

REFERENCE PLAN OF ROAD DEDICATION OVER PART OF LOT C, DISTRICT LOTS 937 AND 2610, PLAN 30007; AND OVER PART OF LOT 1, DISTRICT LOT 937, PLAN 22864, BOTH OF CARIBOO DISTRICT.

Pursuant to Section 107 of the Land Title Act. BCGS 93G.097

PLAN NO. BCP 40229

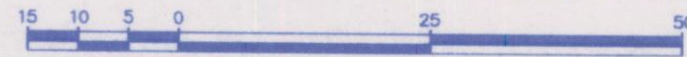
Deposited in the Land Title Office at New Westminster this 10 day of MARCH 2009

REGISTRAR

REF. # BB 761194

Note: This plan shows horizontal ground-level distances except where otherwise noted. To compute grid distances, multiply ground-level distances by combined factor 0.9995098

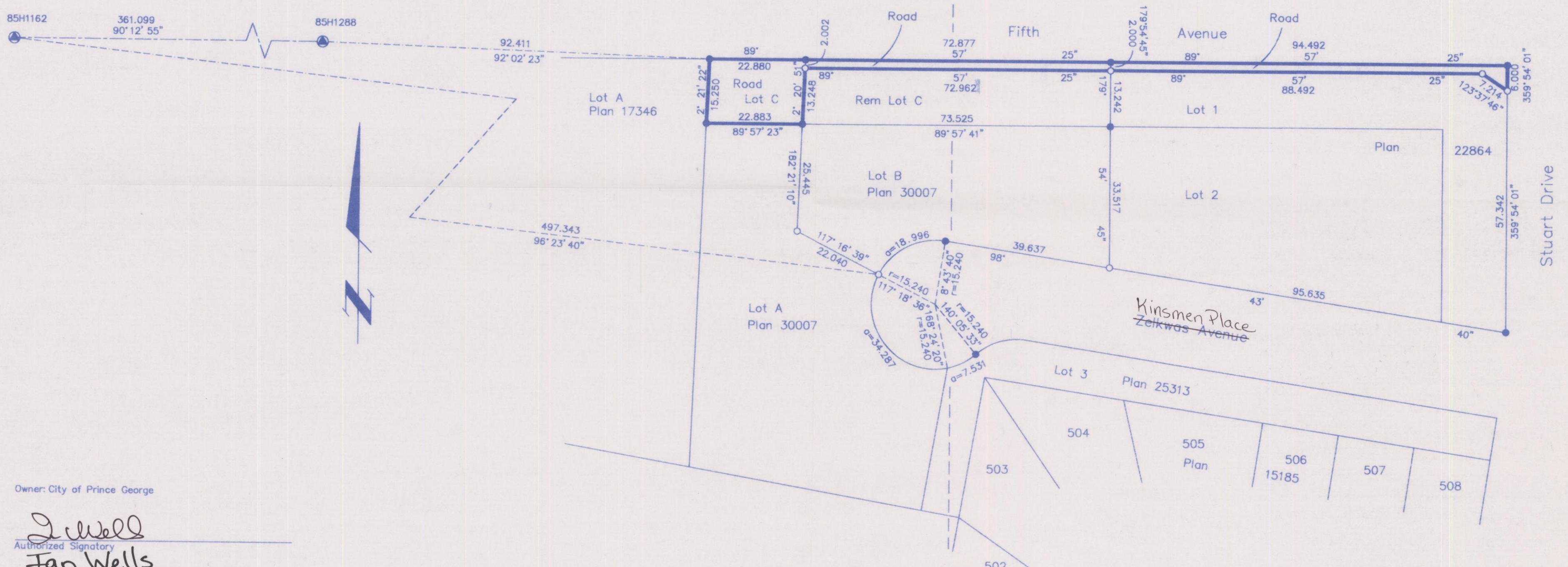
Scale: 1 : 750 (Distances are in metres)



LEGEND

- Standard Iron Post Found
- Standard Iron Post Placed
- ⊙ Control Monument Found

Grid bearings are derived from observations between control monuments 85H1288 and 85H1162 integrated survey area number 39, City of Prince George, B.C. NAD83(CSRS)



Owner: City of Prince George

Authorized Signatory: *Jan Wells*
Print Name: Jan Wells

Authorized Signatory

Witness to: *Brenda Sieben*
Print Name: Brenda Sieben

Address: 1100 Patricia Boulevard
Prince George, BC V2L 3V9
Property Administrator

I, Gordon Kilbride, a British Columbia Land Surveyor, of Prince George, in British Columbia, certify that I was present at and personally superintended the survey represented by this plan, and that the survey and plan are correct. The field survey was completed on the 17 day of February, 2009. The plan was completed and checked, and the checklist filed under # 93358, on the 20 day of February, 2009.

Gordon Kilbride
Gordon Kilbride, B.C.L.S.

Approved under the Land Title Act this 6th day of March, 2009
Dull
Approving Officer
City of Prince George

BOOK OF REFERENCE	
DESCRIPTION	AREA
Lot 1, Plan 22864	201.0 m ²
Lot C, Plan 30007	494.5 m ²

This plan lies within the Fraser-Fort George Regional District.

McElhanney
McElhanney Associates
Land Surveying Ltd.
Prince George, B.C.
Ph: (250) 561-2229 Fax: 563-1941

F.B.- XU61 D.L.- 937 File No. - 5706-1