

PLAN OF SUBDIVISION OF PART OF THE SOUTH 1/2 OF DISTRICT LOT 749, CARIBOO DISTRICT, EXCEPT PLANS A227, 16570, 17144, PGP39661, PGP43431 AND BCP38932 AND PART OF THE NORTH 1/2 OF DISTRICT LOT 749, CARIBOO DISTRICT, EXCEPT PLANS A227, PGP43431 AND BCP38932.

PLAN NO. BCP 39874

Deposited in the Land Title Office at New Westminster this 10 day of February 2009.

Larry Blaschok / se.
REGISTRAR
BB 921635

BCGS 93G.087

Scale: 1 : 2500 (Distances are in metres)



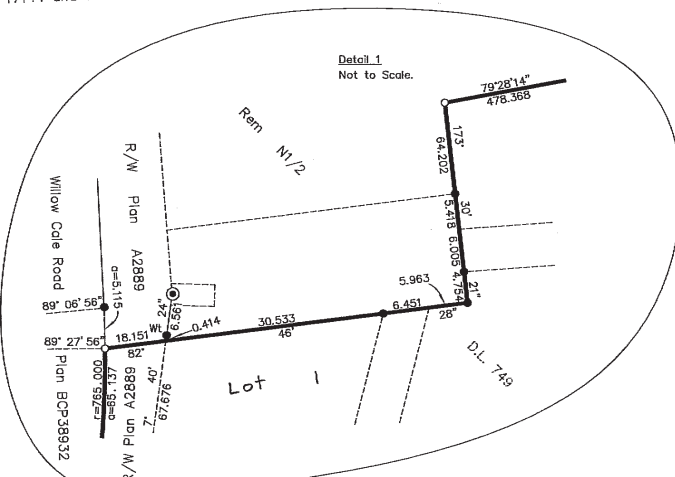
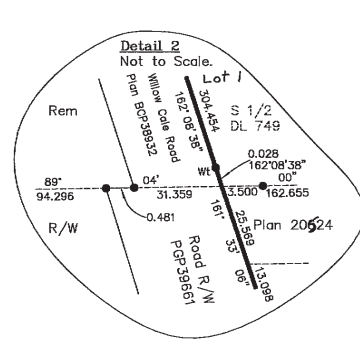
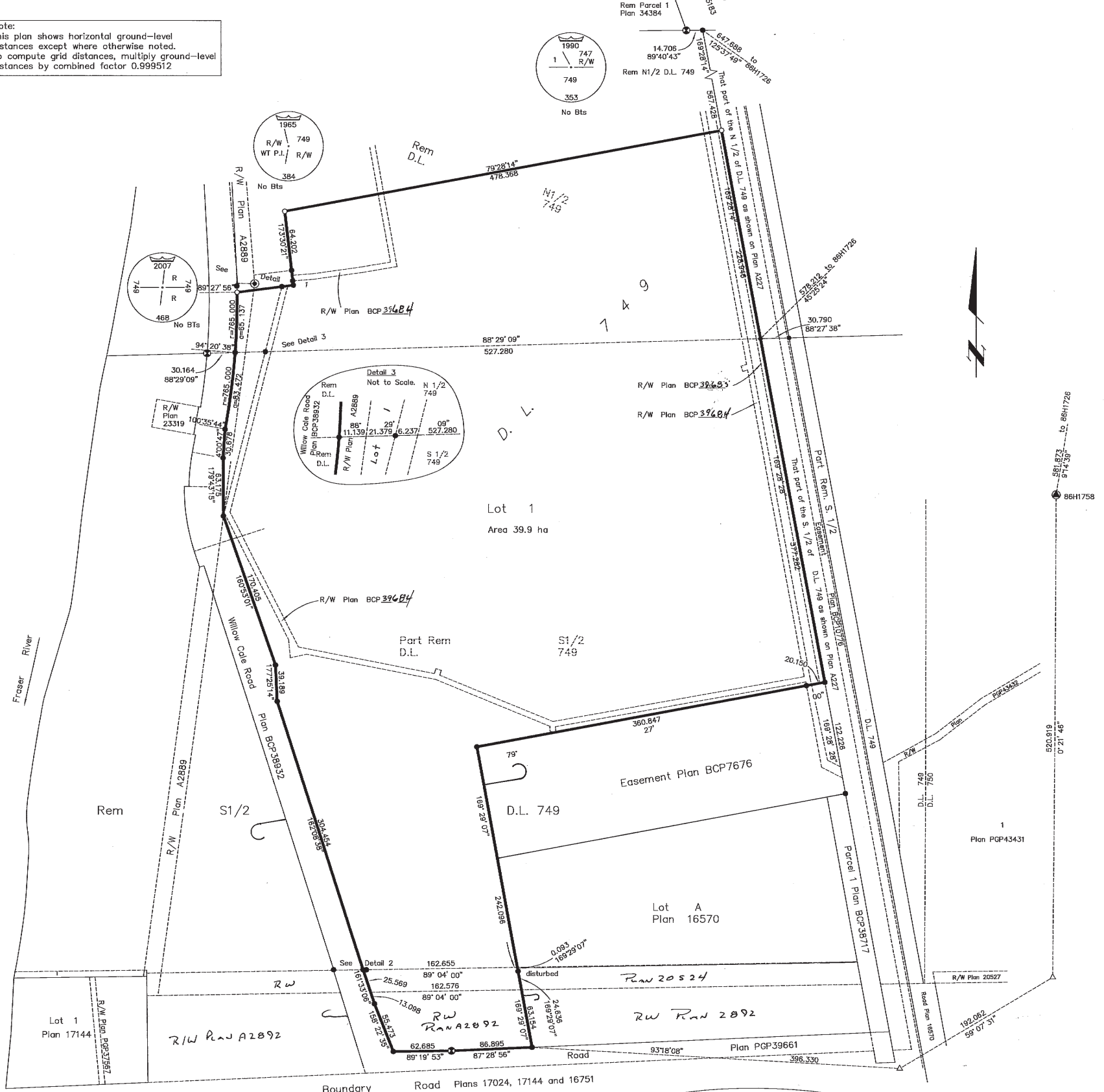
Integrated Survey Area No. 39, City of Prince George NAD83(CSRS).

Grid bearings are derived from observations between geodetic control monuments 86H1758 and 86H1726.

Note:
This plan shows horizontal ground-level distances except where otherwise noted.
To compute grid distances, multiply ground-level distances by combined factor 0.999512

LEGEND

- Standard Concrete Post Found
- Standard Capped Post Found
- Standard Iron Post Found
- Standard Iron Post Placed
- △ Control Monument Found
- △ Traverse Hub Placed



Owner: BCR Properties Ltd.
Inc. No. 278246

John Lusney
Authorized Signatory
Print Name: John Lusney

Authorized Signatory
Print Name:

Chris Dawson
Witness to both
Print Name: Chris Dawson
Address: #600-221 West Esplanade
North Vancouver, BC V7M 3J3
Occupation: Supervisor Surveys and Crossings

Reviewed and verified correct

Chris Dawson
Survey & Crossing Coordinator
BCR Properties Ltd. #88403

Approved under the Land Title Act this 28 day of January 2009

[Signature]
Approving Officer
City of Prince George

I, Dale Keown, a British Columbia Land Surveyor, of Prince George, in British Columbia, certify that I was present at and personally supervised the survey represented by this plan, and that the survey and plan are correct. The field survey was completed on the 31st day of October, 2008. The plan was completed and checked, and the checklist filed under #90291, on the 23rd day of November, 2008.

Dale Keown
Dale Keown, B.C.L.S.

This plan lies within the Regional District of Fraser-Fort George.

McElhanney
McElhanney Associates
Land Surveying Ltd.
Prince George, B.C.
Ph: (250) 562-1196 Fax: 563-1941

F.B.- RA D.L.- 749 File No. -5351-0