

REGISTRAR

Ref: BCP 751207

REFERENCE PLAN OF STATUTORY RIGHT OF WAY WITHIN PARCEL 1, DISTRICT LOTS 745 AND 747, CARIBOO DISTRICT, PLAN 34384, EXCEPT PLANS PGP35183, PGP36014, PGP36015, PGP36075, PGP36481, PGP42972, PGP44172, PGP45387, BCP38027 AND BCP38932; NORTH 1/2 OF DISTRICT LOT 749, CARIBOO DISTRICT, EXCEPT PLANS A227, PGP43431 AND BCP38932 AND SOUTH 1/2 OF DISTRICT LOT 749, CARIBOO DISTRICT, EXCEPT PLANS A227, 16570, 17144, PGP39661, PGP43431 AND BCP38932.

Pursuant to Section 113 of the Land Title Act. BCGS 93G.087

Scale: 1 : 2500 (Distances are in metres)

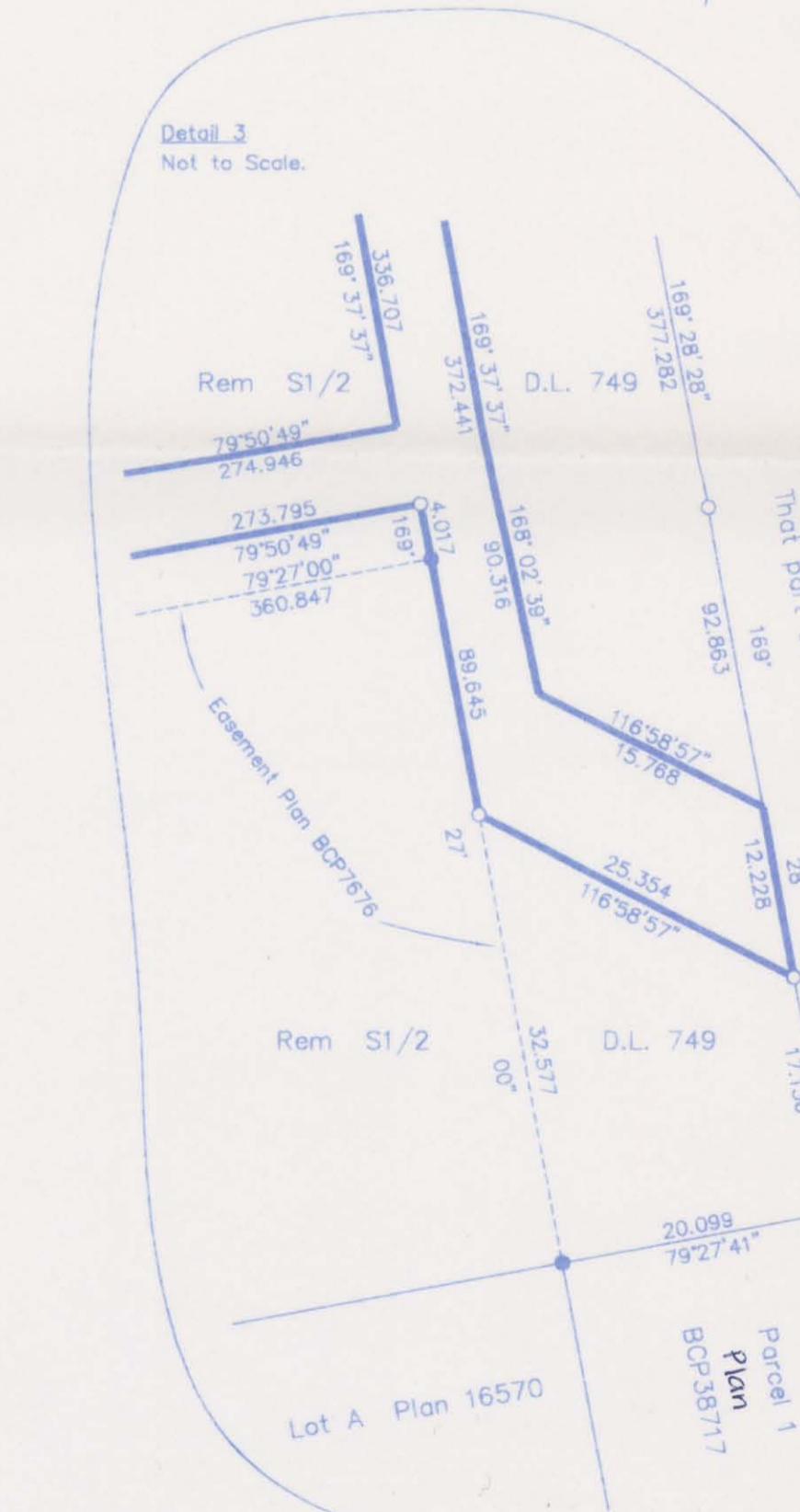
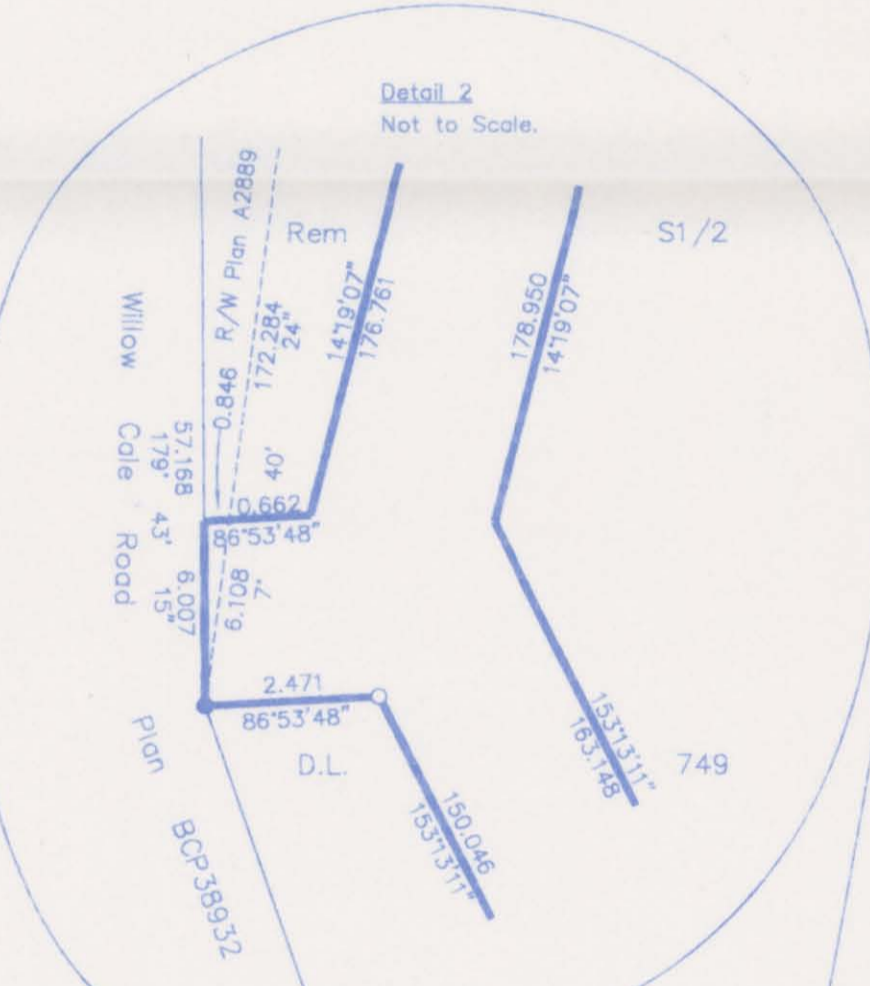
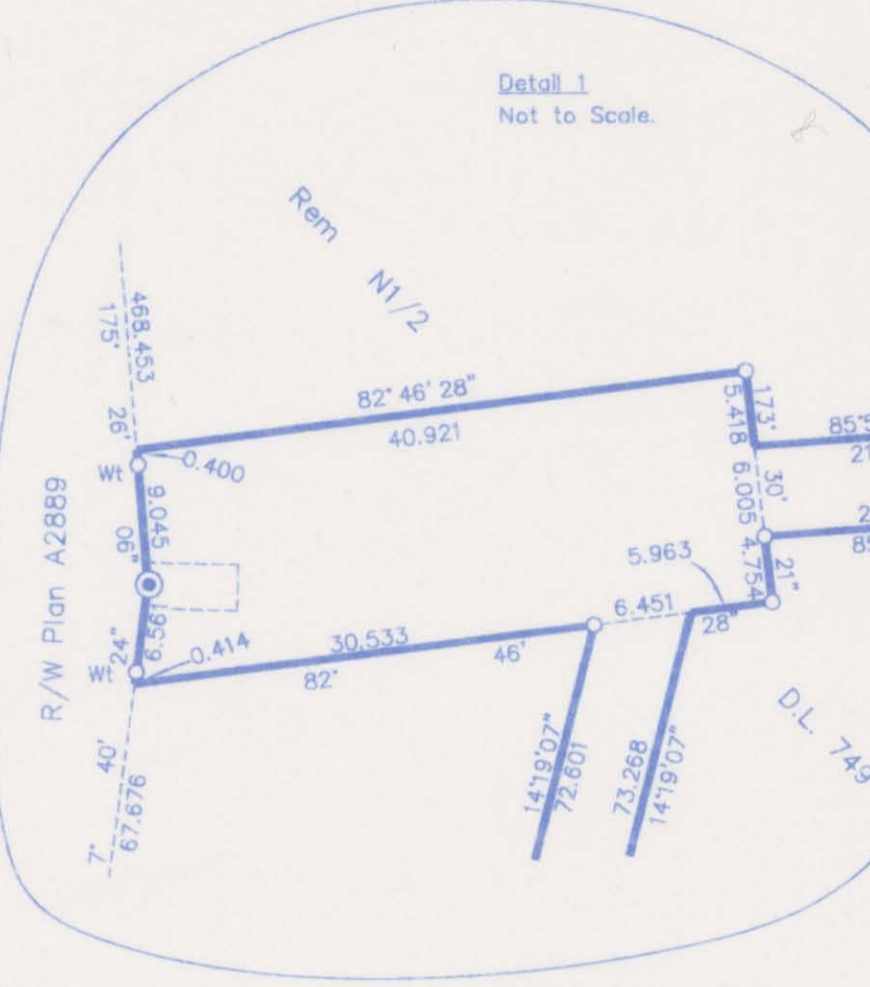
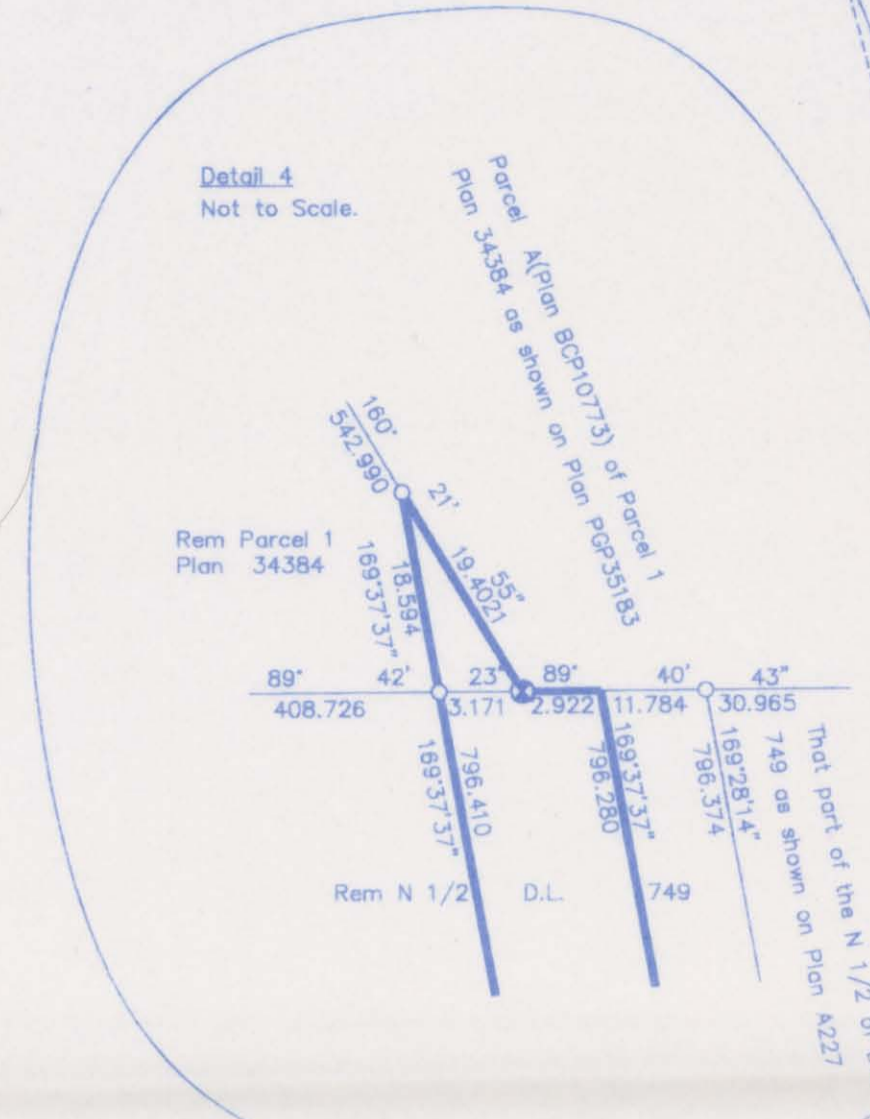
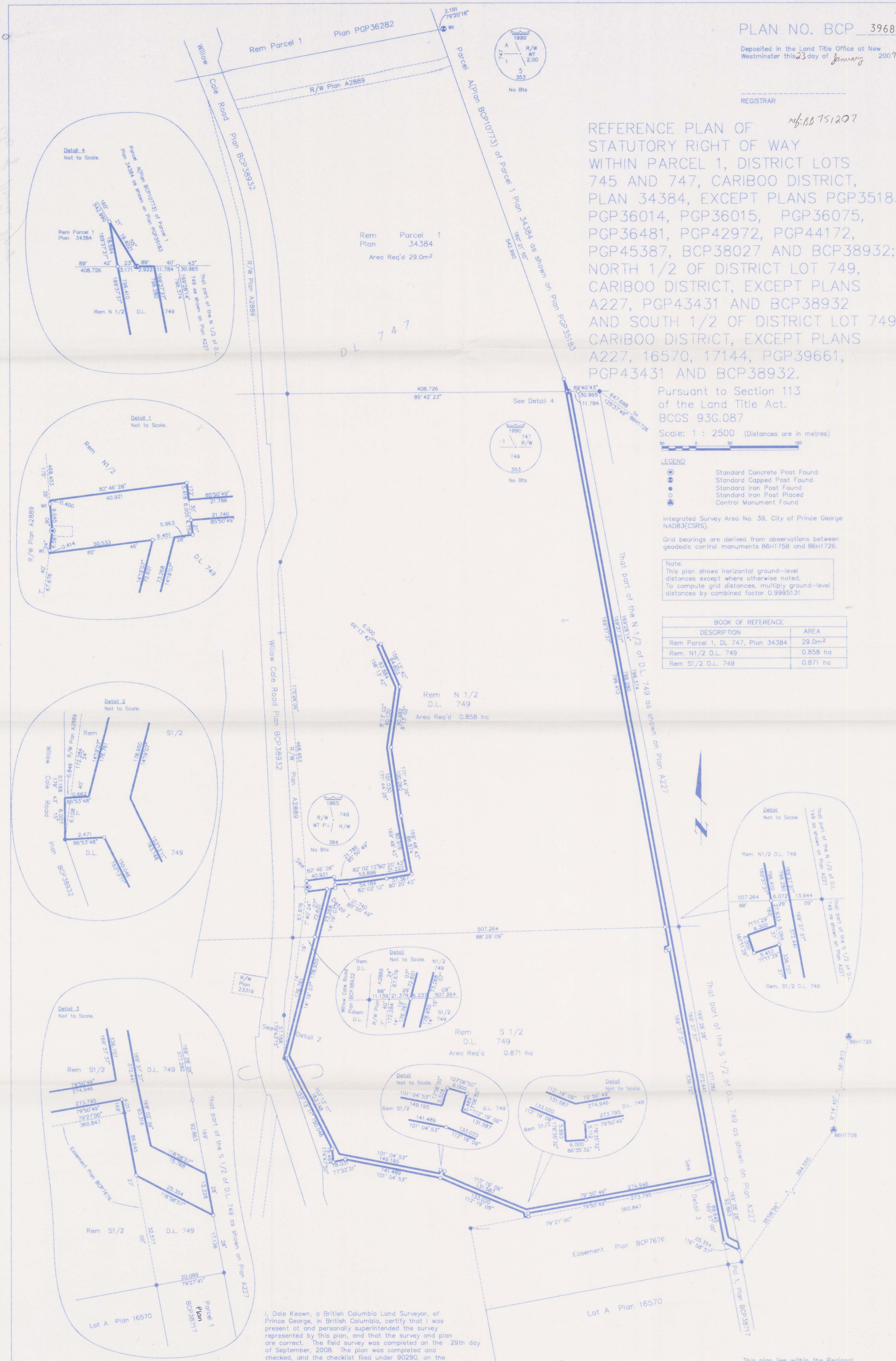
- LEGEND**
- Standard Concrete Post Found
 - Standard Capped Post Found
 - Standard Iron Post Found
 - Control Monument Found

Integrated Survey Area No. 39, City of Prince George NAD83(CSRS).

Grid bearings are derived from observations between geodetic control monuments 86H1758 and 86H1726.

Note: This plan shows horizontal ground-level distances except where otherwise noted. To compute grid distances, multiply ground-level distances by combined factor 0.9995131

BOOK OF REFERENCE	
DESCRIPTION	AREA
Rem Parcel 1, DL 747, Plan 34384	29.0m ²
Rem N1/2 D.L. 749	0.858 ha
Rem S1/2 D.L. 749	0.871 ha



I, Dale Keown, a British Columbia Land Surveyor, of Prince George, in British Columbia, certify that I was present at and personally supervised the survey represented by this plan, and that the survey and plan are correct. The field survey was completed on the 29th day of September, 2008. The plan was completed and checked, and the checklist filed under 90290, on the 24th day of November, 2008.

Dale Keown
Dale Keown, B.C.L.S.

Reviewed and verified correct
CR Dawson
Supervisor Survey and Crossing
BCR Properties Ltd. #88401

This plan lies within the Regional District of Fraser-Fort George.

McElhannay
McElhannay Associates
Land Surveying Ltd.
Prince George, B.C.
Ph: (250) 562-1196 Fax: 563-1941

F.B. - RA	D.L. - 749	File No. - 5442-H
-----------	------------	-------------------