

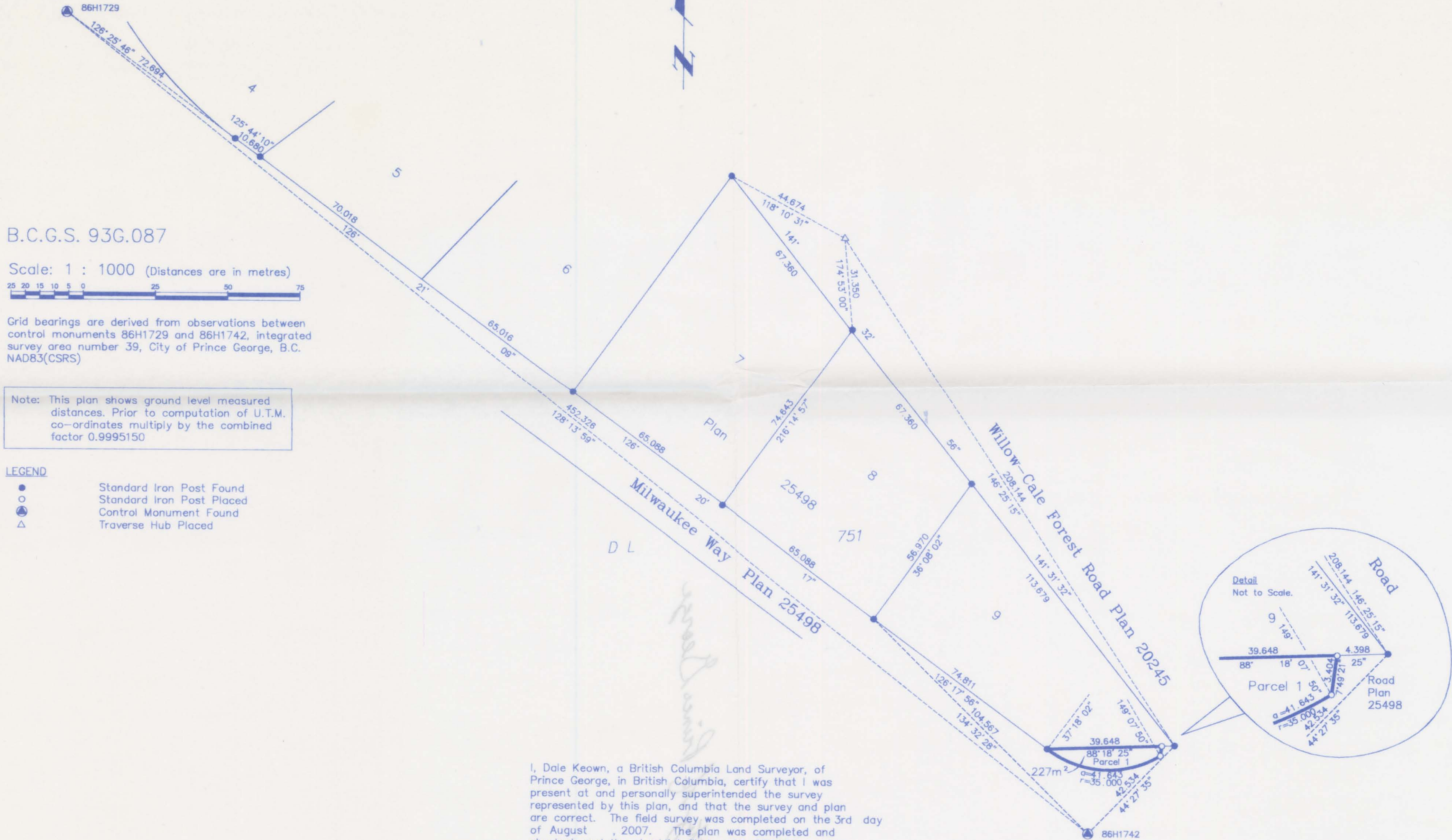
REFERENCE PLAN TO ACCOMPANY CITY OF PRINCE GEORGE
ROAD CLOSURE BYLAW 8067 AND REMOVAL OF HIGHWAY DEDICATION
BY PLAN 25498, ADJACENT TO LOT 9, DISTRICT LOT 751,
CARIBOO DISTRICT, PLAN 25498

PLAN NO. BCP 39099

Deposited in the Land Title Office at New
Westminster this 20 day of NOV 2008.

Pursuant to Section 40 of the Community
Charter and Section 120 of the Land Title Act.

BB 320218
REGISTRAR



B.C.G.S. 93G.087

Scale: 1 : 1000 (Distances are in metres)



Grid bearings are derived from observations between
control monuments 86H1729 and 86H1742, integrated
survey area number 39, City of Prince George, B.C.
NAD83(CSRS)

Note: This plan shows ground level measured
distances. Prior to computation of U.T.M.
co-ordinates multiply by the combined
factor 0.9995150

LEGEND

- Standard Iron Post Found
- Standard Iron Post Placed
- ⊙ Control Monument Found
- △ Traverse Hub Placed

I, Dale Keown, a British Columbia Land Surveyor, of
Prince George, in British Columbia, certify that I was
present at and personally superintended the survey
represented by this plan, and that the survey and plan
are correct. The field survey was completed on the 3rd day
of August, 2007. The plan was completed and
checked, and the checklist filed under #70694, on the
20th day of September, 2007.

Dale Keown
Dale Keown, B.C.L.S.

This plan lies within the Fraser-Fort
George Regional District.

McElhanney
McElhanney Associates
Land Surveying Ltd.
Prince George, B.C.
Ph: (250) 561-2229 Fax: 563-1941

F.B.- HH9-21 | D.L.- 751 | File No. - 5542-BL