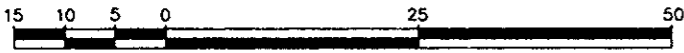


PLAN OF SUBDIVISION OF
CLOSED LANE, PLAN 18279 AND
LOTS 24 TO 28, BLOCK 59, PLAN 1268,
DISTRICT LOT 343, CARIBOO DISTRICT.
B.C.G.S. 93G.097

PLAN NO. BCP 03891

Deposited in the Land Title Office at New
Westminster this 26 day of Feb 2003.

Scale: 1 : 750 (Distances are in metres)



Grid bearings are derived from observations between control monuments 85H1299 and 85H1067, integrated survey area number 39, City of Prince George, B.C. NAD83(CSRS)

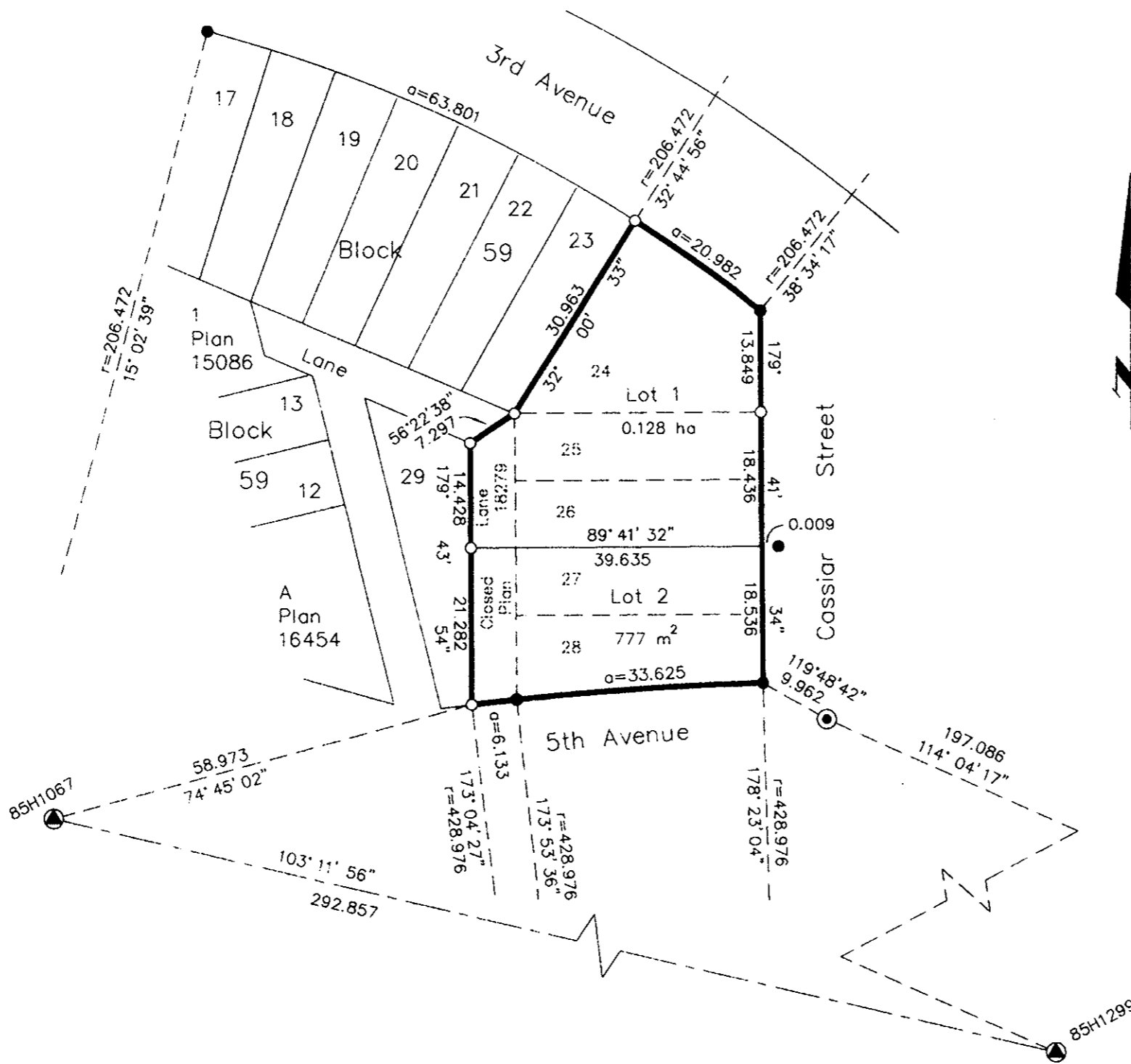
Note: This plan shows ground level measured distances. Prior to computation of U.T.M. co-ordinates multiply by the combined factor 0.9995139

REGISTRAR

DV 68263

LEGEND

- Standard Concrete Post Found
- Standard Iron Post Found
- Standard Iron Post Placed
- ▲ Control Monument Found



Owner: NORTH AMERICAN BAPTISTS INC., (CANADA)

Edgar L. Hoffman
Authorized Signatory
EDGAR L. HOFFMAN
Print Name

Authorized Signatory
Print Name

Joyce M. Kells
Witness to both
JOYCE M. KELLS
Print Name

1 SOUTH 210 SUMMIT AVE.
Address
CARIBOO TERRACE, IL 0181
Postal Code

ADMINISTRATIVE ASSISTANT
Occupation

I, Gordon Kilbride, a British Columbia Land Surveyor of Prince George in British Columbia, certify that I was present at and personally superintended the survey represented by this plan and that the survey and plan are correct. The survey was completed on the 25th day of October, 2000.

Gordon Kilbride
Gordon Kilbride, B.C.L.S.

Approved under the Land Title Act this 19th day of
February, 2003
[Signature]
Approving Officer
City of Prince George

This plan lies within the Fraser-Fort
George Regional District.

KILBRIDE LAND SURVEYING LTD.
British Columbia Land Surveyors
Prince George, B.C.
Ph: (250) 562-1196 Fax: 562-3656

F.B.- WL23 D.L.- 343(59) File No. - 000 1965