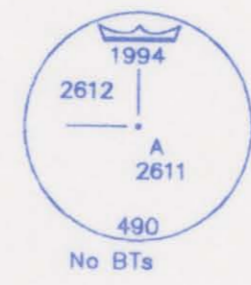


REGISTRAR

Bb721319

Rem. D. L. 2612

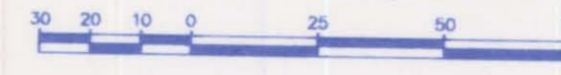


REFERENCE PLAN OF STATUTORY RIGHT OF WAY WITHIN LOT A, DISTRICT LOTS 2611, 2612, 2615 AND 2616, CARIBOO DISTRICT, PLAN PGP39723

Pursuant to Section 113 of the Land Title Act.

BCGS 93G.096

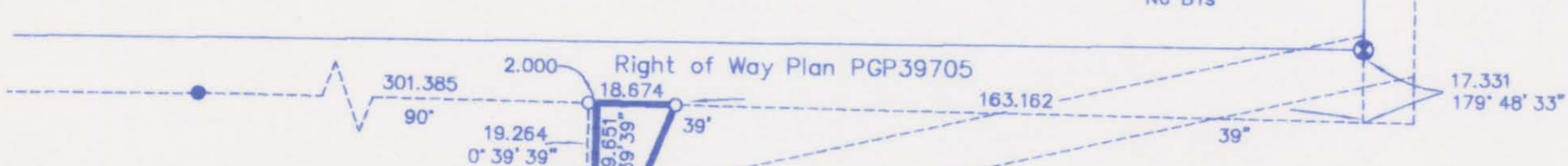
Scale: 1 : 1500 (Distances are in metres)



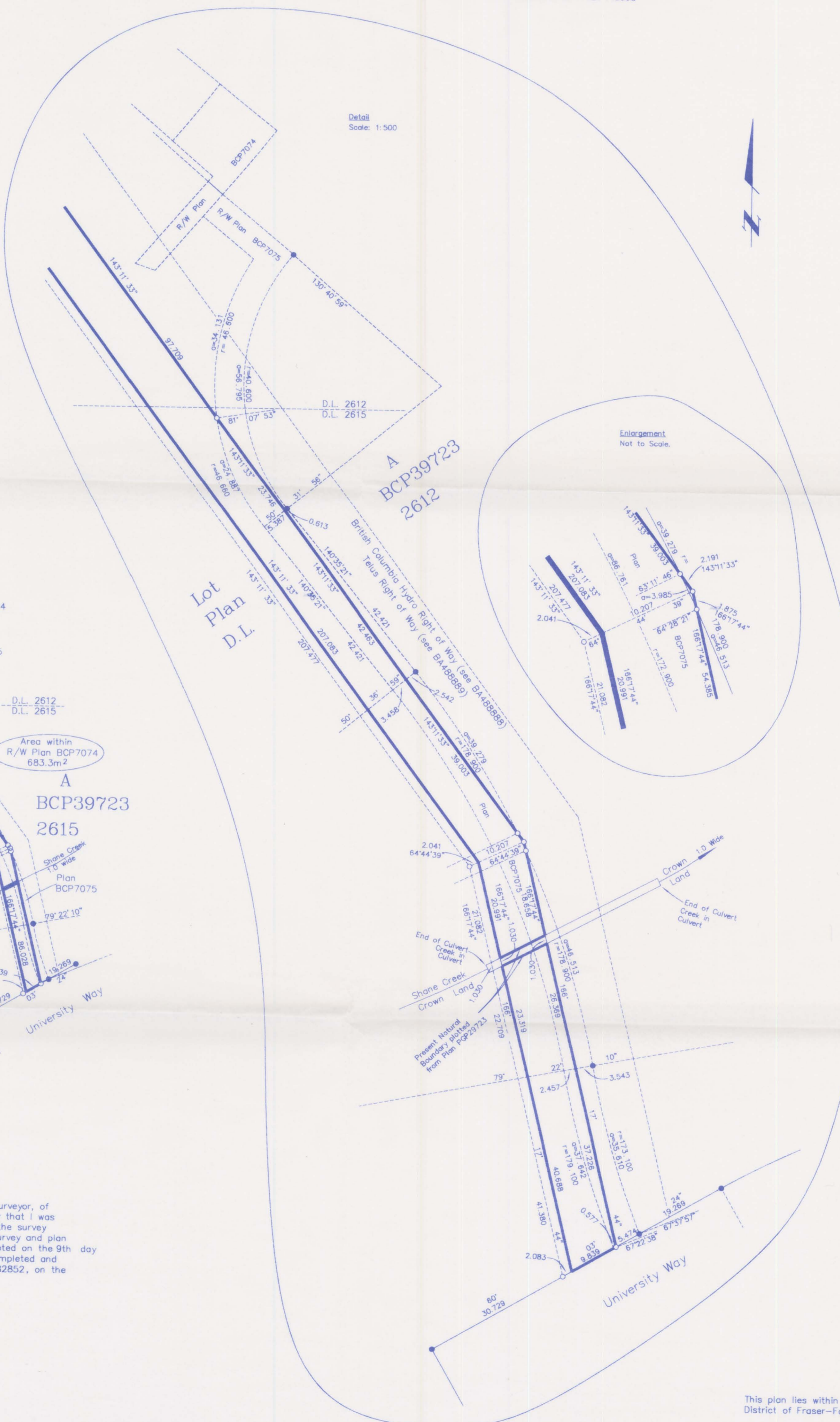
Bearings are astronomic, derived from PGP39723

LEGEND

- Standard Capped Post Found
- Standard Iron Post Found
- Standard Iron Post Placed



NOTE Iron Pins set at 2.0m o/s line



Detail Scale: 1:500

Enlargement Not to Scale.

Area 0.813ha
Lot Plan D.L. A BCP39723 2612

NOTE Iron Pins set at 2.0m o/s line

Area within R/W Plan BCP7074 683.3m²
Lot Plan D.L. A BCP39723 2615

NOTE Iron Pins set at 2.0m o/s line

I, Dale Keown, a British Columbia Land Surveyor, of Prince George, in British Columbia, certify that I was present at and personally superintended the survey represented by this plan, and that the survey and plan are correct. The field survey was completed on the 9th day of June, 2008. The plan was completed and checked, and the checklist filed under #82852, on the 20th day of June, 2008.

Dale Keown
Dale Keown, B.C.L.S.

This plan lies within the Regional District of Fraser-Fort George.

McElhanney Associates
Land Surveying Ltd.
Prince George, B.C.
Ph: (250) 562-1196 Fax: 563-1941

F.B.- RA	D.L.- 2612	File No. - 5652-0RW
----------	------------	---------------------