

REFERENCE PLAN OF STATUTORY  
RIGHT OF WAY OVER PART OF  
LOT 1, DISTRICT LOT 1574,  
CARIBOO DISTRICT, PLAN BCP 33956

PLAN NO. BCP 38237

Deposited in the Land Title Office at New  
Westminster this 18 day of SEPTEMBER 2008

Pursuant to Section 113 of the  
Land Title Act.

REGISTRAR

BB 1007621

B.C.G.S. 93G.097

Scale: 1 : 1000 (Distances are in metres)

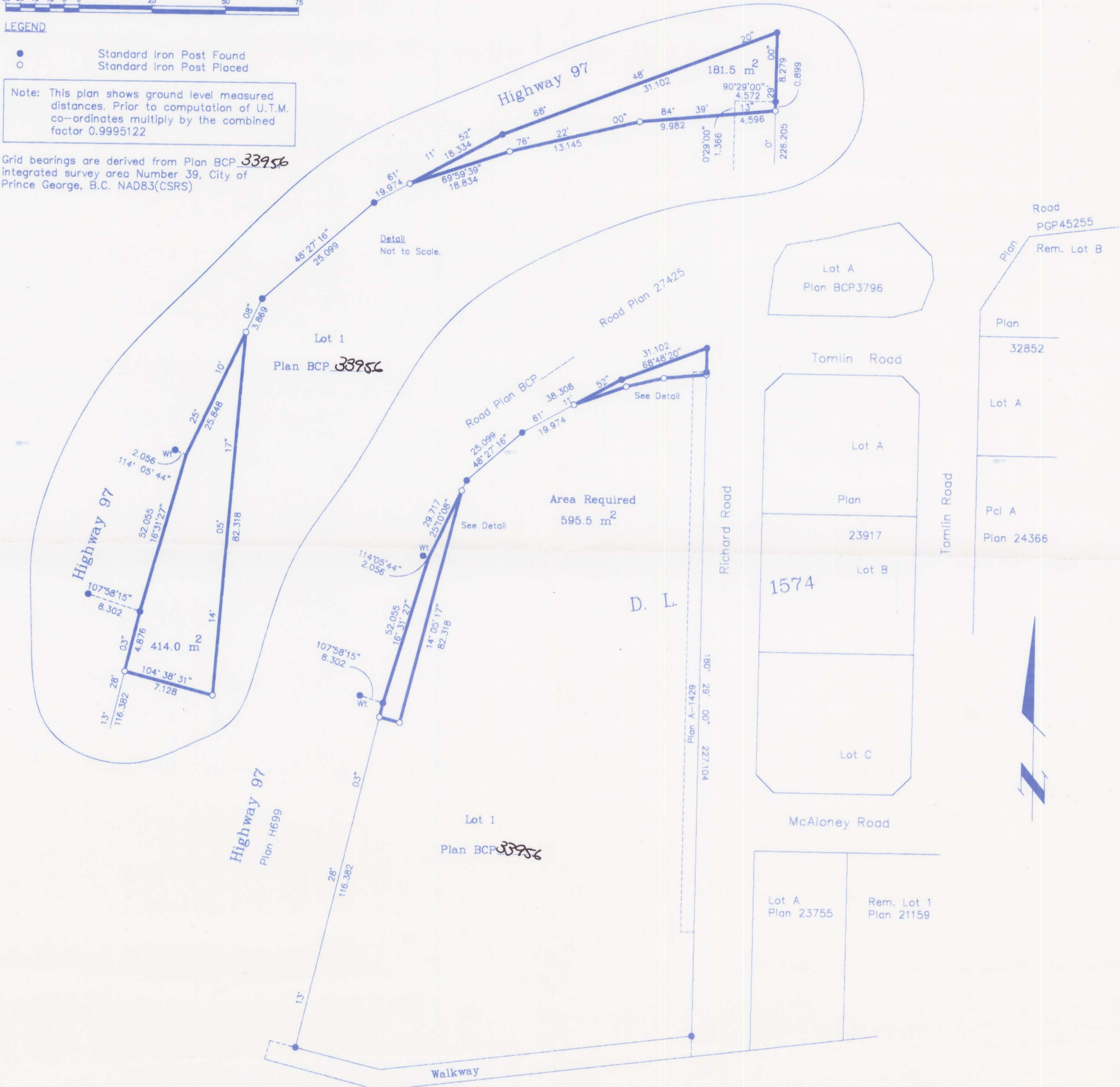


LEGEND

- Standard Iron Post Found
- Standard Iron Post Placed

Note: This plan shows ground level measured distances. Prior to computation of U.T.M. co-ordinates multiply by the combined factor 0.9995122

Grid bearings are derived from Plan BCP 33956 integrated survey area Number 39, City of Prince George, B.C. NAD83(CSRS)



I, Gordon Kilbride, a British Columbia Land Surveyor, of Prince George, in British Columbia, certify that I was present at and personally superintended the survey represented by this plan, and that the survey and plan are correct. The field survey was completed on the 30th day of October, 2007. The plan was completed and checked, and the checklist filed under #72757, on the 3rd day of November, 2007.

*Gordon Kilbride*  
Gordon Kilbride, B.C.L.S.

NECHAKO RIVER

This plan lies within the Regional District of Fraser - Fort George.

**McElhanney**  
McElhanney Associates  
Land Surveying Ltd.  
Prince George, B.C.  
Ph: (250) 561-2229 Fax: 563-1941

F.B.- RA	D.L.- 1574	File No. - 5462X170
----------	------------	---------------------