

REFERENCE PLAN OF STATUTORY RIGHT OF WAY OVER PART OF PARCEL F (PLAN BCP10773) OF PART OF DISTRICT LOT 485, AS SHOWN ON PLAN 32913; PART OF PARCEL D (PLAN BCP10773) OF PART OF PARCEL 1, DISTRICT LOT 745, PLAN 34384 AS SHOWN ON PLAN PGP35183; PARCEL E (PLAN BCP10773) OF PART PARCEL 1, DISTRICT LOT 745, PLAN 34384 AS SHOWN ON PLAN PGP35183; PART OF THAT PART OF DISTRICT LOT 485 AS SHOWN ON PLAN PGP35183; PART OF LOTS 3 AND 4, DISTRICT LOT 485, PLAN BCP 38207; PART OF LOT 2, DISTRICT LOTS 485 AND 745, PLAN BCP 38207, ALL WITHIN CARIBOO DISTRICT.

Pursuant to Section 113 of the Land Title Act.

B.C.G.S. 93G.087

Scale: 1 : 1250 (Distances are in metres)



LEGEND

- Standard Capped Post Found
- Standard Iron Post Found
- Standard Iron Post Placed
- Control Monument Found
- Traverse Hub Found
- NSP Not Suitable for Posting - Rail Yard

Grid bearings are derived from observations between control monuments PR#2 and 86H1733, integrated survey area number 39, City of Prince George, B.C. NAD83(CSRS)

Note: This plan shows ground level measured distances. Prior to computation of U.T.M. co-ordinates multiply by the combined factor 0.9995128

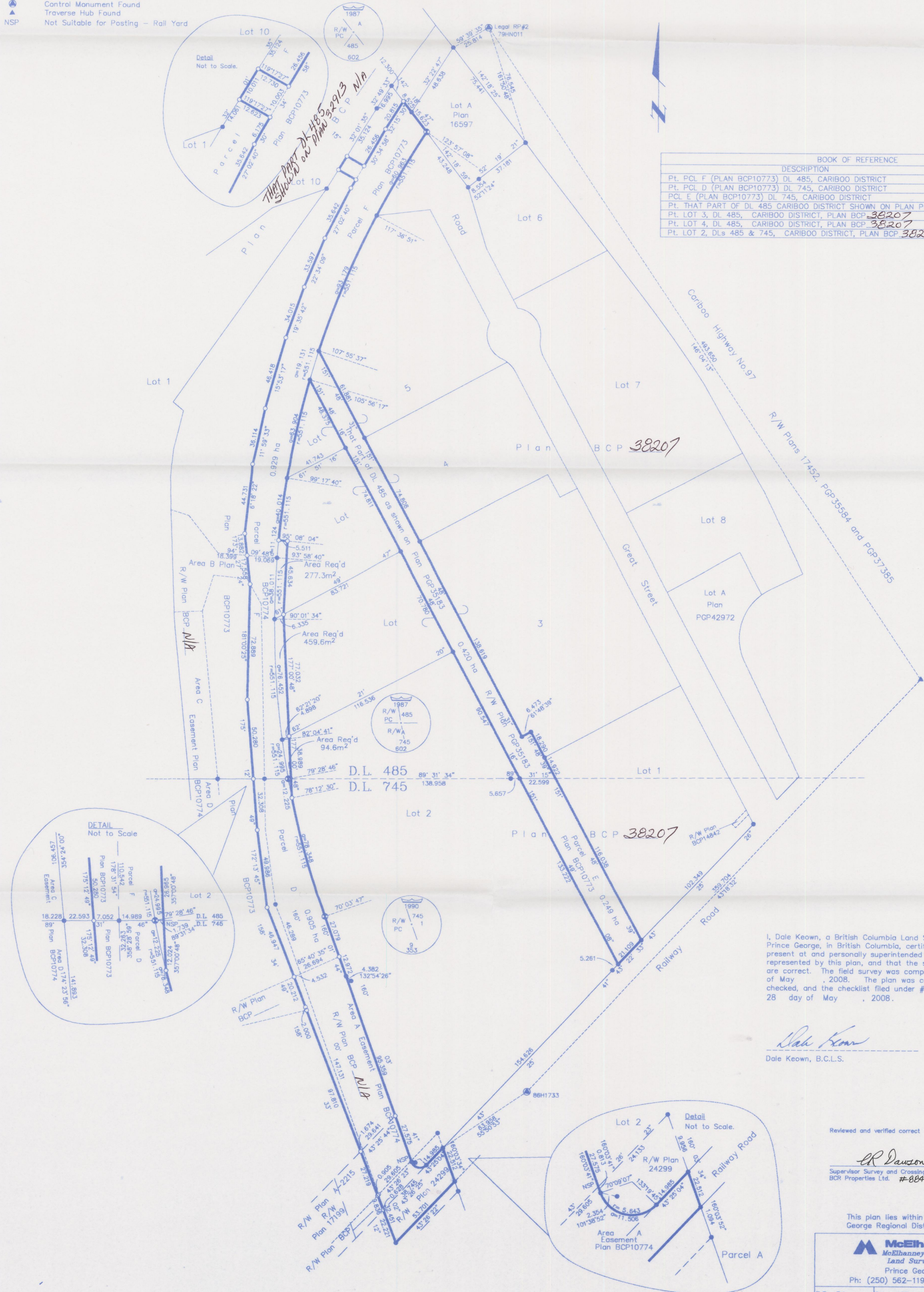
PLAN NO. BCP38208

Deposited in the Land Title Office at New Westminster this 17 day of SEPT. 2008

REGISTRAR

REF. # BB1007160

BOOK OF REFERENCE	
DESCRIPTION	AREA
Pt. PCL F (PLAN BCP10773) DL 485, CARIBOO DISTRICT	0.929 ha
Pt. PCL D (PLAN BCP10773) DL 745, CARIBOO DISTRICT	0.905 ha
PCL E (PLAN BCP10773) DL 745, CARIBOO DISTRICT	0.249 ha
Pt. THAT PART OF DL 485 CARIBOO DISTRICT SHOWN ON PLAN PGP35183	0.420 ha
Pt. LOT 3, DL 485, CARIBOO DISTRICT, PLAN BCP 38207	459.6m <sup>2</sup>
Pt. LOT 4, DL 485, CARIBOO DISTRICT, PLAN BCP 38207	277.3m <sup>2</sup>
Pt. LOT 2, DLs 485 & 745, CARIBOO DISTRICT, PLAN BCP 38207	94.6m <sup>2</sup>



I, Dale Keown, a British Columbia Land Surveyor, of Prince George, in British Columbia, certify that I was present at and personally superintended the survey represented by this plan, and that the survey and plan are correct. The field survey was completed on the 8th day of May, 2008. The plan was completed and checked, and the checklist filed under #81671, on the 28 day of May, 2008.

Dale Keown  
Dale Keown, B.C.L.S.

Reviewed and verified correct

CR Dawson  
Supervisor Survey and Crossing  
BCR Properties Ltd. #88471

This plan lies within the Fraser-Fort George Regional District.

McElhanney  
McElhanney Associates  
Land Surveying Ltd.  
Prince George, B.C.  
Ph: (250) 562-1196 Fax: 563-1941

F.B.- RA D.L.- 485 File No. - 5345-RW1