

PLAN OF SUBDIVISION OF
 LOTS 1, 2 AND 3, DISTRICT LOT 1574
 CARIBOO DISTRICT, PLAN 6890,
 EXCEPT PLAN 27425.
 B.C.G.S. 93G.097

PLAN NO. BCP 03190

Deposited in the Land Title Office at New Westminster this 19 day of Feb, 2003.

Scale: 1 : 1000 (Distances are in metres)



Grid bearings are derived from observations between control monuments 86H1738 and 86H1745, integrated survey area number 39, City of Prince George, B.C. NAD83(CSRS)

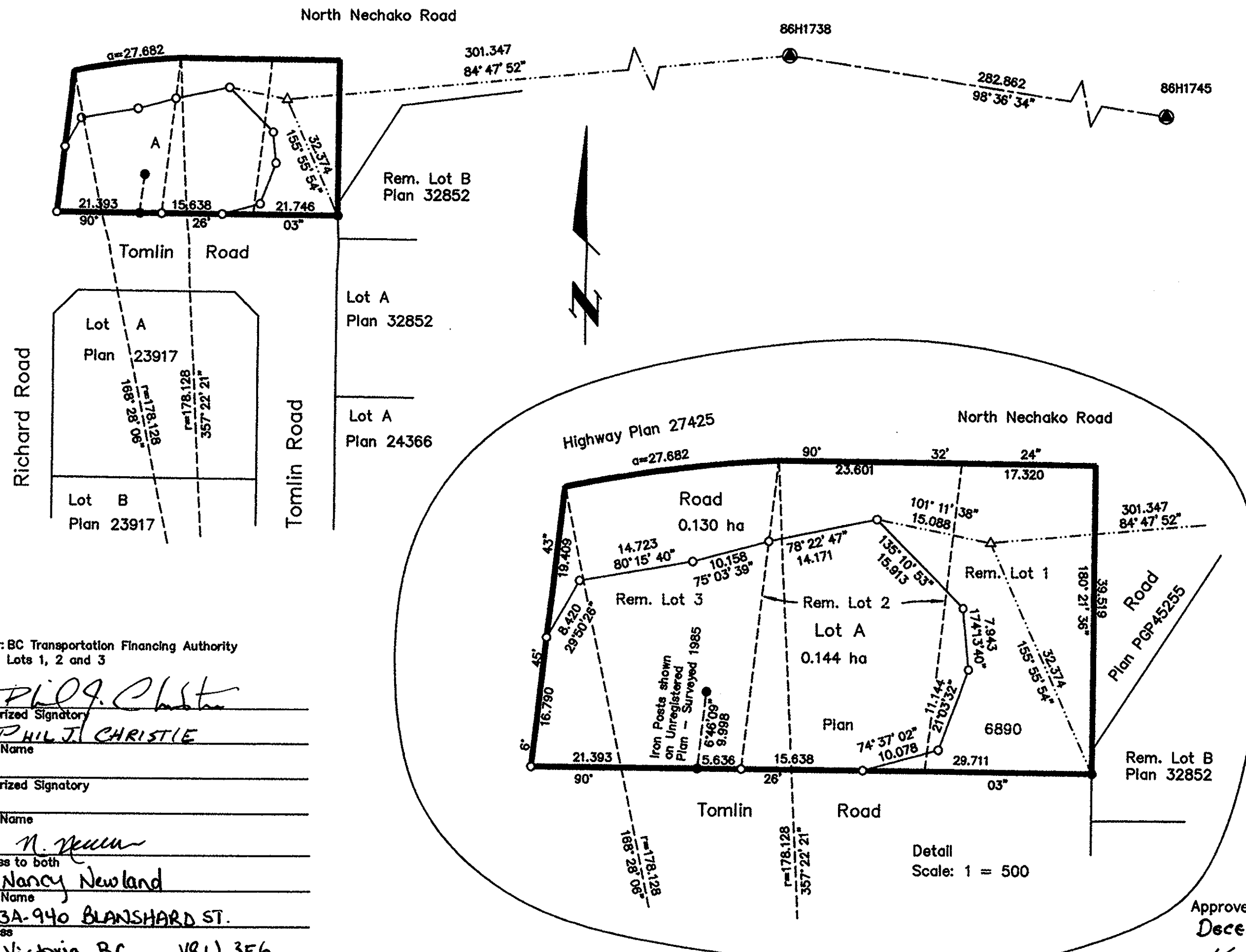
Note: This plan shows ground level measured distances. Prior to computation of U.T.M. co-ordinates multiply by the combined factor 0.9995122

LEGEND

- Standard Iron Post Found
- Standard Iron Post Placed
- ⊙ Control Monument Found
- △ Traverse Hub Placed

REGISTRAR

BV57311



I, Gordon Kilbride, a British Columbia Land Surveyor, of Prince George, in British Columbia, certify that I was present at and personally superintended the survey represented by this plan, and that the survey and plan are correct. The survey was completed on the 30 day of July, 2001.

Gordon Kilbride
 Gordon Kilbride, B.C.L.S.

Approved under the Land Title Act this 31st day of December, 2002

M. G. Blair
 Approving Officer
 Ministry of Transportation

Owner: BC Transportation Financing Authority
 Lots 1, 2 and 3

Phil J. Christie
 Authorized Signatory
 PHIL J. CHRISTIE
 Print Name

Authorized Signatory

Print Name

N. Newland
 Witness to both
 NANCY NEWLAND
 Print Name
 3A-940 BLANSHARD ST.
 Address
 Victoria BC. V8W 3E6
 Postal Code
 Property Administrator
 Occupation

Approved under the Land Title Act this 10th day of December, 2002.

This plan lies within the Fraser-Fort George Regional District.

Reapproved February 18th 2003
Gros Filip
 Approving Officer
 City of Prince George

| | | | |
|------------------|-----------|-----------|------------------|
| S41964 Item 2 | F.B. WK71 | D.L. 1574 | File No. 010121B |
|------------------|-----------|-----------|------------------|

KILBRIDE LAND SURVEYING LTD.
 British Columbia Land Surveyors
 Prince George, B.C.
 Ph: (250) 562-1196 Fax: 562-3656