

REFERENCE PLAN OF COVENANT AREAS ON DISTRICT LOT 1544, CARIBOO DISTRICT, EXCEPT PLANS 8840, 9868, 14163, 15115 AND 16904.

Pursuant to Section 99(1)(e) of the Land Title Act.
B.C.G.S. 93G.087

PLAN NO. BCP* 000364

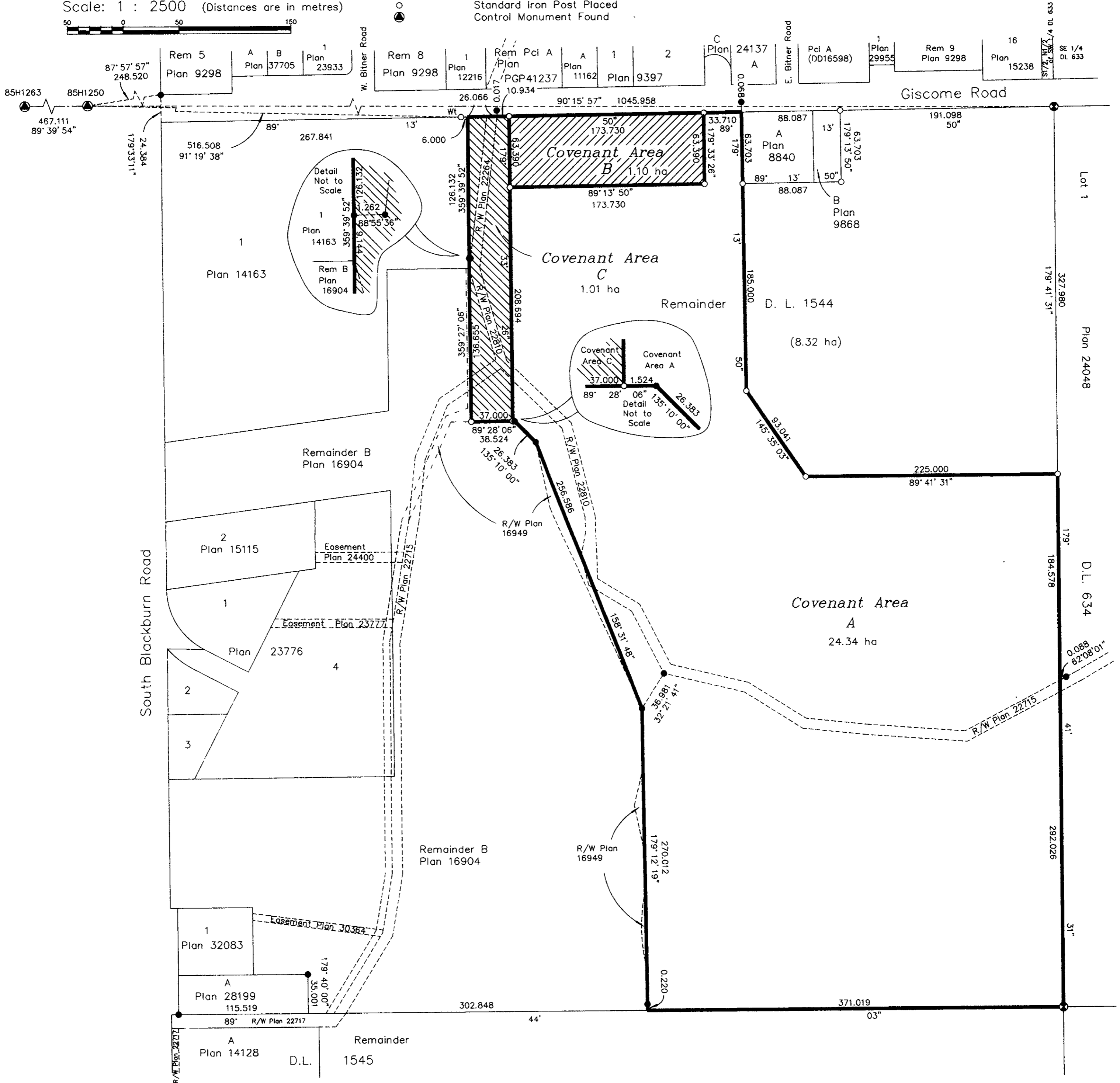
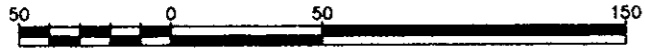
Deposited in the Land Title Office at New Westminister this 22 day of JULY, 2002.

REGISTRAR SEE BT 262498

Scale: 1 : 2500 (Distances are in metres)

LEGEND

- Standard Capped Post Found
- Standard Iron Post Found
- Standard Iron Post Placed
- ⊙ Control Monument Found



Note: This plan shows ground level measured distances. Prior to computation of U.T.M. co-ordinates multiply by the combined factor 0.9995020

I, Gordon Kilbride, a British Columbia Land Surveyor, of Prince George, in British Columbia, certify that I was present at and personally superintended the survey represented by this plan, and that the survey and plan are correct. The survey was completed on the 18th day of June, 2002.

This plan lies within the Fraser-Fort George Regional District.

Grid bearings are derived from observations between control monuments 85H1263 and 85H1250, integrated survey area number 39, City of Prince George, B.C. NAD83(CSRS)

Gordon Kilbride
Gordon Kilbride, B.C.L.S.

KILBRIDE LAND SURVEYING LTD.
British Columbia Land Surveyors
Prince George, B.C.
Ph: (250) 562-1196 Fax: 562-3656

F.B. W063 | D.L. 1544 | File No. 020092C