


EXPLANATORY PLAN OF STATUTORY RIGHT OF WAY OVER PART OF LOTS 4 & 5, DISTRICT LOT 905, CARIBOO DISTRICT, PLAN BCP 36182.

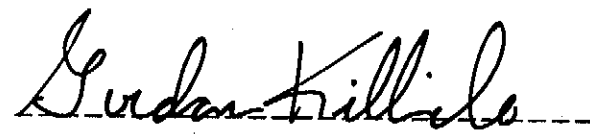
Pursuant to Section 113. of the Land Title Act. B.C.G.S. 93G.087

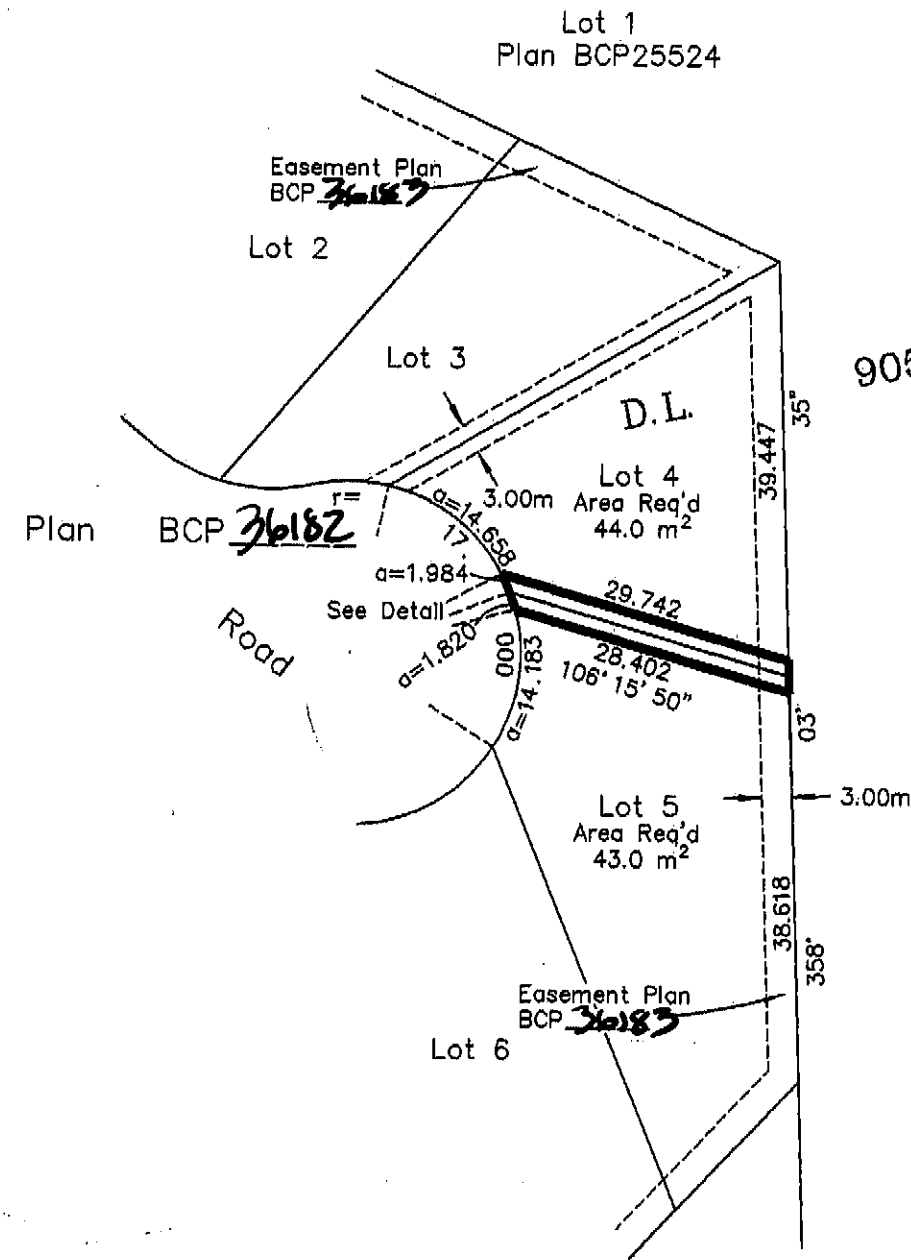
Scale: 1 : 750 (Distances are in metres)


Grid bearings are derived from Plan BCP 36182 integrated survey area number 39, City of Prince George, B.C. NAD83(CSRS)

Note: This plan shows ground level measured distances. Prior to computation of U.T.M. co-ordinates multiply by the combined factor 0.999504.

Certified Correct, according to Land Title Office Records. This 31st day of July, 2007. The plan was completed and checked, and the checklist filed under #73931, on the 27th day of November, 2007.

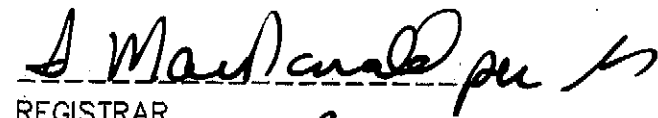

 Gordon Kilbride, B.C.L.S.

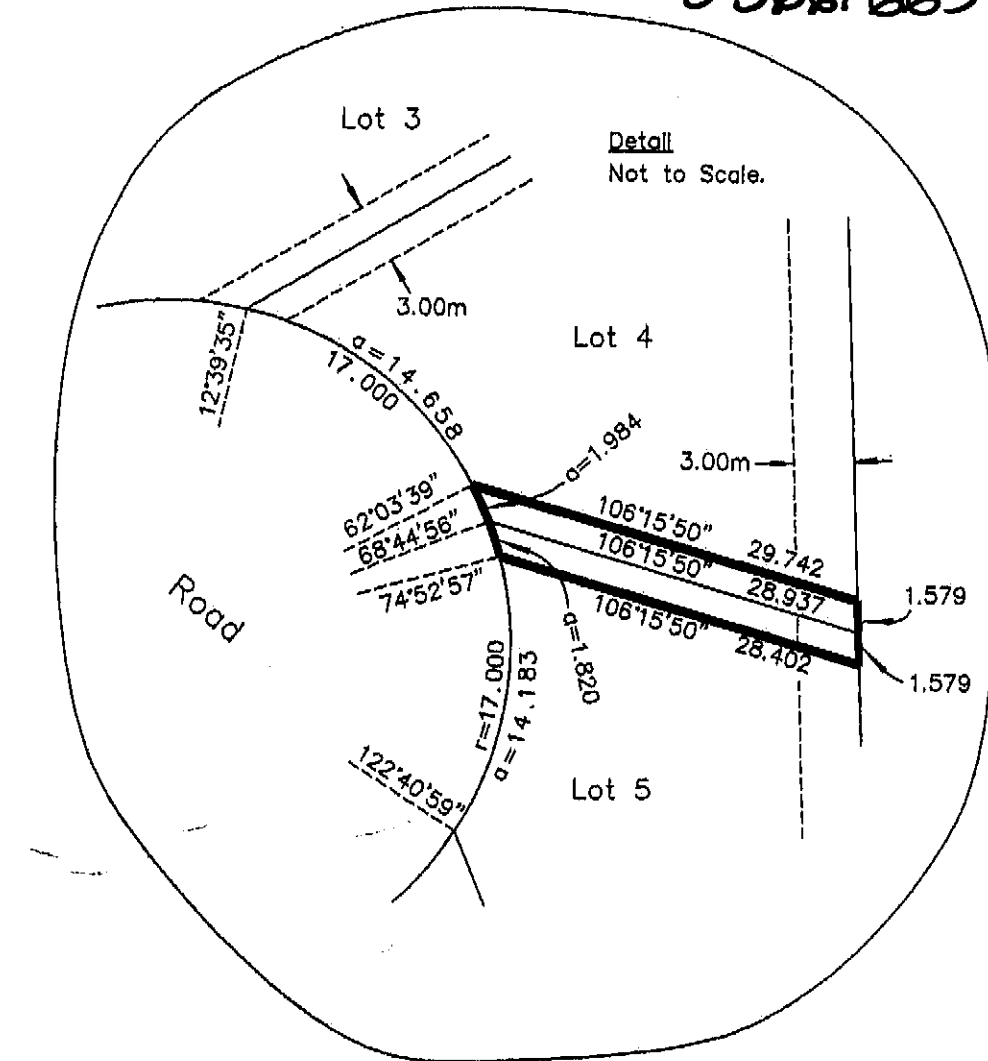


BOOK OF REFERENCE	
DESCRIPTION	AREA
Lot 4, Plan BCP <u>36182</u>	44.0m ²
Lot 5, Plan BCP <u>36182</u>	43.0m ²


PLAN NO. BCP 36184

Deposited in the Land Title Office at New Westminster this 7 day of May 2008.


 REGISTRAR BB661665



This plan lies within the Fraser-Fort George Regional District.

 **McElhanney**
 McElhanney Associates
 Land Surveying Ltd.
 Prince George, B.C.
 Ph: (250) 562-1196 Fax: 563-1941

F.B.-	D.L.- 905	File No. - 5389-5E
-------	-----------	--------------------

EXPLANATORY PLAN OF STATUTORY RIGHT OF WAY OVER
PART OF LOTS 4 & 5, DISTRICT LOT 905,
CARIBOO DISTRICT, PLAN BCP 36182.

Pursuant to Section 113.
of the Land Title Act.

B.C.G.S. 93G.087

Scale: 1 : 750 (Distances are in metres)



Grid bearings are derived from Plan BCP 36182,
integrated survey area number 39,
City of Prince George, B.C. NAD83(CSRS)

Note: This plan shows ground level measured
distances. Prior to computation of U.T.M.
co-ordinates multiply by the combined
factor 0.999504.

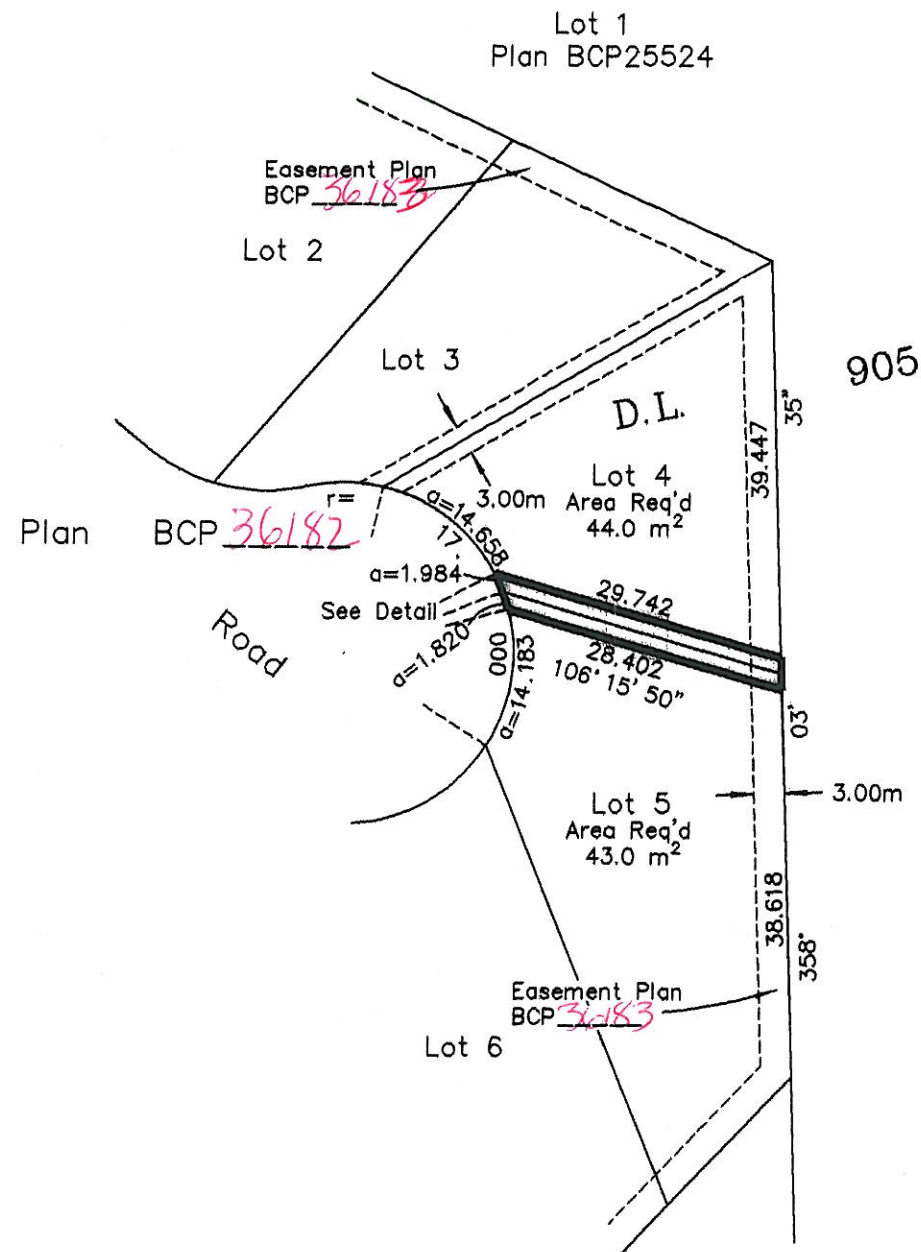


Certified Correct, according to Land Title
Office Records.

This 31st day of July, 2007.

The plan was completed and checked, and
the checklist filed under #73931, on the
27th day of November, 2007.

Gordon Kilbride
Gordon Kilbride, B.C.L.S.

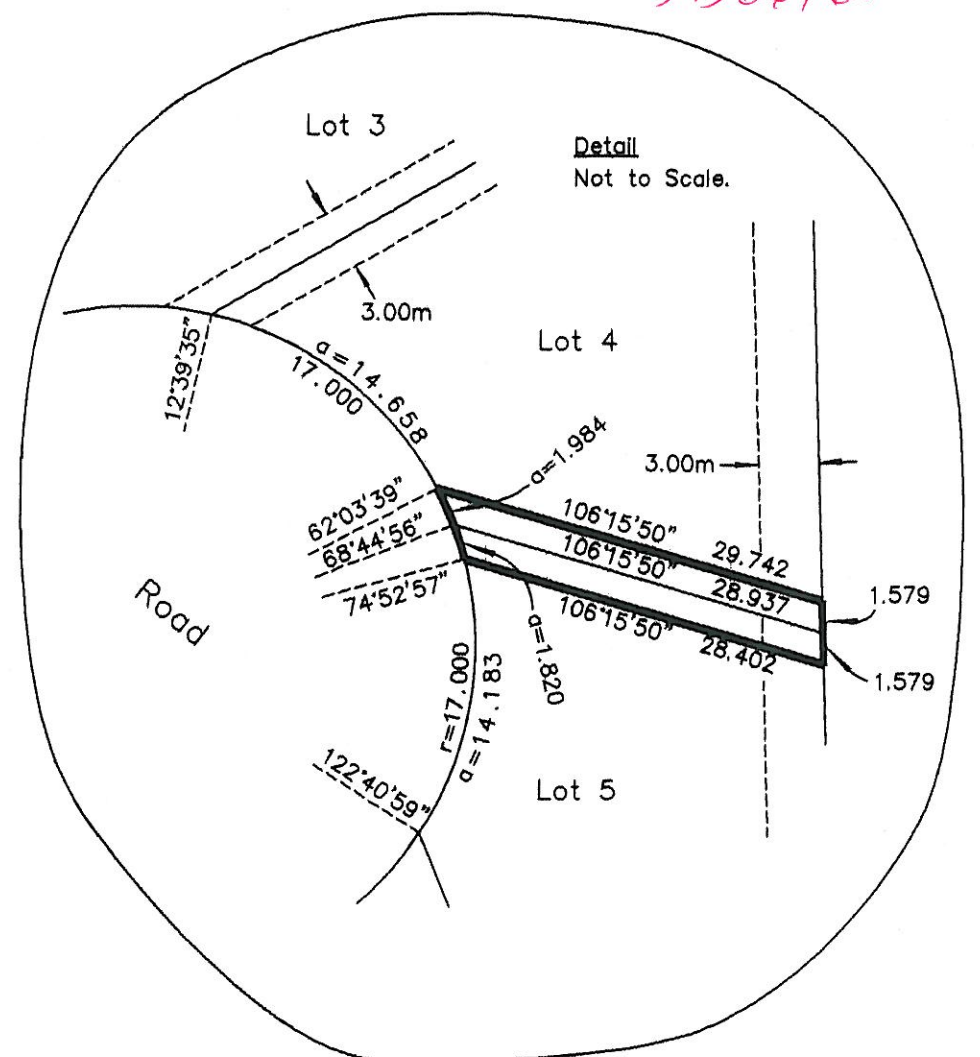


BOOK OF REFERENCE	
DESCRIPTION	AREA
Lot 4, Plan BCP <u>36182</u> ,	44.0m ²
Lot 5, Plan BCP <u>36182</u> ,	43.0m ²

PLAN NO. BCP 36184

Deposited in the Land Title Office at New
Westminster this 7 day of May 2008.

J. Macdonald
REGISTRAR
BB661665



This plan lies within the Fraser-Fort
George Regional District.

McElhanney
McElhanney Associates
Land Surveying Ltd.
Prince George, B.C.

Ph: (250) 562-1196 Fax: 563-1941

F.B.- D.L.- 905 File No. -5389-5E