

Remainder  
Parcel A  
Plan 902  
D.L. 629

PLAN NO. BCP 03615

Deposited in the Land Title Office at New  
Westminster this 5 day of FEB, 2003.

BY 3385

REGISTRAR

PLAN OF  
SUBDIVISION OF PART  
OF DISTRICT LOT 628,  
CARIBOO DISTRICT.

Pursuant to Section 99(1)(h)  
of the Land Title Act  
B.C.G.S. 93G.087

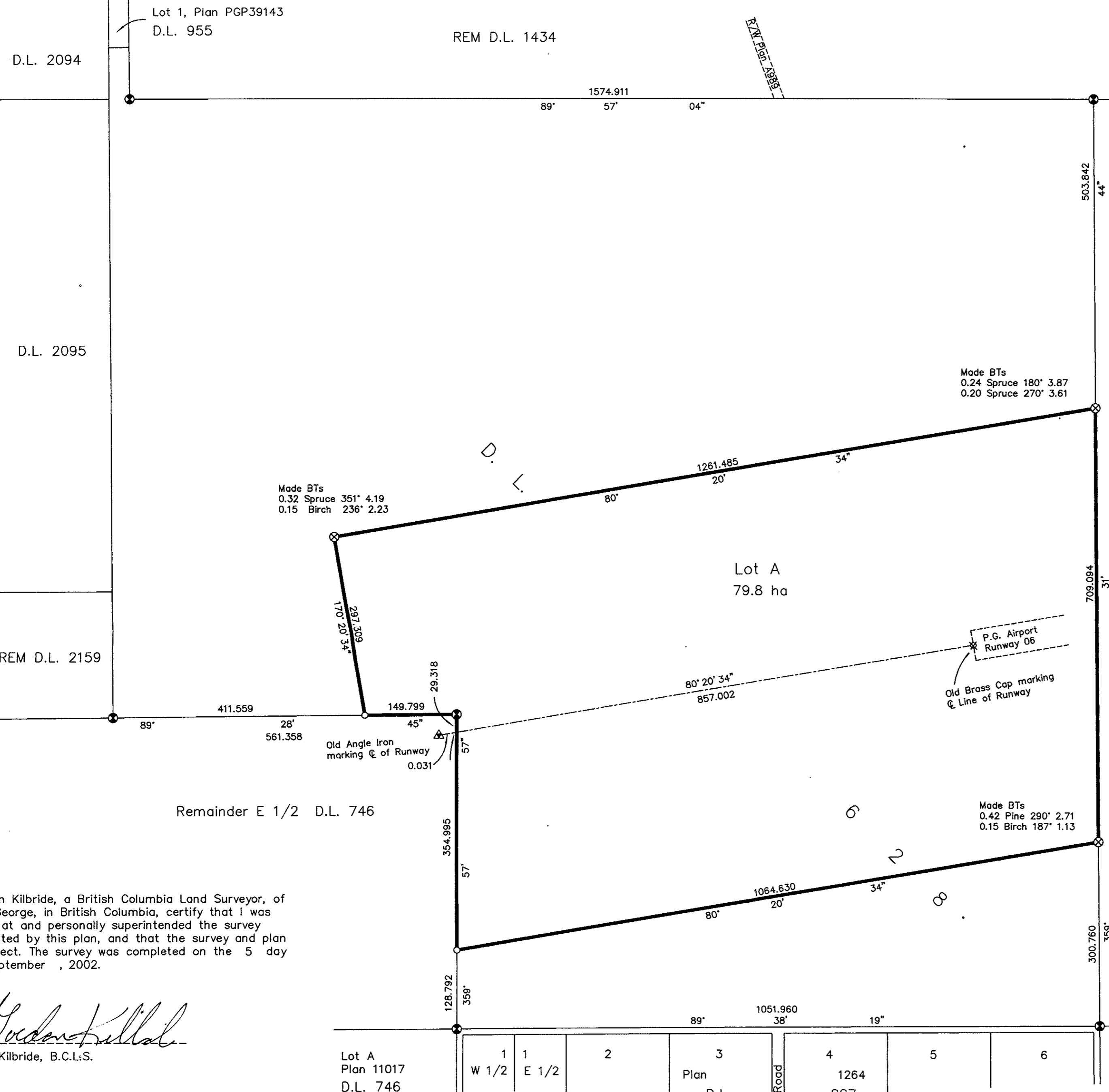
Scale: 1: 5000 (Distances are in metres)



Bearings are astronomic, derived from  
Plan PGP36222 = 359°31'44"  
Bearings to BTs are magnetic

LEGEND

- ⊙ Standard Capped Post Found
- ⊗ Standard Capped Post Placed
- Standard Iron Post Found
- Standard Iron Post Placed
- △ Angle Iron Found



I, Gordon Kilbride, a British Columbia Land Surveyor, of  
Prince George, in British Columbia, certify that I was  
present at and personally superintended the survey  
represented by this plan, and that the survey and plan  
are correct. The survey was completed on the 5 day  
of September, 2002.

*Gordon Kilbride*  
Gordon Kilbride, B.C.L.S.

This plan lies within the Fraser-Fort  
George Regional District.

**KILBRIDE LAND SURVEYING LTD.**  
British Columbia Land Surveyors  
Prince George, B.C.  
Ph: (250) 562-1196 Fax: 562-3656

F.B. WL 67 | D.L. 628 | File No. 020140

Lot A Plan 11017 D.L. 746	1 W 1/2	1 E 1/2	2	3 Plan D.L.	Road	4 1264 887	5	6	NW 1/4 D.L. 627
---------------------------------	------------	------------	---	-------------------	------	------------------	---	---	--------------------

I hereby certify that this is the  
Official Plan of the lands shown  
outlined hereon.

ORIGINAL SIGNED BY  
**JIM SUTHERLAND**  
FOR  
Surveyor General  
Victoria, B.C. **DEC. 16, 2002**

FILE # 7407967  
SID 804111 BC 3054