

REFERENCE PLAN OF  
 LOT 21, EXCEPT PART SUBDIVIDED  
 BY PLAN BCP27961, DISTRICT LOT 482,  
 CARIBOO DISTRICT, PLAN BCP23670.

PLAN NO. BCP 35975

Deposited in the Land Title Office at New  
 Westminster this day of 200 .

Pursuant to Section 100(1)(a)  
 of the Land Title Act.

B.C.G.S. 93G.097

Scale: 1 : 500 (Distances are in metres)

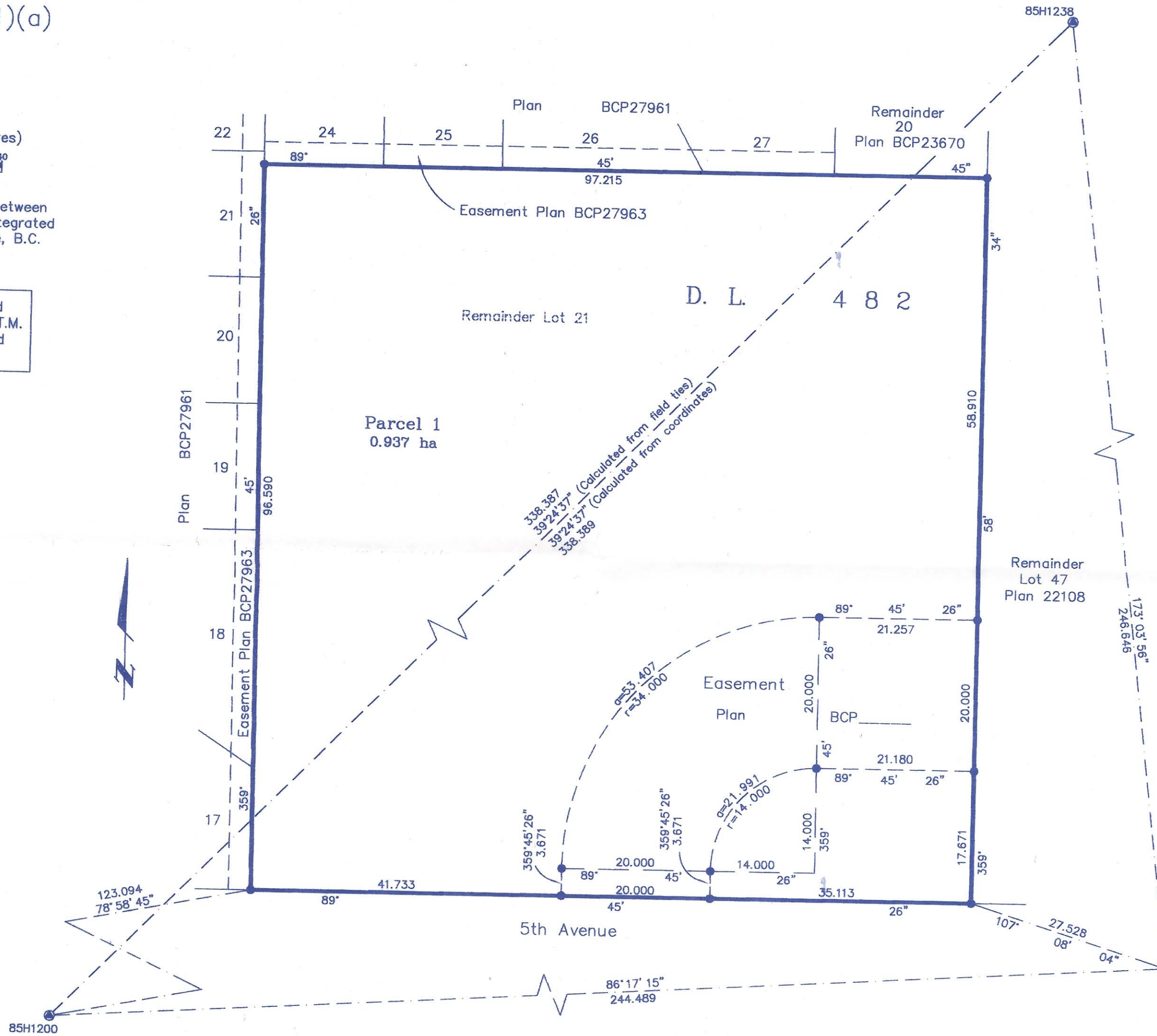


Grid bearings are derived from observations between  
 control monuments 85H1200 and 85H1238, integrated  
 survey area number 39, City of Prince George, B.C.  
 NAD83(CSRS)

Note: This plan shows ground level measured  
 distances. Prior to computation of U.T.M.  
 co-ordinates multiply by the combined  
 factor 0.9995092

LEGEND

- Standard Iron Post Found
- Standard Iron Post Placed
- ⊙ Control Monument Found
- △ Traverse Hub Placed



REGISTRAR

Owner: Hayer Homes Ltd. Inc. No. 281313

*[Signature]*  
 Authorized Signatory  
 ROOP HAYER  
 Print Name

Authorized Signatory  
 Print Name

*[Signature]*  
 Witness to both  
 WILLIAM VAN DELFT  
 Print Name  
 210-760 VICTORIA ST.  
 Address  
 PR. GEORGE BC V2L 2K6  
 Postal Code  
 LAWYER  
 Occupation

I, Gordon Kilbride, a British Columbia Land Surveyor, of  
 Prince George, in British Columbia, certify that I was  
 present at and personally superintended the survey  
 represented by this plan, and that the survey and plan  
 are correct. The field survey was completed on the 18th day  
 of June, 2007. The plan was completed and  
 checked, and the checklist filed under # 79067, on the  
 2 day of April, 2008.

*[Signature]*  
 Gordon Kilbride, B.C.L.S.

This plan lies within the Fraser-Fort  
 George Regional District.

**McElhanney**  
 McElhanney Associates  
 Land Surveying Ltd.  
 Prince George, B.C.  
 Ph: (250) 562-1196 Fax: 563-1941

F.B.-	D.L.- 482	File No. - 5523RT
-------	-----------	-------------------