

REFERENCE PLAN OF EASEMENT
 OVER PART OF LOT 21, EXCEPT PART SUBDIVIDED
 BY PLAN BCP27961, DISTRICT LOT 482,
 CARIBOO DISTRICT, PLAN BCP23670.

PLAN NO. BCP 35974

Deposited in the Land Title Office at New
 Westminster this 24 day of APRIL 2008

Pursuant to Section 99(1)(e)
 of the Land Title Act.

B.C.G.S. 93G.097

Scale: 1 : 500 (Distances are in metres)

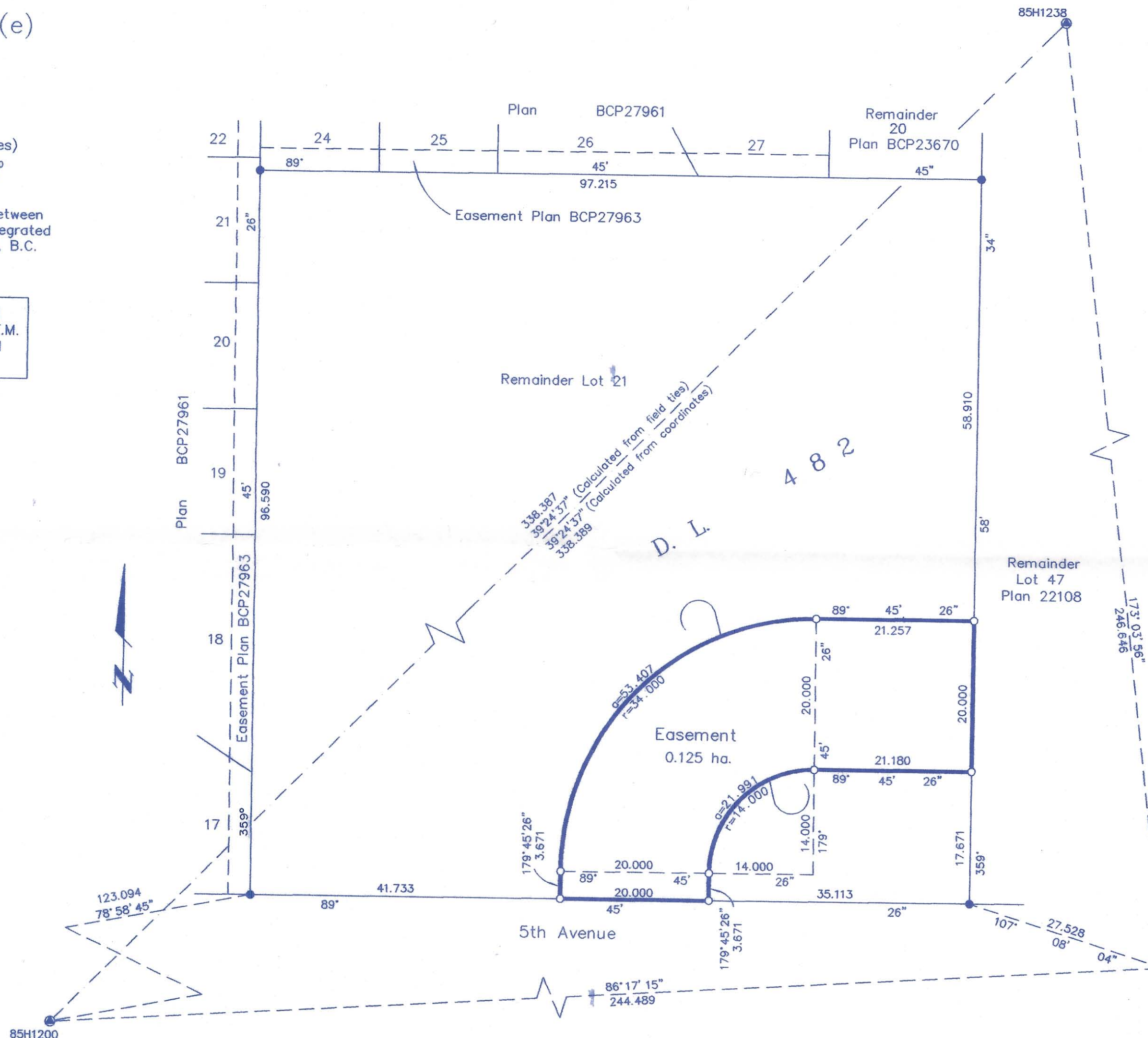


Grid bearings are derived from observations between
 control monuments 85H1200 and 85H1238, integrated
 survey area number 39, City of Prince George, B.C.
 NAD83(CSRS)

Note: This plan shows ground level measured
 distances. Prior to computation of U.T.M.
 co-ordinates multiply by the combined
 factor 0.9995092

LEGEND

- Standard Iron Post Found
- Standard Iron Post Placed
- ⊙ Control Monument Found
- △ Traverse Hub Placed



REGISTRAR

BB656377

I, Gordon Kilbride, a British Columbia Land Surveyor, of
 Prince George, in British Columbia, certify that I was
 present at and personally superintended the survey
 represented by this plan, and that the survey and plan
 are correct. The field survey was completed on the 18th day
 of June, 2007. The plan was completed and
 checked, and the checklist filed under # 78572, on the
 19 day of March, 2008.

Gordon Kilbride
 Gordon Kilbride, B.C.L.S.

This plan lies within the Fraser-Fort
 George Regional District.

McElhanney
 McElhanney Associates
 Land Surveying Ltd.
 Prince George, B.C.

Ph: (250) 562-1196 Fax: 563-1941

F.B.- D.L.- 482 File No. -5523-E