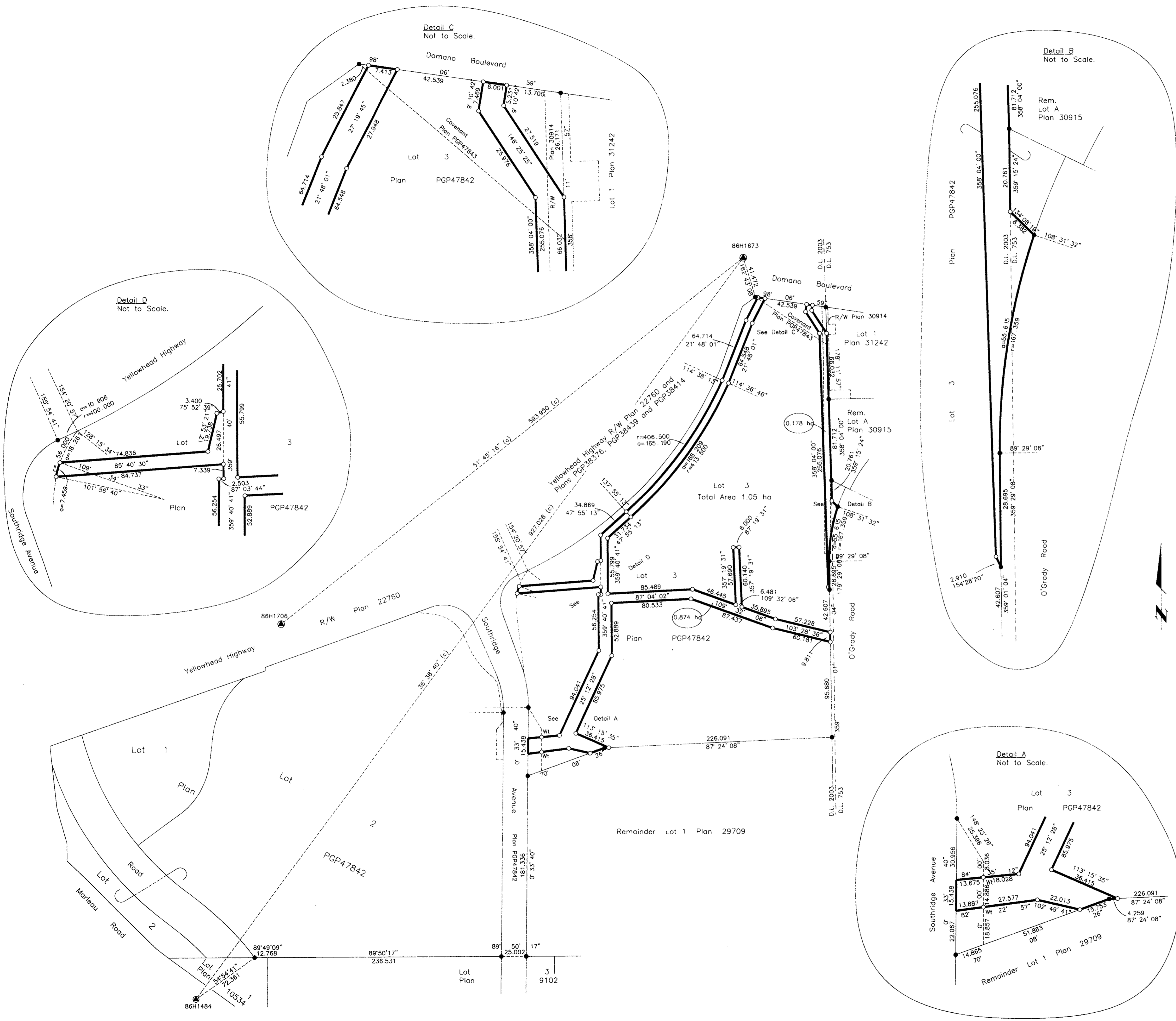


Deposited in the Land Title Office at New Westminster this 31 day of JAN 2003

REGISTRAR
BV37 996



REFERENCE PLAN OF STATUTORY
RIGHT OF WAY WITHIN LOT 3,
PLAN PGP47842, DISTRICT
LOTS 753 AND 2003, CARIBOO DISTRICT.
PREPARED PURSUANT TO SECTION 113 OF THE
LAND TITLE ACT.
B.C.G.S. 93C.097

Scale: 1 : 2000 (Distances are in metres)

LEGEND
 ● Standard Iron Post Found
 ○ Standard Iron Post Placed
 ⊙ Control Monument

Grid bearings are derived from observations between control monuments 86H1484 and 86H1673, integrated survey area number 39, City of Prince George, B.C. NAD83(CSRS)

Note: This plan shows ground level measured distances. Prior to computation of U.T.M. co-ordinates multiply by the combined factor 0.9995006.

I, Gordon Kilbride, a British Columbia Land Surveyor, of Prince George, in British Columbia, certify that I was present at and personally superintended the survey represented by this plan, and that the survey and plan are correct. The survey was completed on the 5th day of November, 2002.

Gordon Kilbride
Gordon Kilbride, B.C.L.S.

This plan lies within the Fraser-Fort George Regional District.

KILBRIDE LAND SURVEYING LTD.
British Columbia Land Surveyors
Prince George, B.C.
Ph: (250) 562-1196 Fax: 562-3656
F.B.- RA D.L.- 2003 FILE No.- 020167R3