

PLAN BCP

BB178345  
 Deposited in the Land Title Office  
 at New Westminster, B.C.  
 this 7 day of May 2007

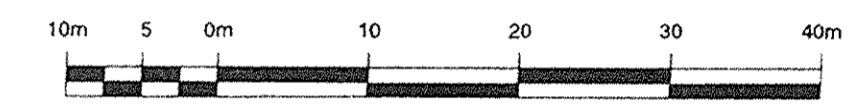
Registrar

REFERENCE PLAN TO ACCOMPANY CITY  
 OF PRINCE GEORGE HIGHWAY CLOSURE  
 AND REMOVAL OF HIGHWAY DEDICATION  
 BYLAW 7929, OVER A PORTION OF ROAD  
 DEDICATED BY PLAN 1268, ADJACENT TO  
 WEST AND EAST BOUNDARIES OF LOT 16, BK.10,  
 PLAN 1268, D.L. 343, CARIBOO DISTRICT

Pursuant to Section 40 of the Community  
 Charter and Section 120 of the Land Title Act

B.C.G.S. 93G.097

SCALE 1:500



LEGEND

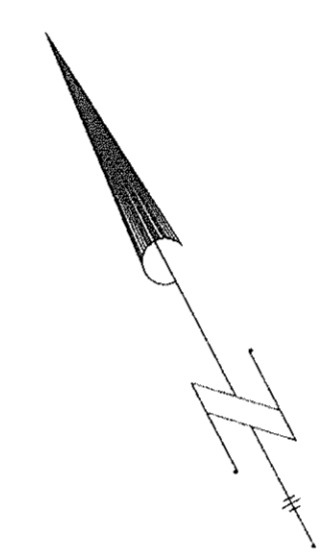
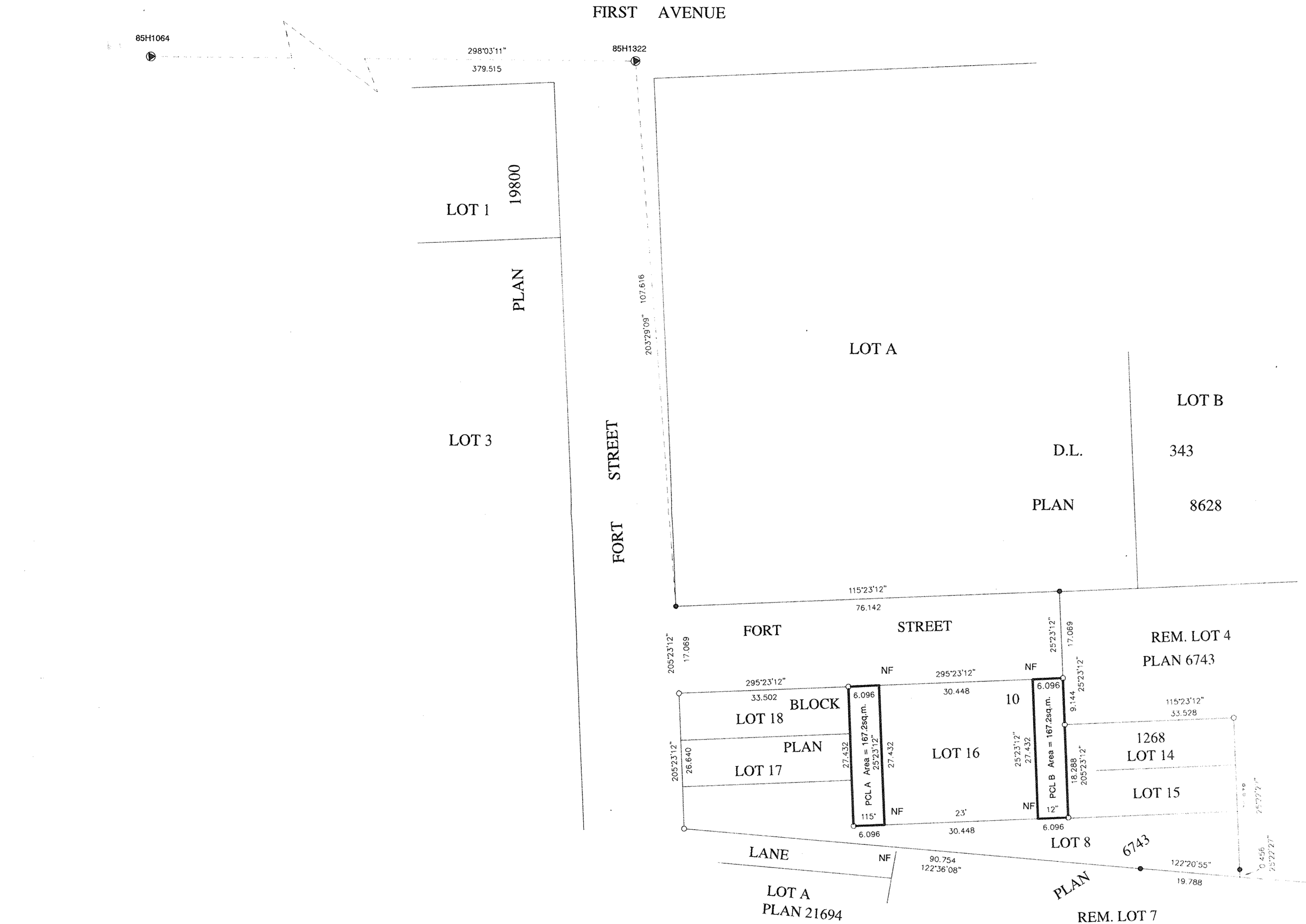
Grid bearings are derived from observations between control monuments 85H1322 and 85H1064, Integrated Survey Area Number 39, City of Prince George. NAD3 (CSRS)

This plan shows ground level measured distances. Prior to computation of U.T. M. coordinates multiply by combined factor of 0.999516.

- DENOTES STANDARD IRON POST FOUND
  - DENOTES STANDARD IRON POST PLACED
  - ⊕ INTEGRATED SURVEY AREA CONTROL MONUMENT
- ALL DISTANCES ARE IN METRES

BOOK OF REFERENCE

DESCRIPTION	AREA
PARCEL A, D.L.343, PLAN BCP	167.2 sq.m.
PARCEL B, D.L.343, PLAN BCP	167.2 sq.m.



**R.E. GOOK & ASSOCIATES**  
**B.C. & CANADA LAND SURVEYORS**  
 691 FRONT STREET QUESNEL, B.C. V2J 2K9  
 886 VANCOUVER STREET PRINCE GEORGE, B.C. V2L 2P5  
 PHONE: 992-2424 FAX: 564-4242  
 PHONE: 992-3434 FAX: 564-5343  
 FILE: 07-0462PG=1  
 regook@northernsurveys.com

This plan lies within the Fraser - Fort George Regional District

I, Richard E. Gook, a British Columbia land surveyor, of the city of Prince George, in British Columbia, certify that I was present at and personally superintended the survey represented by this plan, and that the survey and plan are correct. The field survey

completed and checked, and the checklist filed under ECP - 65060 on the 28th day of May, 2007.

*(Signature)*

B.C.L.S.