

EXPLANATORY PLAN FOR LEASEHOLD OF
PART OF THE MAIN FLOOR OF A ONE
STORY BUILDING LOCATED ON LOT C,
DISTRICT LOT 8180, CARIBOO DISTRICT,

PLAN BCP25328 *328*

Pursuant to Section 99
of the Land Title Act.

B.C.G.S. 93G.087

Scale: 1 : 750 (Distances are in metres)

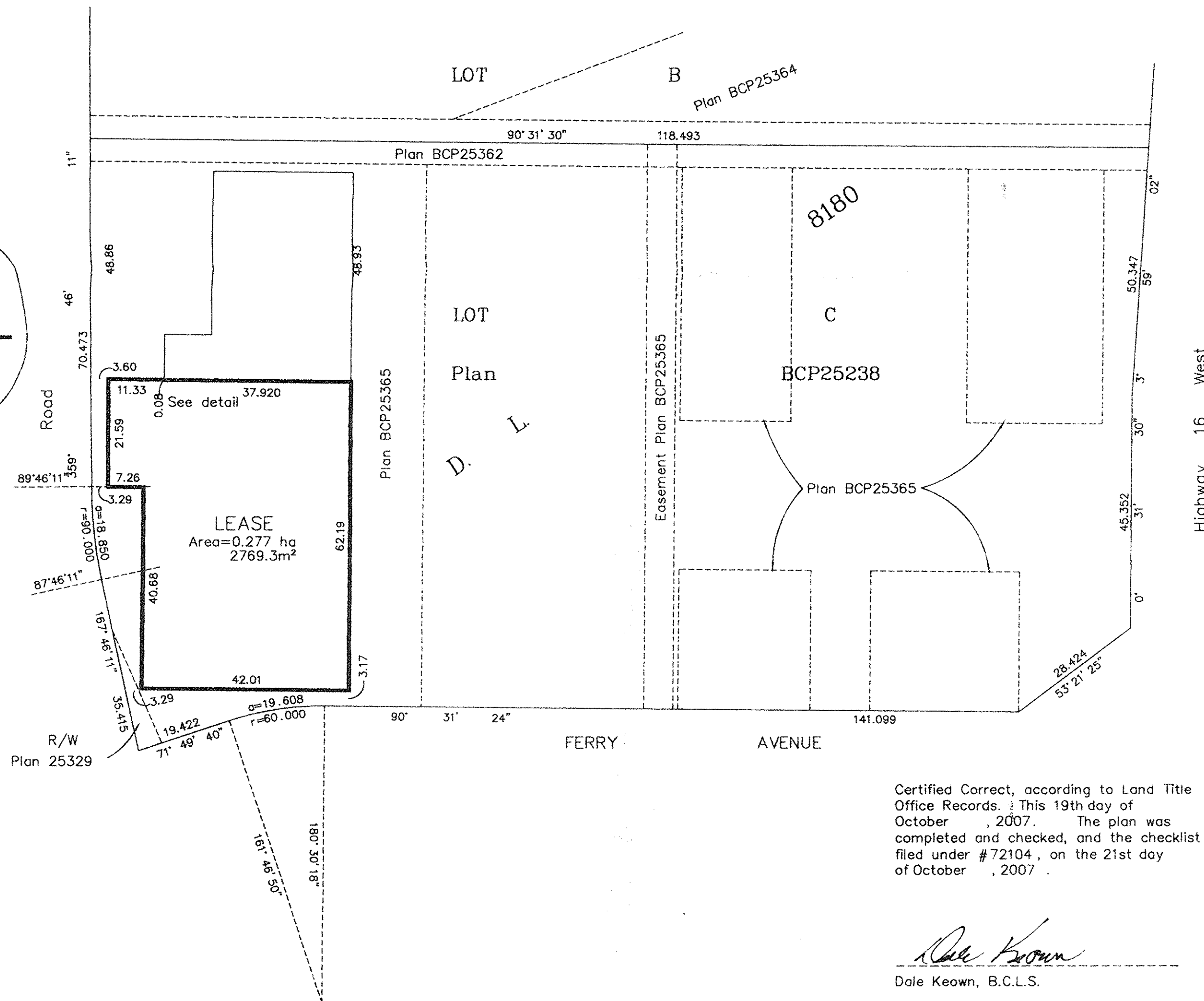
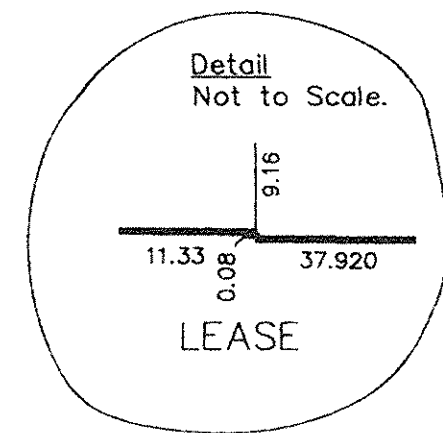


PLAN NO. BCP 33868

Deposited in the Land Title Office at New
Westminster this 6 day of DEC, 2007.

BB175092

REGISTRAR



Note:
Lease boundaries taken from concrete
foundation and centreline of demise units.

Certified Correct, according to Land Title
Office Records. This 19th day of
October, 2007. The plan was
completed and checked, and the checklist
filed under #72104, on the 21st day
of October, 2007.

Dale Keown
Dale Keown, B.C.L.S.

This plan lies within the Fraser-Fort
George Regional District.

McElhanney
McElhanney Associates
Land Surveying Ltd.

Prince George, B.C.
Ph: (250) 562-1196 Fax: 563-1941

F.B.- RA | D.L.- 8180 | File No. - 5462-191