

EXPLANATORY PLAN OF STATUTORY RIGHT OF WAY  
 THROUGH REM. PARCEL A (PLAN 18353), PLAN 1268,  
 DISTRICT LOT 343  
 CARIBOO DISTRICT

B.C.G.S. 93G.097  
 PURSUANT TO SECTION 113 OF THE LAND TITLE ACT.

PLAN No. BCP 03282

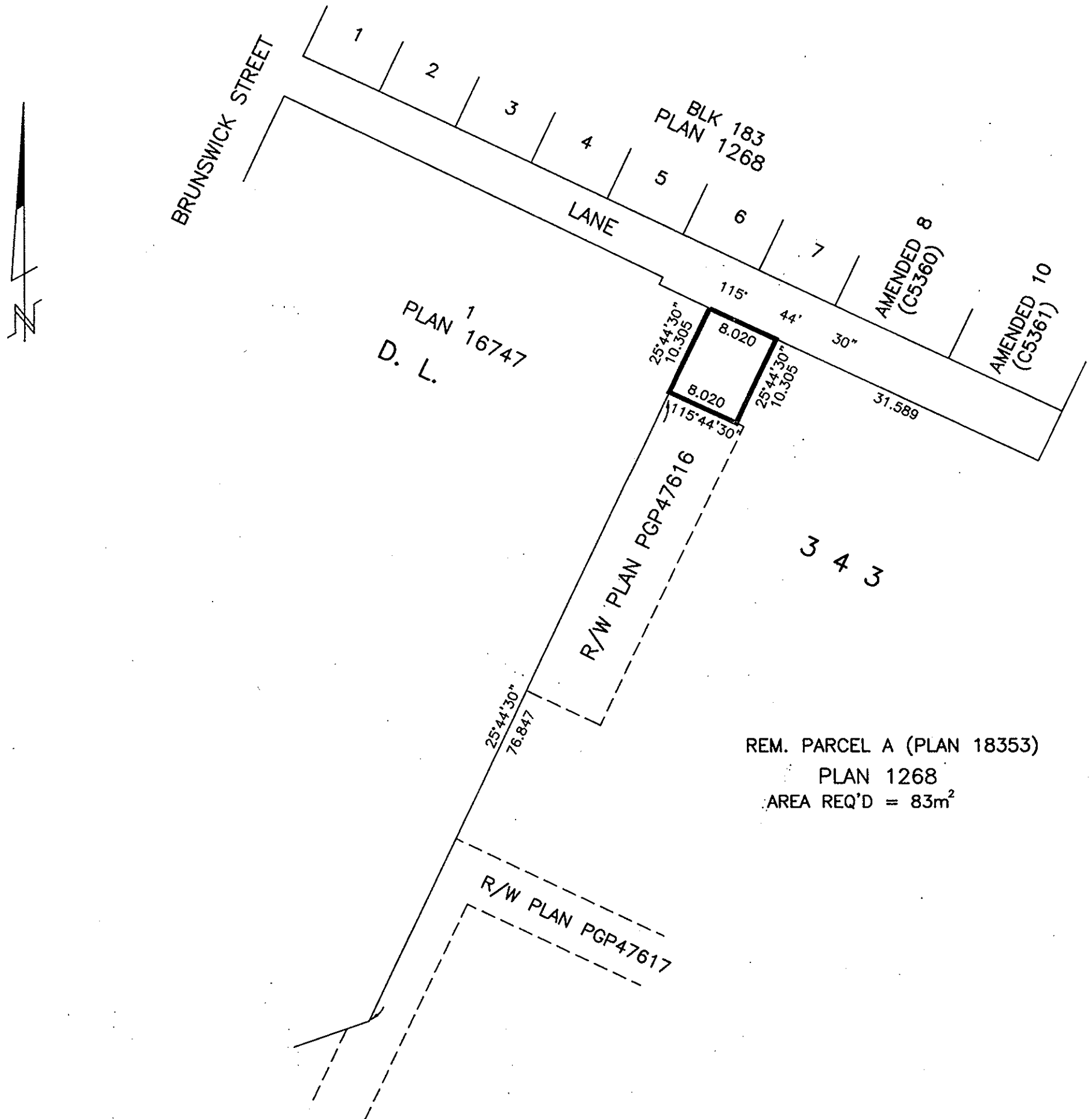
DEPOSITED IN THE LAND TITLE OFFICE  
 AT NEW WESTMINSTER, B.C., THIS 9<sup>th</sup>  
 DAY OF January, 2003.



SCALE= 1 : 500  
 ALL DISTANCES SHOWN ARE IN METRES.

BEARINGS ARE ASTRONOMIC, DERIVED FROM PLAN 18353.

REGISTRAR BV8285



REM. PARCEL A (PLAN 18353)  
 PLAN 1268  
 AREA REQ'D = 83m<sup>2</sup>

CERTIFIED CORRECT  
 ACCORDING TO LAND TITLE OFFICE RECORDS  
 THIS 12th DAY OF DECEMBER, 2002.

THIS PLAN LIES WITHIN THE FRASER-FORT GEORGE REGIONAL DISTRICT.

R. L. JOHNS, B.C.L.S., C.L.S.

R. L. JOHNS LAND SURVEYING LTD.  
 LEGAL AND ENGINEERING SURVEYS  
 240 VICTORIA STREET  
 PRINCE GEORGE, B. C. V2L 2J4  
 PHONE: (604)562-5759  
 FAX: (604)562-5703

2002125