

Deposited in the Land Title Office at New Westminster this 27th day of JANUARY 2003.

REGISTRAR

POSTING PLAN OF BLOCK C OF DISTRICT LOT 2155, CARIBOO DISTRICT.

B.C.G.S. 93G.097 0250466

Scale: 1 : 2000



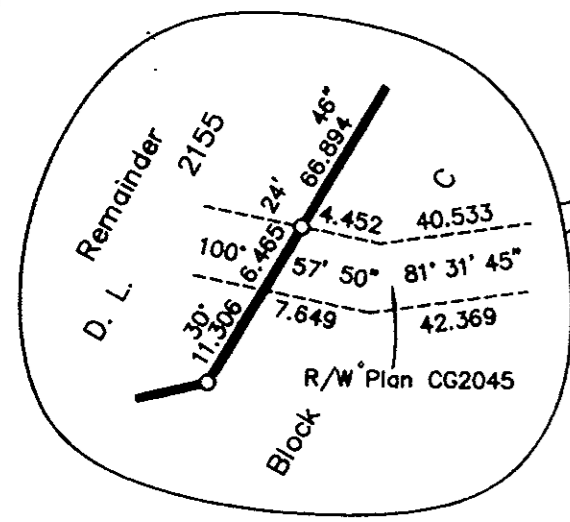
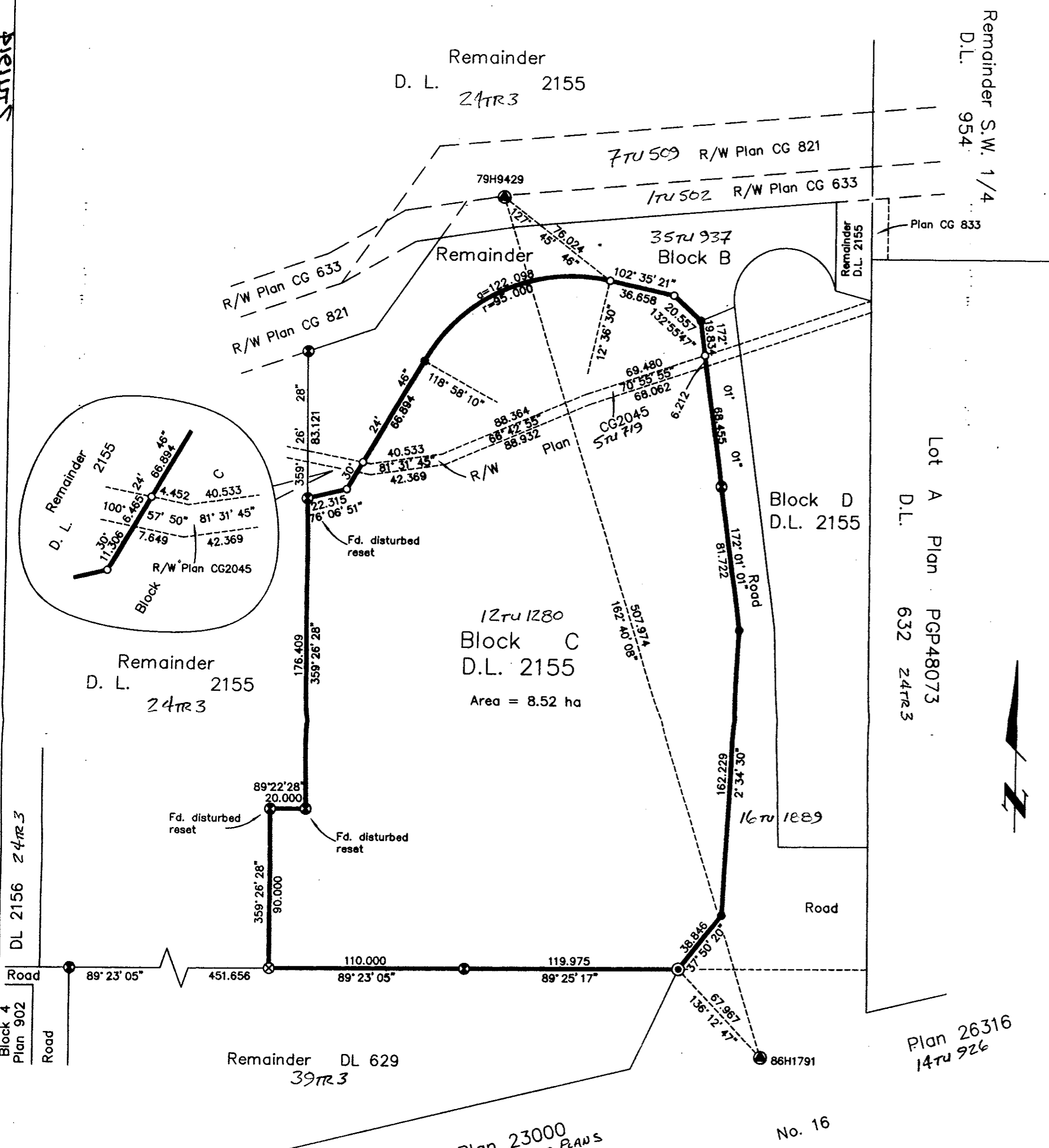
LEGEND

All distances are in metres and decimals thereof unless otherwise shown.

Grid bearings are derived from observations between control monuments 86H1791 and 79H9429, integrated survey area number 39, City of Prince George, B.C. NAD83(CSRS)

Note: This plan shows ground level measured distances. Prior to computation of U.T.M. co-ordinates multiply by the combined factor 0.99950065

- ⊙ Standard Concrete Post Found
- ⊗ Standard Capped Post Found
- ⊙ Standard Capped Post Placed
- Standard Iron Post Found
- Standard Iron Post Placed
- Control Monument



Remainder S.W. 1/4 D.L. 954

Lot A Plan GGP48073 D.L. 632 24TR3

Plan 26316 14TU 926

2TU 1914

I, Gordon Kilbride, a British Columbia Land Surveyor, of Prince George, in British Columbia, certify that I was present at and personally supervised the survey represented by this plan, and that the survey and plan are correct. The survey was completed on the 20th day of September, 2002.

Gordon Kilbride
Gordon Kilbride B.C.L.S.

The survey represented by this plan was carried out for the Ministry of Sustainable Resource Management.

[Signature]
Surveyor General
Victoria, B.C. JANUARY 6, 2003

This plan lies within the Fraser-Fort George Regional District.

KILBRIDE LAND SURVEYING LTD.
British Columbia Land Surveyors
Prince George, B.C.
Ph: (250) 562-1196 Fax: 562-3656

F.B.- RA D.L.- 2155 FILE No. - 020179