

**AIR SPACE PLAN**  
**OF PARCEL 1, DISTRICT LOT 343,**  
**CARIBOO DISTRICT, PLAN BCP 29643,**  
**EXCEPT THEREOUT ALL SPACE BELOW THE**  
**570.532, 570.430 and 570.291 METRE**  
**PLANES AS SHOWN AND ABOVE THE**  
**607.113 METRE PLANE OF GEODETIC DATUM.**

Pursuant to Section 143  
of the Land Title Act.  
B.C.G.S. 93G.097

Scale: 1 : 750 (Distances are in metres)

Grid bearings are derived from observations between control monuments 85H1341 and 85H1090, integrated survey area number 39, City of Prince George, B.C. NAD83(CSRS)

Note: This plan shows ground level measured distances. Prior to computation of U.T.M. co-ordinates multiply by the combined factor 0.9995159

**LEGEND**

Coordinates are local based on the Northwest corner of Parcel 1:  
Assumed N 594085.736 E 516480.245  
Elevations are in Metres to Geodetic Datum based on Control Monument 85H1341  
Elevation = 571.595 m

- Lead Plug Found
- Standard Iron Post Found
- Control Monument Found
- elv denotes elevation

Book Of Reference		Air Space Parcel Corners	Volume
Description		A,B,C,F,E,G,H,I,L,M,N,O,P,K,Q,R,S,T,U,V,W,X,Y,Z,a,b,c,d,e,f,g,h	169,939.3 m <sup>3</sup>
Air Space Parcel A of Parcel 1, D.L. 343, Cariboo District, Plan BCP			25,922.5 m <sup>3</sup>
Air Space Parcel B of Parcel 1, D.L. 343, Cariboo District, Plan BCP		C,D,E,F,c,d,h,i	294.9 m <sup>3</sup>
Air Space Parcel C of Parcel 1, D.L. 343, Cariboo District, Plan BCP		I,J,K,L,M,N,O,P	

Co-ordinate List			
Corner	Northing	Easting	Elevation
1	5974085.736	516480.245	570.430
2	5974054.364	516546.327	570.430

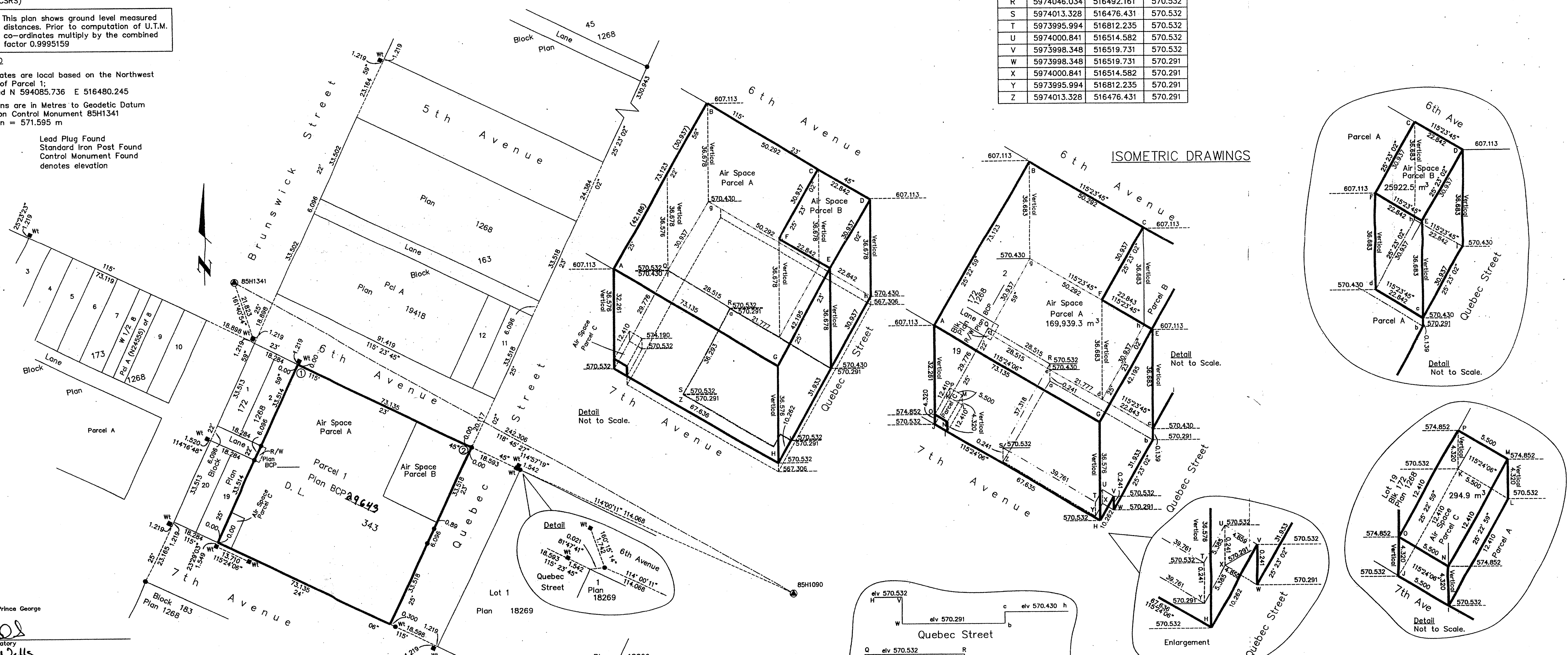
Co-ordinate List			
Corner	Northing	Easting	Elevation
a	5974046.034	516492.161	570.291
b	5974026.439	516533.070	570.291
c	5974026.439	516533.070	570.430
d	5974036.235	516512.436	570.430
e	5974046.034	516492.161	570.430
f	5974058.526	516467.581	570.430
g	5974085.736	516480.245	570.430
h	5974064.183	516525.704	570.430
i	5974054.364	516546.327	570.430

Co-ordinate List			
Corner	Northing	Easting	Elevation
A	5974019.671	516448.899	607.113
B	5974085.736	516480.245	607.113
C	5974064.183	516525.704	607.113
D	5974054.364	516546.327	607.113
E	5974026.439	516533.070	607.113
F	5974036.235	516512.436	607.113
G	5973988.299	516514.963	607.113
H	5973988.299	516514.963	570.532
I	5974017.311	516453.867	570.532
J	5974019.671	516448.899	570.532
K	5974030.883	516454.219	570.532
L	5974028.523	516459.187	570.532
M	5974028.523	516459.187	574.852
N	5974017.311	516453.867	574.852
O	5974019.671	516448.899	574.852
P	5974030.883	516454.219	574.852
Q	5974058.526	516467.581	570.532
R	5974046.034	516492.161	570.532
S	5974013.328	516476.431	570.532
T	5973995.994	516812.235	570.532
U	5974000.841	516514.582	570.532
V	5973998.348	516519.731	570.532
W	5973998.348	516519.731	570.291
X	5974000.841	516514.582	570.291
Y	5973995.994	516812.235	570.291
Z	5974013.328	516476.431	570.291

**AIR SPACE PLAN NO. BCP 30881**

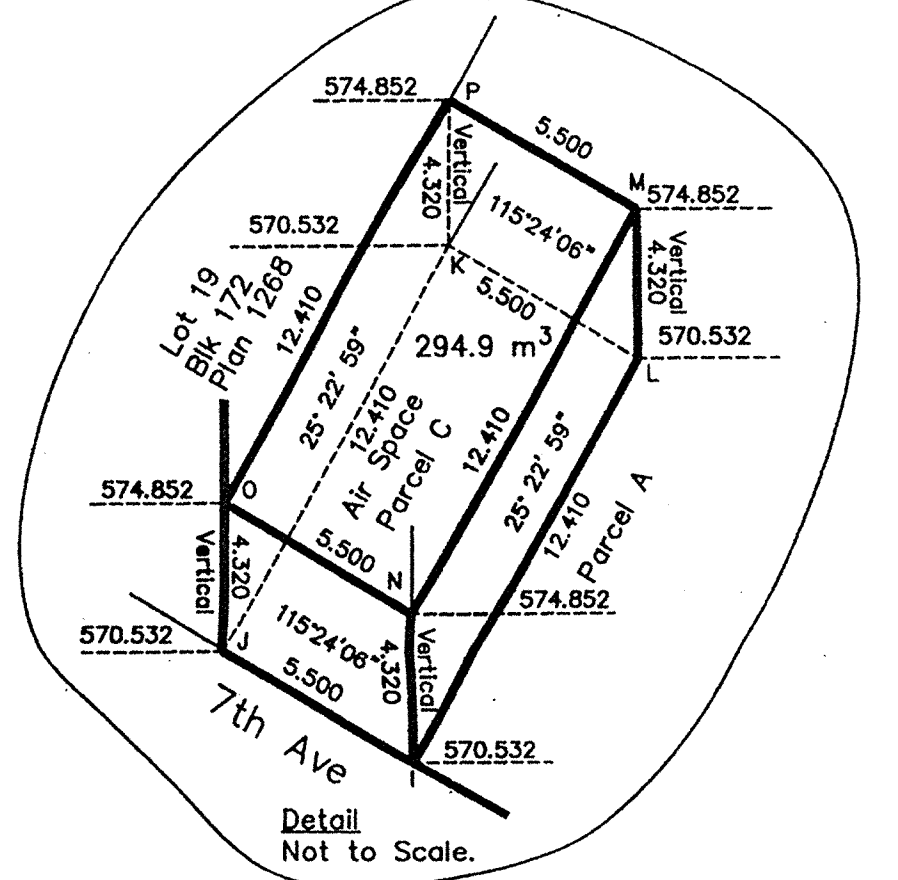
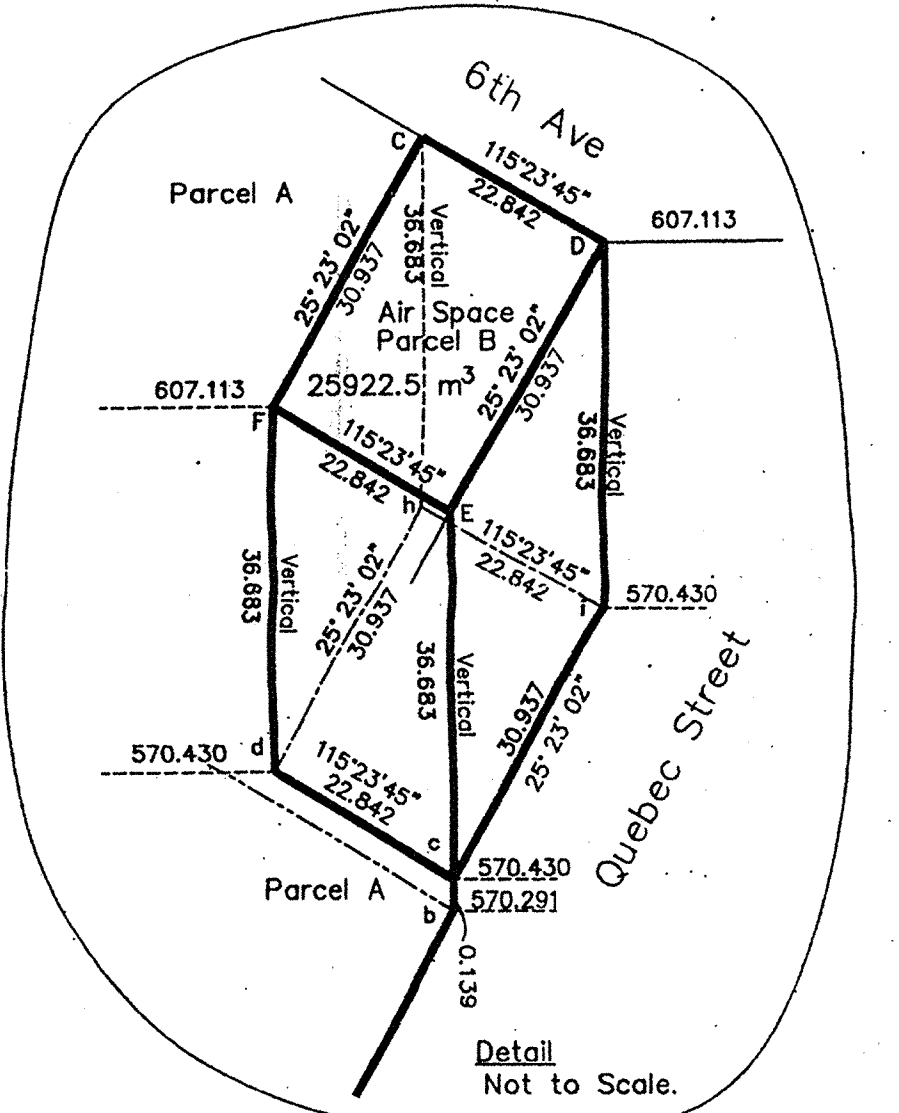
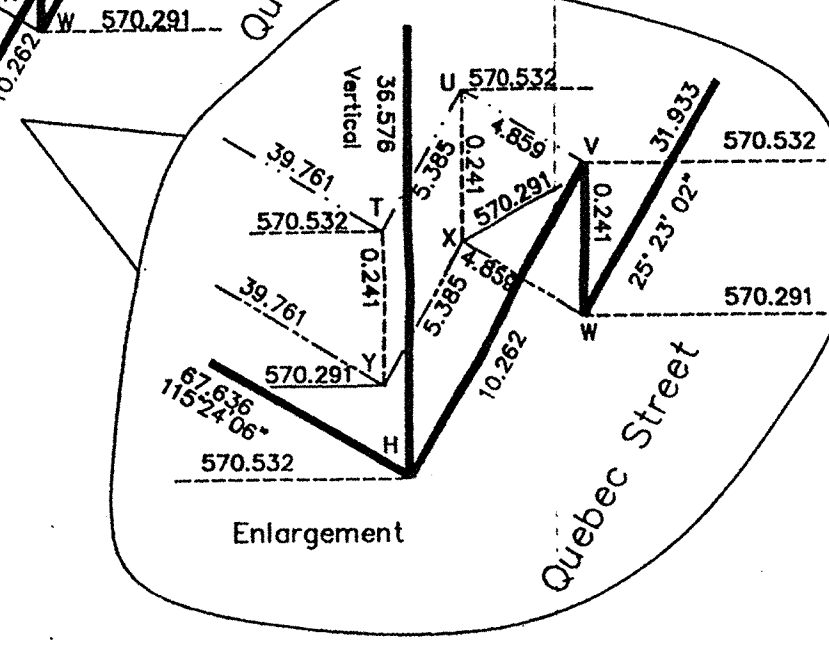
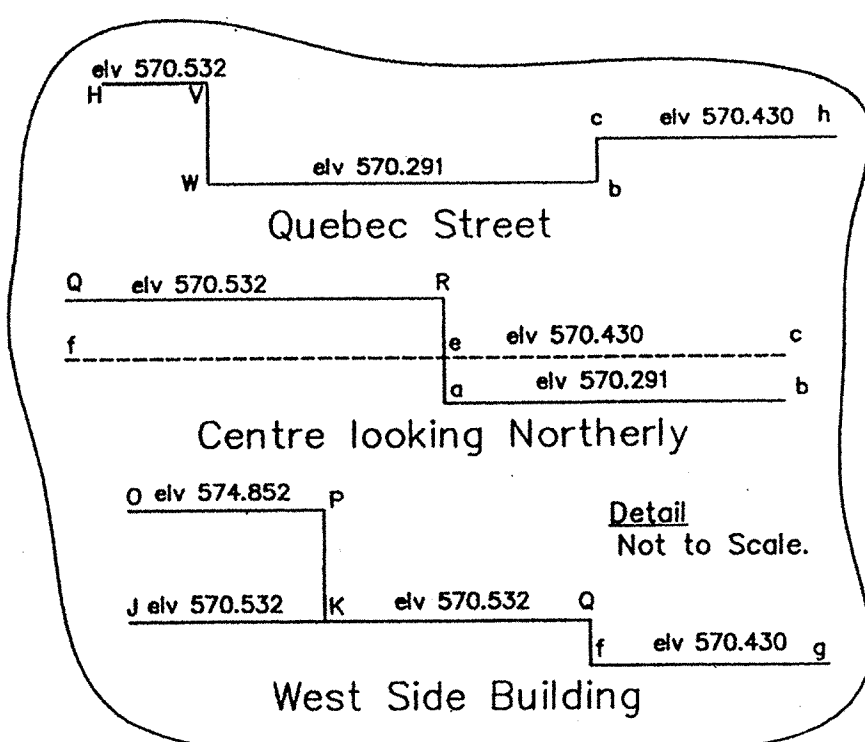
Deposited in the Land Title Office at New Westminster this 26 day of June 2007.

REGISTRAR



Owner: City of Prince George  
Authorized Signatory: Ian Wells  
Print Name: Ian Wells  
Authorized Signatory: Brenda Sieben  
Print Name: Brenda Sieben  
Address: 1100 Patricia Blvd, Prince George BC V2L 3V9  
Occupation: Property Administrator

I, Gordon Kilbride, a British Columbia Land Surveyor, of Prince George, in British Columbia, certify that I was present at and personally superintended the survey represented by this plan, and that the survey and plan are correct. The field survey was completed on the 14th day of February, 2007. The plan was completed and checked, and the checklist filed under #82078, on the 19th day of March, 2007.  
Gordon Kilbride, B.C.L.S.



Approved under the Land Title Act this 20 day of June, 2007.  
Approving Officer: [Signature]  
City of Prince George

This plan lies within the Fraser-Fort George Regional District.  
McElhanney Associates  
Land Surveying Ltd.  
Prince George, B.C.  
Ph: (250) 562-1196 Fax: 563-1941  
F.B.- XM 65 D.L.- 343(172) File No. -5385-AIR