

PLAN OF EASEMENTS THROUGH FRACTIONAL
N.E. 1/4 D.L. 815 AND THROUGH REMAINDER
FRACTIONAL S.E. 1/4 D.L. 815
CARIBOO DISTRICT

B.G.C.S. 92J.007

PURSUANT TO SECTION 99 OF THE LAND TITLE ACT.



SCALE = 1 : 1250

ALL DISTANCE SHOWN ARE IN METRES.

BEARINGS ARE ASTRONOMIC AND ARE DERIVED FROM
THE EAST BOUNDARY OF REM. FRAC. S.E. 1/4 D.L. 815
AS SHOWN ON PLAN PGP40895.

LEGEND

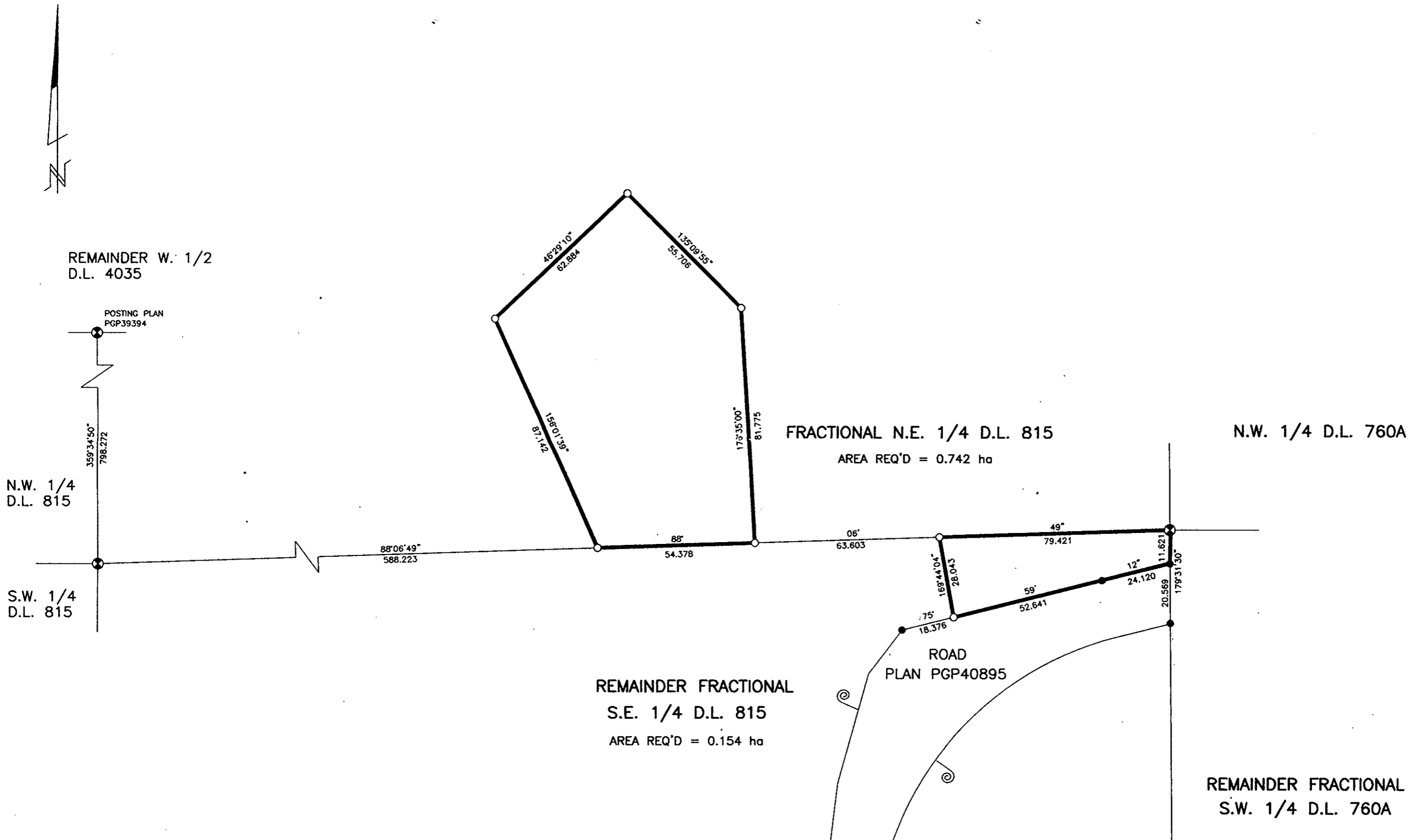
- STANDARD IRON POST FOUND
- STANDARD IRON POST PLACED
- ⊗ STANDARD CAPPED POST FOUND

BOOK OF REFERENCE

DESCRIPTION	PID NUMBER	AREA
FRACTIONAL N.E. 1/4 D.L. 815	006-527-493	0.742ha
REMAINDER FRACTIONAL S.E. 1/4 D.L. 815	014-967-791	0.154ha

PLAN No. BCP 03054
BT465077
DEPOSITED IN THE LAND TITLE OFFICE
AT NEW WESTMINSTER, B.C., THIS 11
DAY OF DEC, 20 2002

REGISTRAR



I, RONALD L. JOHNS, A BRITISH COLUMBIA LAND SURVEYOR, OF PRINCE GEORGE, IN BRITISH COLUMBIA, CERTIFY THAT I WAS PRESENT AT AND PERSONALLY SUPERINTENDED THE SURVEY REPRESENTED BY THIS PLAN AND THAT THE SURVEY AND PLAN ARE CORRECT. THE SURVEY WAS COMPLETED ON THE 30TH DAY OF MAY, 2002.

R.L. Johns
R.L. JOHNS, B.C.L.S., C.L.S.

THIS PLAN LIES WITHIN THE FRASER-FORT GEORGE REGIONAL DISTRICT.

R. L. JOHNS LAND SURVEYING LTD.
LEGAL AND ENGINEERING SURVEYS
240 VICTORIA STREET
PRINCE GEORGE, B. C. V2L 2J4
PHONE: (250)562-5759
FAX: (250)562-5703
2002045 BB3-17-20