

REFERENCE PLAN OF THE NORTH 10 CHAINS
 OF THE EAST 12 CHAINS OF
 DISTRICT LOT 6881, CARIBOO DISTRICT.
 Pursuant to Section 100(1)(a) of
 the Land Title Act.
 B.C.G.S. 93G.096

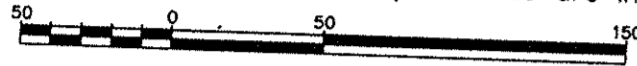
PLAN NO. BCP 30028

Deposited in the Land Title Office at New
 Westminster this 15 day of May 2007.

REGISTRAR

6370117

Scale: 1 : 2500 (Distances are in metres)

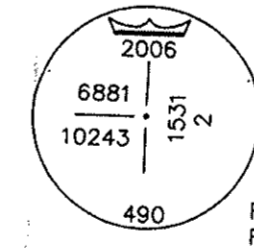
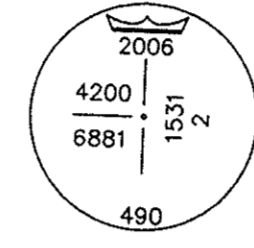
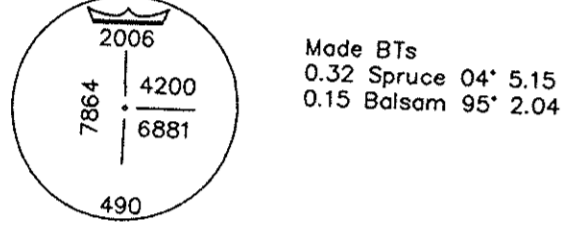
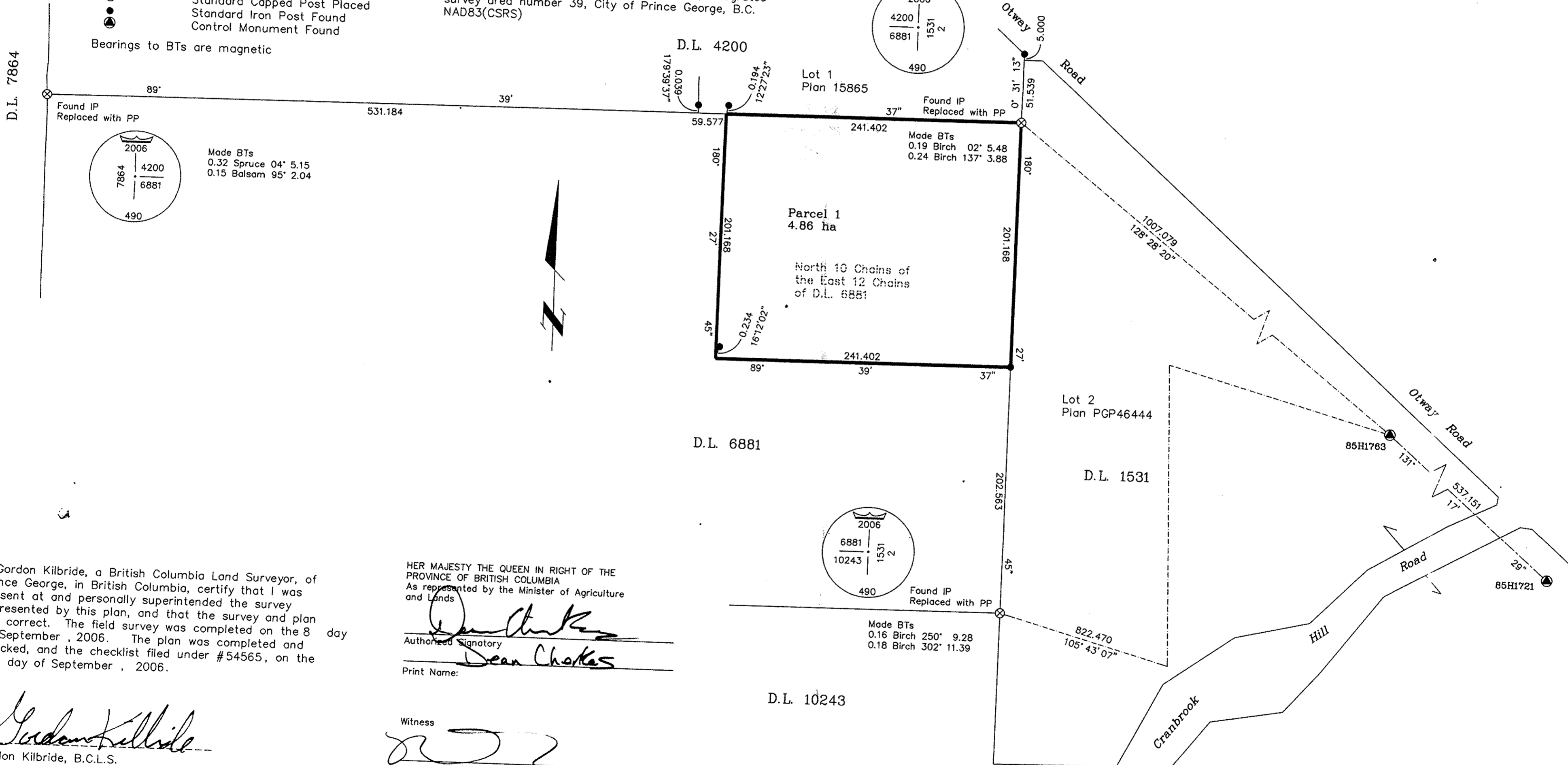


Note: This plan shows ground level measured
 distances. Prior to computation of U.T.M.
 co-ordinates multiply by the combined
 factor 0.9995105

Grid bearings are derived from observations between
 control monuments 85H1763 and 85H1721, integrated
 survey area number 39, City of Prince George, B.C.
 NAD83(CSRS)

LEGEND

- ⊗ Standard Capped Post Placed
 - Standard Iron Post Found
 - ⊙ Control Monument Found
- Bearings to BTs are magnetic



I, Gordon Kilbride, a British Columbia Land Surveyor, of
 Prince George, in British Columbia, certify that I was
 present at and personally superintended the survey
 represented by this plan, and that the survey and plan
 are correct. The field survey was completed on the 8
 of September, 2006. The plan was completed and
 checked, and the checklist filed under #54565, on the
 22 day of September, 2006.

HER MAJESTY THE QUEEN IN RIGHT OF THE
 PROVINCE OF BRITISH COLUMBIA
 As represented by the Minister of Agriculture
 and Lands

Dean Chotas
 Authorized Signatory

Print Name: Dean Chotas

Witness

P.M. GARDEN
 Print Name

Suite 200-1488 47 Ave
 Address

PRINCE GEORGE BC V2L 4Y2
 Postal Code

PROJECT OFFICER
 Occupation

Gordon Kilbride
 Gordon Kilbride, B.C.L.S.

This plan lies within the Fraser-Fort
 George Regional District.

McElhanney
 McElhanney Associates
 Land Surveying Ltd.
 Prince George, B.C.
 Ph: (250) 561-2229 Fax: 563-1941

F.B.- XT27 | D.L.- 6881 | File No. 5372-0