

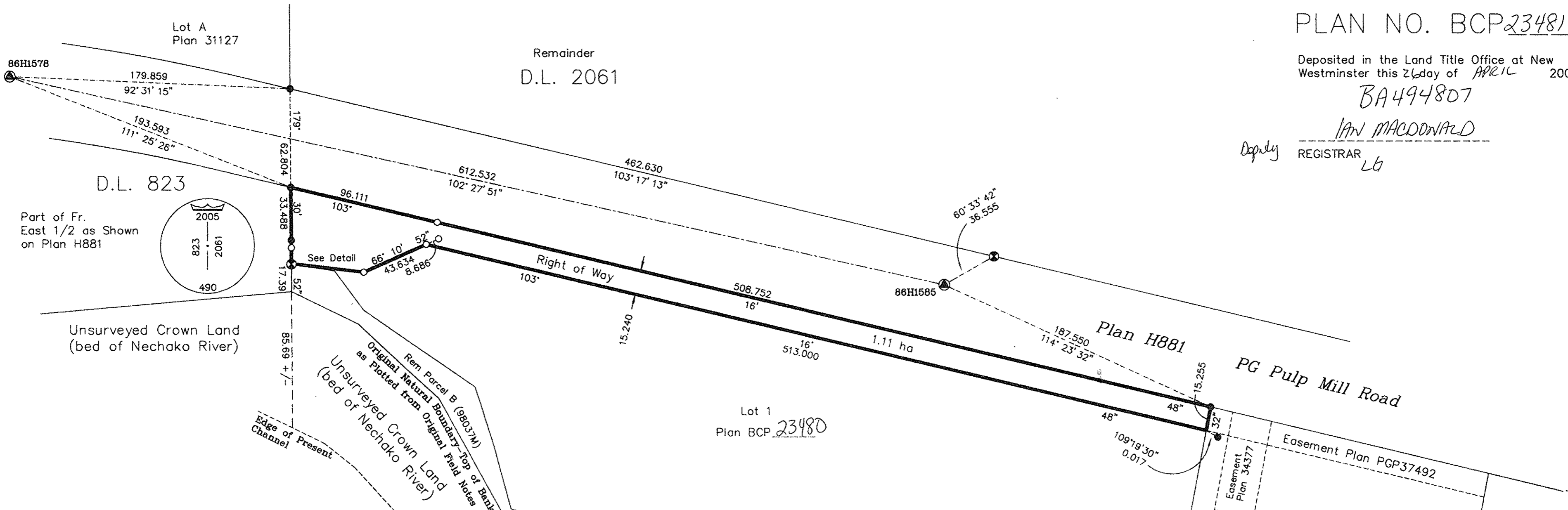
PLAN NO. BCP23481 *2005*

Deposited in the Land Title Office at New Westminster this 26 day of *APRIL* 2006.

*BA494807*

*IAN MACDONALD*  
Deputy REGISTRAR *LG*

Remainder  
D.L. 2061



REFERENCE PLAN OF STATUTORY  
RIGHT OF WAY OVER PART  
OF LOT 1, DISTRICT LOT 2061,  
CARIBOO DISTRICT, PLAN BCP *23480*.  
Pursuant to Section 113 of the  
Land Title Act.  
B.C.G.S. 93G.097

Scale: 1 : 2000 (Distances are in metres)

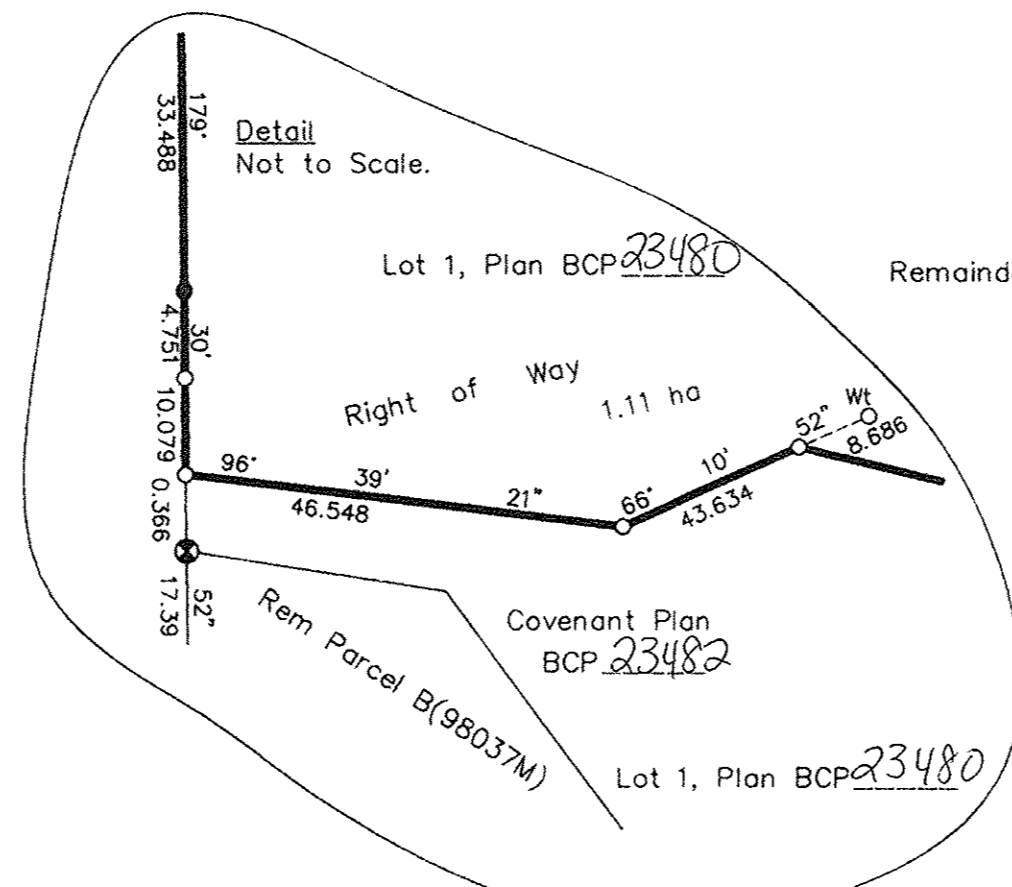


Grid bearings are derived from observations between control monuments 86H1578 and 86H1585, integrated survey area number 39, City of Prince George, B.C. NAD83(CSRS)

Note: This plan shows ground level measured distances. Prior to computation of U.T.M. co-ordinates multiply by the combined factor 0.9995151

LEGEND

- ⊗ Standard Capped Post Found
- ⊙ Standard Iron Post Found
- Standard Iron Post Placed
- ⊕ Control Monument Found



I, Gordon Kilbride, a British Columbia Land Surveyor, of Prince George, in British Columbia, certify that I was present at and personally superintended the survey represented by this plan, and that the survey and plan are correct. The field survey was completed on the 18 day of October, 2005. The plan was completed and checked, and the checklist filed under #38993, on the 19 day of October, 2005.

*Gordon Kilbride*  
Gordon Kilbride, B.C.L.S.

This plan lies within the Fraser-Fort George Regional District.

KILBRIDE LAND SURVEYING LTD. British Columbia Land Surveyors Prince George, B.C. Ph: (250) 562-1196 Fax: 562-3656		
F.B.- CC5/27	D.L.- 2061	File No. -040265E