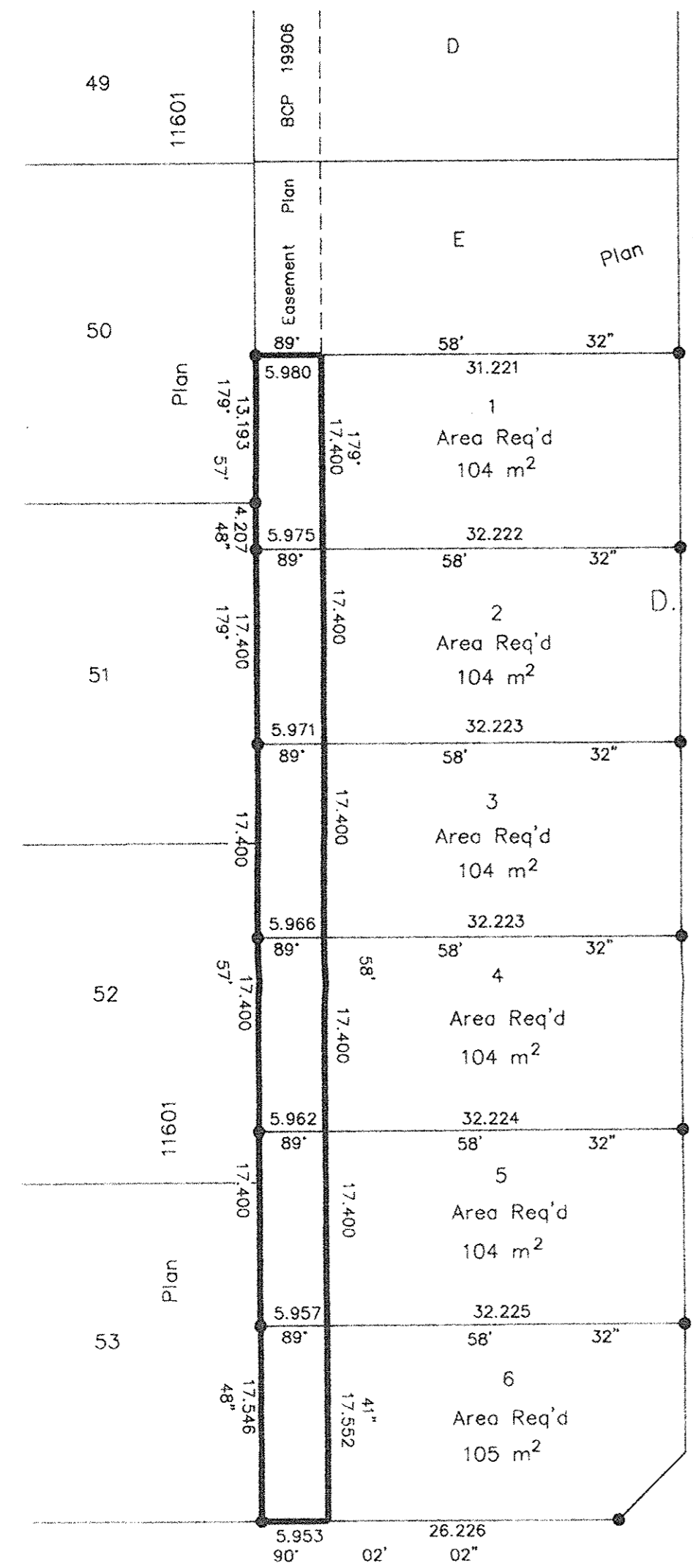


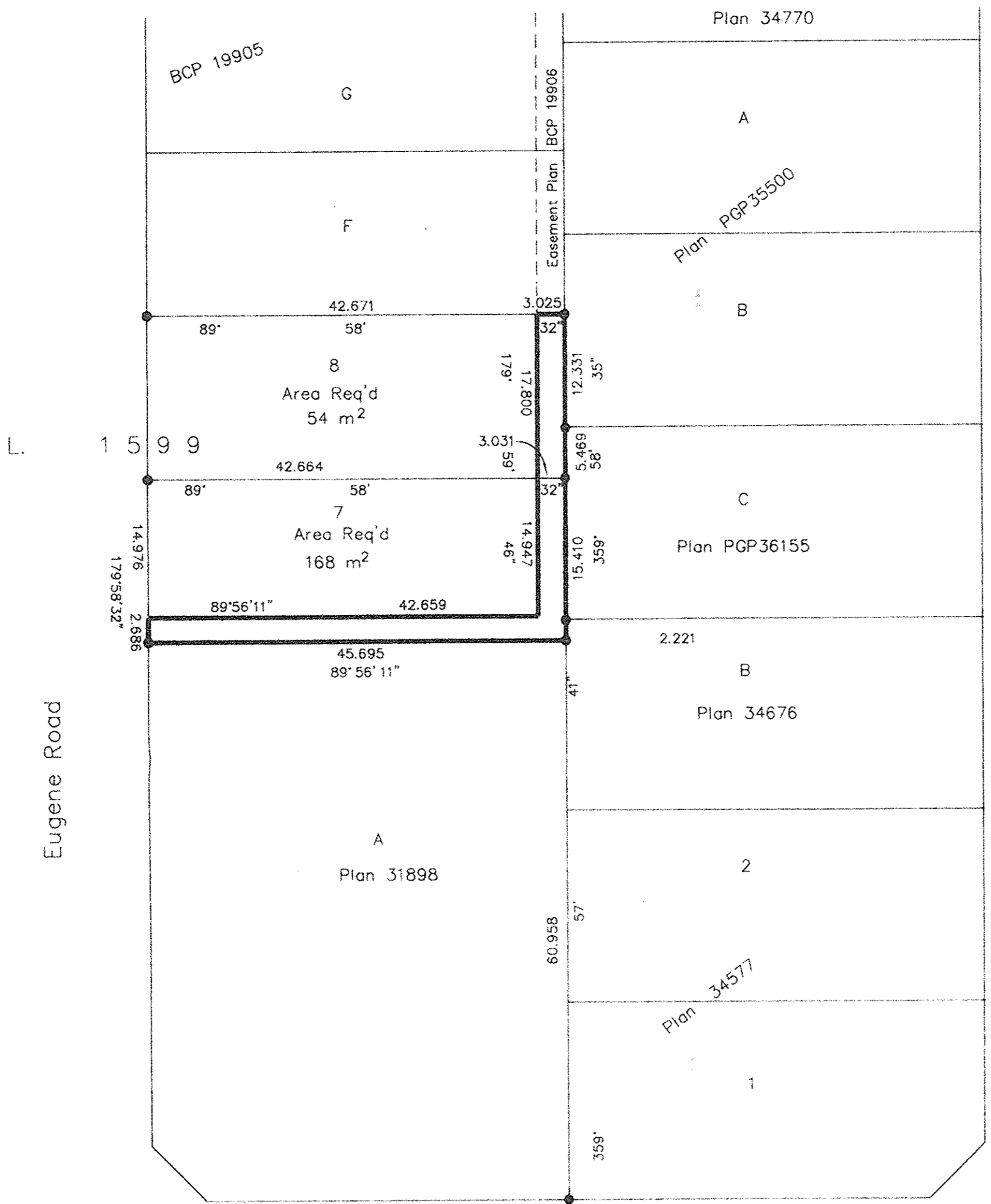
Deposited in the Land Title Office at New Westminster this 6 day of April 2006

BA 83065

Deputy REGISTRAR IAN MACDONALD LG



Helene Road



Eugene Road

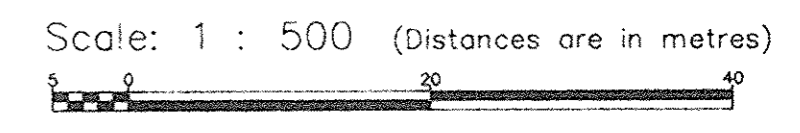
Aldeen Road

BOOK OF REFERENCE	
DESCRIPTION	AREA
Lot 1, D.L. 1599, Cariboo District, Plan BCP 23123	104 m ²
Lot 2, D.L. 1599, Cariboo District, Plan BCP 23123	104 m ²
Lot 3, D.L. 1599, Cariboo District, Plan BCP 23123	104 m ²
Lot 4, D.L. 1599, Cariboo District, Plan BCP 23123	104 m ²
Lot 5, D.L. 1599, Cariboo District, Plan BCP 23123	104 m ²
Lot 6, D.L. 1599, Cariboo District, Plan BCP 23123	105 m ²
Lot 7, D.L. 1599, Cariboo District, Plan BCP 23123	168 m ²
Lot 8, D.L. 1599, Cariboo District, Plan BCP 23123	54 m ²

I, Gordon Kilbride, a British Columbia Land Surveyor, of Prince George, in British Columbia, certify that I was present at and personally superintended the survey represented by this plan, and that the survey and plan are correct. The field survey was completed on the 26 day of October, 2005. The plan was completed and checked, and the checklist filed under # 45061, on the 1st day of March, 2006.

Gordon Kilbride
Gordon Kilbride, B.C.L.S.

REFERENCE PLAN FOR EASEMENT OVER PART OF LOTS 1 TO 8, DISTRICT LOT 1599, CARIBOO DISTRICT, PLAN BCP 23123. Pursuant to Section 99 of the Land Title Act. B.C.G.S. 93G.086



Bearings are astronomic, derived from Plan BCP 23123

LEGEND
● Standard Iron Post Found

This plan lies within the Fraser-Fort George Regional District.

KILBRIDE LAND SURVEYING LTD.
British Columbia Land Surveyors
Prince George, B.C.
Ph: (250) 562-1196 Fax: 562-3656

F.B.- JJ4/16	D.L.- 1599	File No. - 050199E3
--------------	------------	---------------------