

Deposited in the Land Title Office at New Westminister this 17 day of Nov. 2005

SUBDIVISION PLAN OF LOT 6, DISTRICT LOT 2003, CARIBOO DISTRICT, PLAN 13729.

B.C.G.S. 93G.087

Scale: 1 : 1000 (Distances are in metres)



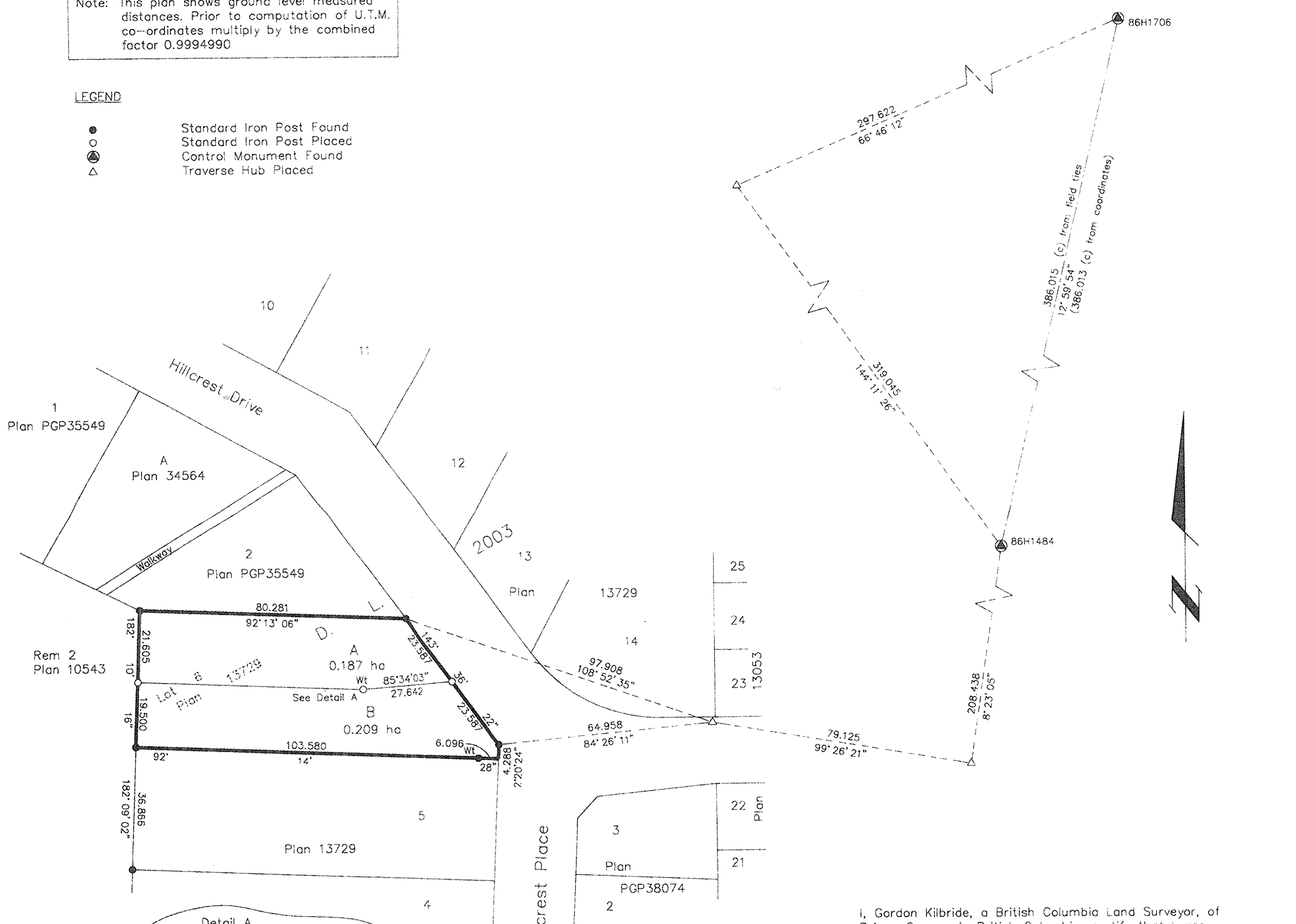
Grid bearings are derived from observations between control monuments 86H1706 and 86H1484, integrated survey area number 39, City of Prince George, B.C. NAD83(CSRS)

Note: This plan shows ground level measured distances. Prior to computation of U.T.M. co-ordinates multiply by the combined factor 0.9994990

REGISTRAR
REF. # BX 585112

LEGEND

- Standard Iron Post Found
- Standard Iron Post Placed
- ⊙ Control Monument Found
- △ Traverse Hub Placed



I, Gordon Kilbride, a British Columbia Land Surveyor, of Prince George, in British Columbia, certify that I was present at and personally superintended the survey represented by this plan, and that the survey and plan are correct. The field survey was completed on the 31 day of March, 2005. The plan was completed and checked, and the checklist filed under #30502, on the 27th day of April, 2005.

Gordon Kilbride
Gordon Kilbride, B.C.L.S.

Owner: *RSV*
Rewinder Singh Virk
Witness: *[Signature]*
Print Name: LAURIE NEBRIN
Address: 610 185 QUEBEC STREET
PRINCE GEORGE BC V2L1W1
Postal Code
Occupation: CLERK

Approved under the Land Title Act this day of
November 16, 2005.
[Signature]
Approving Officer
City of Prince George

This plan lies within the Fraser-Fort George Regional District.
KILBRIDE LAND SURVEYING LTD.
British Columbia Land Surveyors
Prince George, B.C.
Ph: (250) 562-1196 Fax: 562-3656
F.B.- RA | D.L.- 2003 | File No. - 040019