

EXPLANATORY PLAN TO ACCOMPANY
 CITY OF PRINCE GEORGE BYLAW
 No. 2417, CLOSING ROAD
 ADJACENT TO BLOCK 20, PLAN 902,
 DISTRICT LOT 629, CARIBOO DISTRICT.

PLAN NO. BCP 01976

Deposited in the Land Title Office at New
 Westminster this 5 day of Nov, 2002.

BT408188

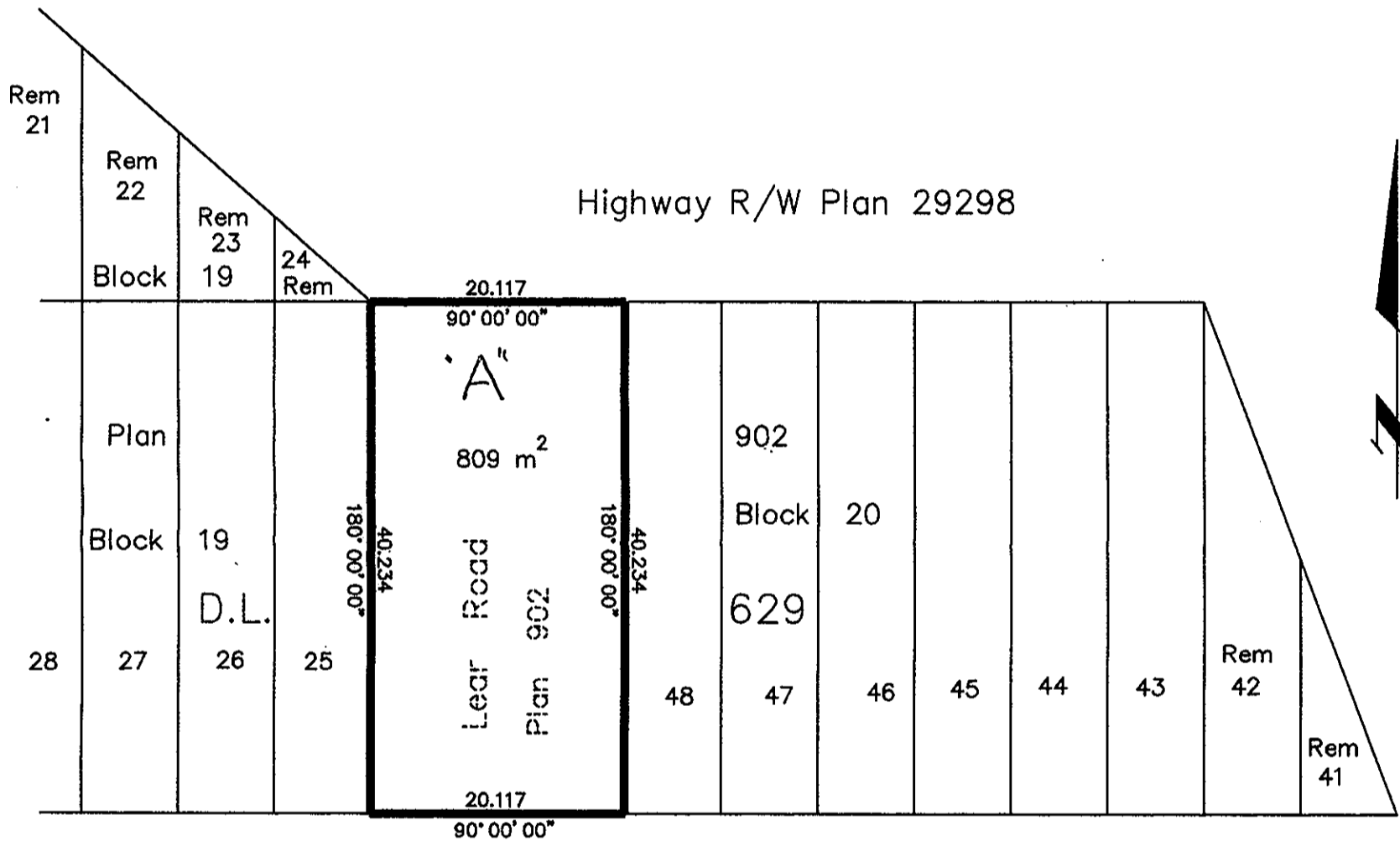
Pursuant to Section 120 of the Land Title Act
 and to Section 541 of the Local Government Act.
 B.C.G.S. 93G.097

REGISTRAR

Scale: 1 : 500 (Distances are in metres)



Bearings are astronomic, derived from
 Plan 902



Piper Road

Block 22	30	23	24	Lot 1 Plan PGP48155	2	3	4	5	6
						Block 29			

Certified Correct, according to
 Land Title Office Records.
 This 8 day of October, 2002.

This plan lies within the Fraser-Fort
 George Regional District.

Gordon Kilbride
 Gordon Kilbride, B.C.L.S.

KILBRIDE LAND SURVEYING LTD.
 British Columbia Land Surveyors
 Prince George, B.C.
 Ph: (250) 562-1196 Fax: 562-3656

F.B.	D.L. 629	File No. 020126R
------	----------	------------------