

REGISTRAR

SUBDIVISION PLAN OF PART OF LOT A, DISTRICT LOT 1599, PLAN 13820, EXCEPT PLANS PGP40103 AND PGP45787 AND PART OF LOT 2, DISTRICT LOT 1599, PLAN 14340, EXCEPT PLAN PGP40103, ALL OF CARIBOO DISTRICT.

B.C.G.S. 93G.086

Scale: 1 : 750 (Distances are in metres)



Grid bearings are derived from observations between control monuments 86H1720 and 86H1722, integrated survey area number 39, City of Prince George, B.C. NAD83(CSRS)

Note: This plan shows ground level measured distances. Prior to computation of U.T.M. co-ordinates multiply by the combined factor 0.9994870

LEGEND

- Standard Iron Post Found
- Standard Iron Post Placed
- ⊙ Control Monument Found

I, Dale Keown, a British Columbia Land Surveyor, of Prince George, in British Columbia, certify that I was present at and personally superintended the survey represented by this plan, and that the survey and plan are correct. The field survey was completed on the 29th day of July, 2005. The plan was completed and checked, and the checklist filed under # 34726, on the 22nd day of July, 2005.

*Dale Keown*  
Dale Keown, B.C.L.S.

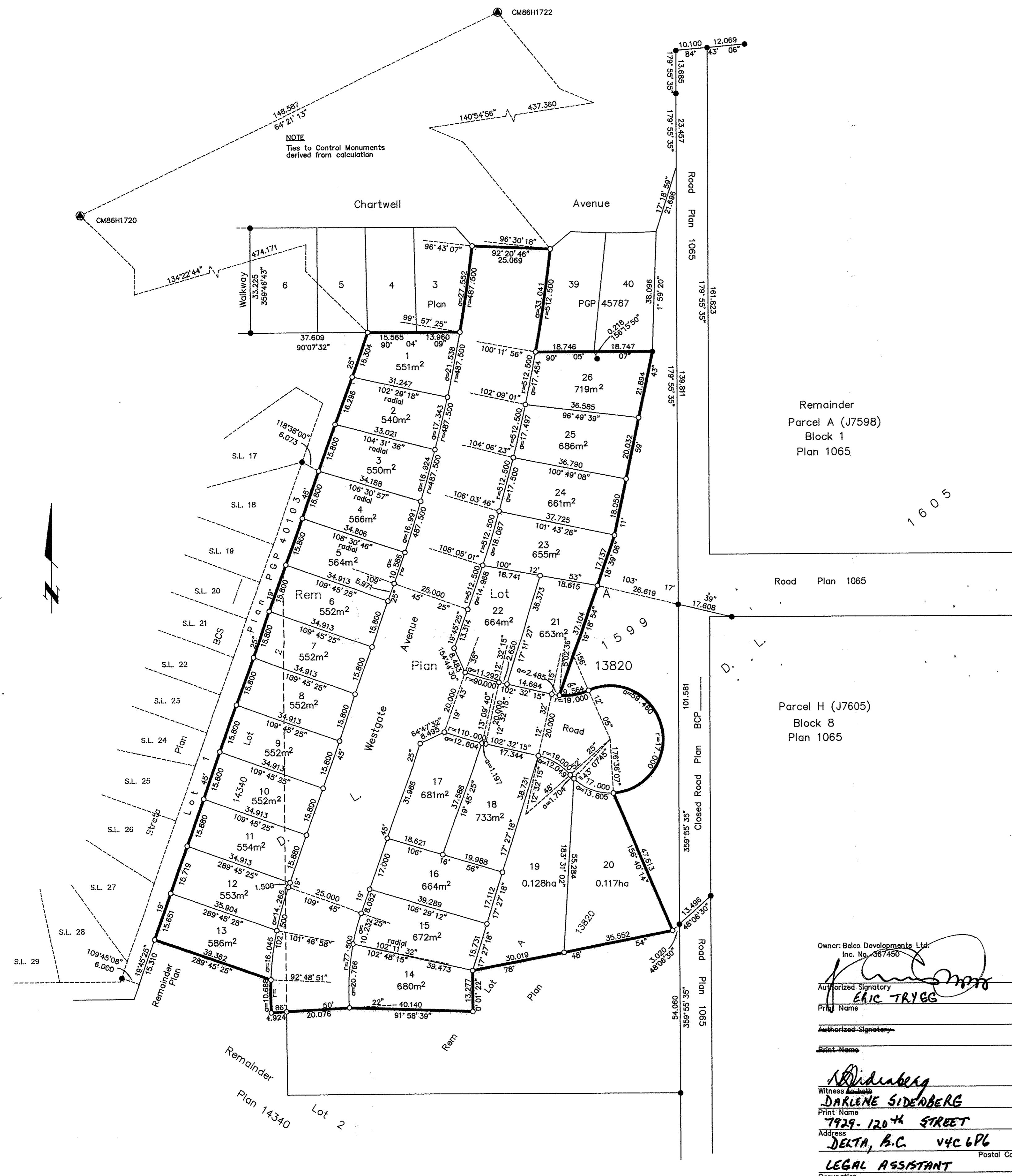
Approved under the Land Title Act this day of Sept 14, 2005

*Alan Clark*  
Approving Officer: ALAN CLARK  
City of Prince George

This plan lies within the Fraser-Fort George Regional District.

KILBRIDE LAND SURVEYING LTD.  
British Columbia Land Surveyors  
Prince George, B.C.  
Ph: (250) 562-1196 Fax: 562-3656

F.B.- HH3-24 D.L.- 1599 File No. - 050232S



Remainder  
Parcel A (J7598)  
Block 1  
Plan 1065

Road Plan 1065

Parcel H (J7605)  
Block 8  
Plan 1065

Owner: Belco Developments Ltd.  
Inc. No. 467450

Authorized Signatory  
*Eric Trygg*  
Eric TRYGG

Authorized Signatory  
Print Name

Witness  
*Darlene Sideberg*  
DARLENE SIDEBERG

Print Name  
7929-120<sup>th</sup> STREET

Address  
DELTA, B.C. V4C 6P6

Postal Code  
LEGAL ASSISTANT

Occupation