

PLAN OF SUBDIVISION OF
 LOTS 1 TO 8, 9 TO 16 AND
 A(58107M) OF BLOCK 234,
 AND LOT 19 AND AMENDED
 LOT 20(54880M) OF BLOCK 233,
 PLAN 1268, AND CLOSED LANE,
 PLAN BCP 1818,
 DISTRICT LOT 343,
 CARIBOO DISTRICT.
 B.C.G.S. 93G.097

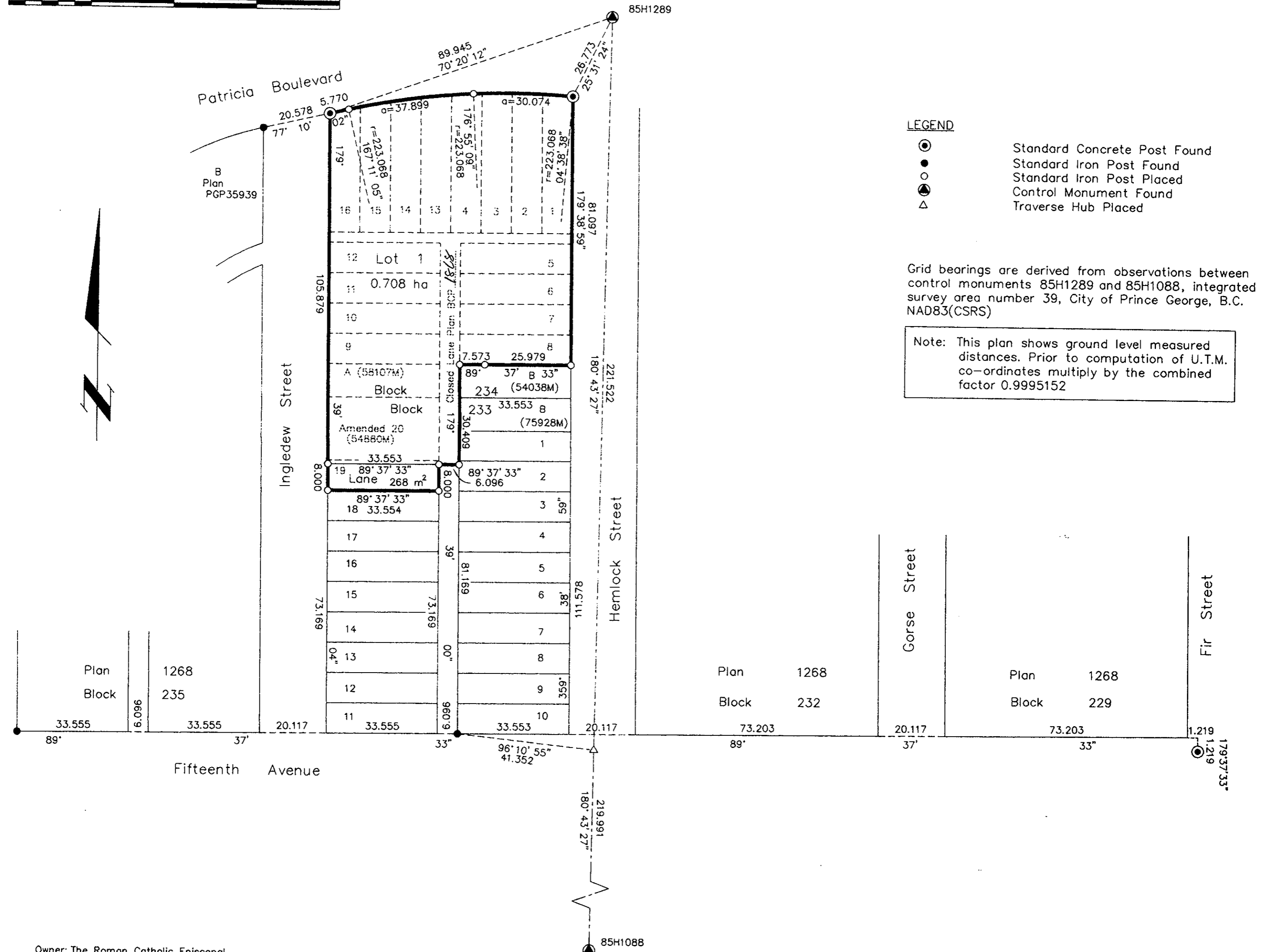
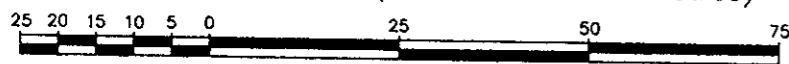
PLAN NO. BCP 01869

Deposited in the Land Title Office at New
 Westminster this 31 day of OCT 2002

BT 400660

REGISTRAR

Scale: 1 : 1000 (Distances are in metres)



LEGEND

- ⊙ Standard Concrete Post Found
- Standard Iron Post Found
- ⊙ Standard Iron Post Placed
- ⊙ Control Monument Found
- △ Traverse Hub Placed

Grid bearings are derived from observations between control monuments 85H1289 and 85H1088, integrated survey area number 39, City of Prince George, B.C. NAD83(CSRS)

Note: This plan shows ground level measured distances. Prior to computation of U.T.M. co-ordinates multiply by the combined factor 0.9995152

Owner: The Roman Catholic Episcopal Corporation of Prince Rupert

Hazel Dalton
 Authorized Signatory

HAZEL DALTON
 Print Name

Authorized Signatory

Print Name

Witness to both

GARY R. BROWN
 Print Name

1598 6th AVENUE
 Address

PRINCE GEORGE, B.C. V2L 5G7
 Postal Code

Solicitor
 Occupation

Approved under the Land Title Act this 28th day of October, 2002

Kris Kilbride
 Approving Officer
 City of Prince George

I, Gordon Kilbride, a British Columbia Land Surveyor, of Prince George, in British Columbia, certify that I was present at and personally superintended the survey represented by this plan, and that the survey and plan are correct. The survey was completed on the 11 day of August, 2000.

Gordon Kilbride
 Gordon Kilbride, B.C.L.S.

This plan lies within the Fraser-Fort George Regional District.

KILBRIDE LAND SURVEYING LTD. British Columbia Land Surveyors Prince George, B.C. Ph: (250) 562-1196 Fax: 562-3656		
F.B.- RA	D.L.- 343(233)	File No. - 000 188S