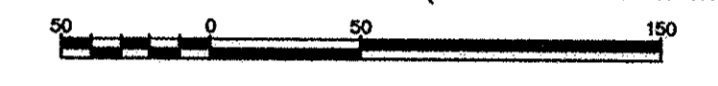


REGISTRAR
REF. # BX 545563

REFERENCE PLAN OF ROAD THROUGH PART OF THE SW 1/4 OF DISTRICT LOT 2426, CARIBOO DISTRICT. Pursuant to Section 107 of the Land Title Act.

B.C.G.S. 93J.006

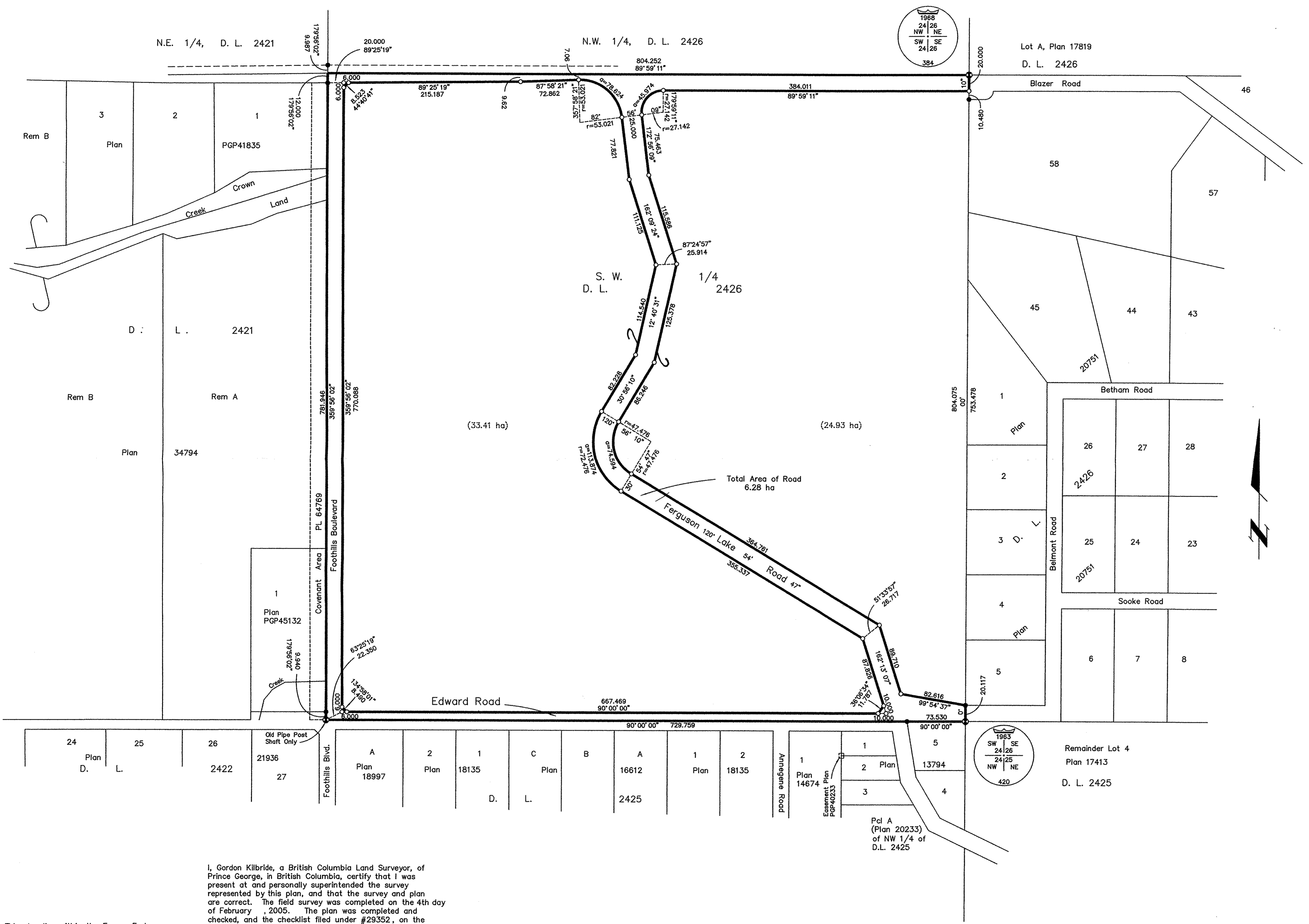
Scale: 1 : 2500 (Distances are in metres)



Bearings are astronomic, derived from Plan 18997 - N. Bdy of DL 2425 = 90°00'00"

LEGEND

- ⊙ Standard Capped Post Found
- Standard Iron Post Found
- Standard Iron Post Placed



I, Gordon Kilbride, a British Columbia Land Surveyor, of Prince George, in British Columbia, certify that I was present at and personally superintended the survey represented by this plan, and that the survey and plan are correct. The field survey was completed on the 4th day of February, 2005. The plan was completed and checked, and the checklist filed under #29352, on the 4th day of April, 2005.

Gordon Kilbride
Gordon Kilbride, B.C.L.S.

Approved under the Land Title Act this 11th day of April 2005
[Signature]
Approving Officer
City of Prince George

Re-Approved this 2nd day of June 2005
[Signature]
Approving Officer
City of Prince George

I hereby certify that this is the Official Plan of the right of way shown outlined hereon.
[Signature]
Surveyor General
Victoria, B.C. JUNE 23, 2005
File: 7406968

This plan lies within the Fraser-Fort George Regional District.
KILBRIDE LAND SURVEYING LTD.
British Columbia Land Surveyors
Prince George, B.C.
Ph: (250) 562-1196 Fax: 562-3656
F.B.- XK20 D.L.- 2426 File No. -050031