

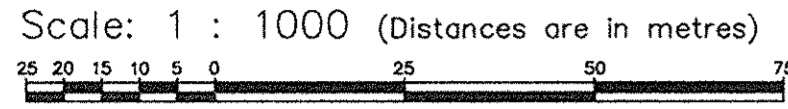
PLAN OF SUBDIVISION OF PART  
OF PARCEL 1, DISTRICT LOT 2508,  
CARIBOO DISTRICT, PLAN PGP43028,  
EXCEPT PLAN PGP47540.  
B.C.G.S. 93G.096

Grid bearings are derived from observations between control monuments 85H1206 and 85H1310 integrated survey area number 39, City of Prince George, B.C. NAD83(CSRS)

PLAN NO. BCP 17447

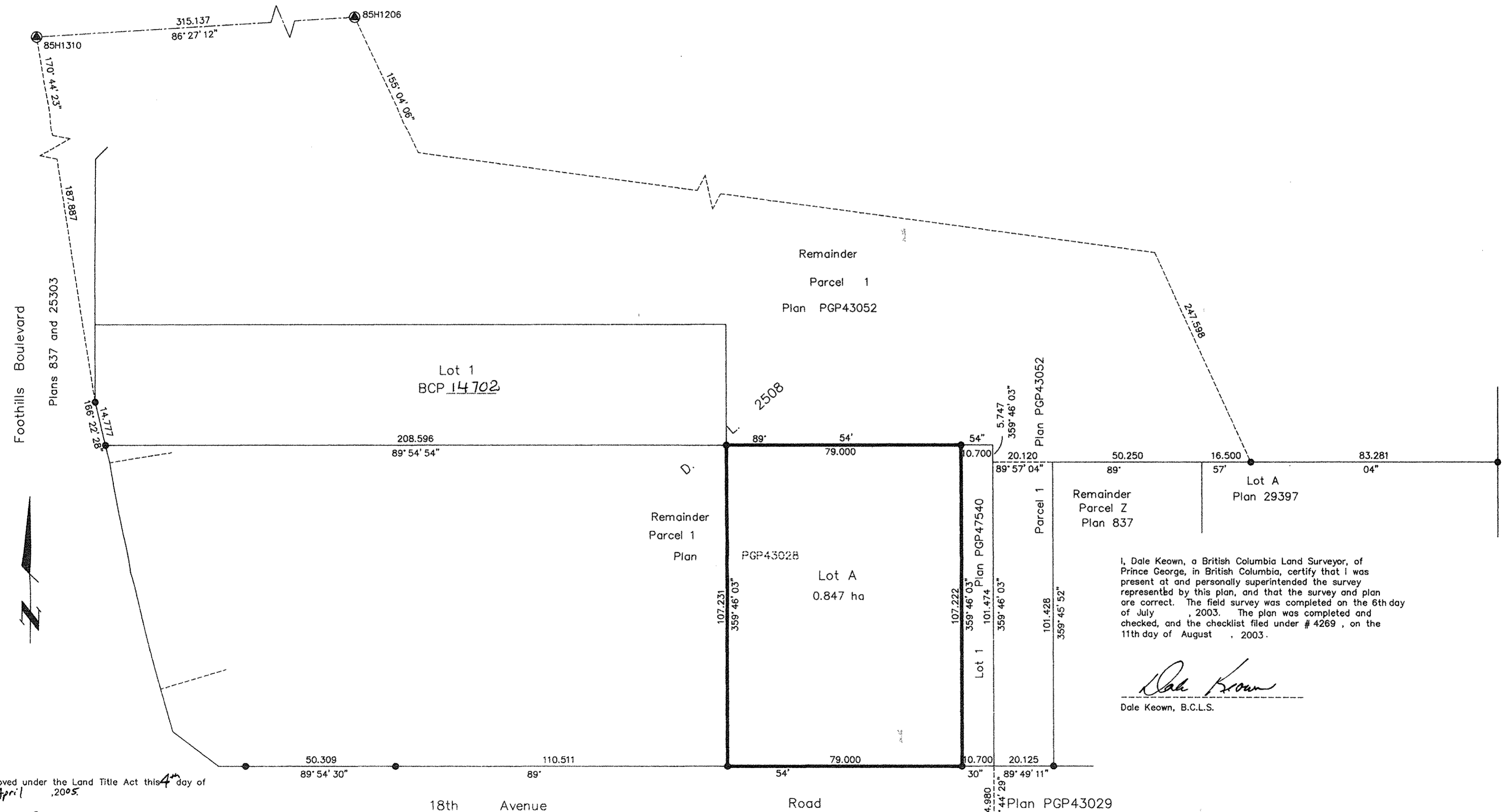
Deposited in the Land Title Office at New Westminster this 9 day of *May* 2005.

Note: This plan shows ground level measured distances. Prior to computation of U.T.M. co-ordinates multiply by the combined factor 0.99950925



LEGEND  
● Standard Iron Post Found  
⊙ Control Monument Found

REGISTRAR *BX 529614*



I, Dale Keown, a British Columbia Land Surveyor, of Prince George, in British Columbia, certify that I was present at and personally supervised the survey represented by this plan, and that the survey and plan are correct. The field survey was completed on the 6th day of July, 2003. The plan was completed and checked, and the checklist filed under # 4269, on the 11th day of August, 2003.

*Dale Keown*  
Dale Keown, B.C.L.S.

Approved under the Land Title Act this 4<sup>th</sup> day of April, 2005.

*[Signature]*  
Approving Officer  
City of Prince George

**KILBRIDE LAND SURVEYING LTD.**  
British Columbia Land Surveyors  
Prince George, B.C.  
Ph: (250) 562-1196 Fax: 562-3656  
F.B.- XE06 D.L.- 2508 File No. - 030094A

Rem Lot 6	Rem W 1/2 Lot	Rem E 1/2 Block Plan	Rem W 1/2 Lot	Rem E 1/2 Lot	Remainder Parcel Z Plan 837
		5	9	4	
		837			

This plan lies within the Fraser-Fort George Regional District.

I hereby certify that this is the Official Plan of the lands shown outlined hereon.

ORIGINAL SIGNED BY  
**JEFF BEDDOES**  
FOR Surveyor General  
Victoria, B.C. **MAY - 2 2005**

*FILE 7407707 SID 805938*