

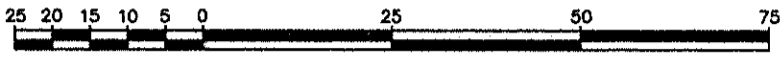
REFERENCE PLAN OF
 EASEMENT OVER LOT 1,
 PLAN 9047 AND LOT 2,
 PLAN 29878, DISTRICT
 LOT 823, CARIBOO DISTRICT.
 Pursuant to Section 99 of
 the Land Title Act.
 B.C.G.S. 93G.097

PLAN NO. BCP-16504

Deposited in the Land Title Office at New
 Westminster this 22 day of *Mar.* 2005.

REGISTRAR *Bx 218534*

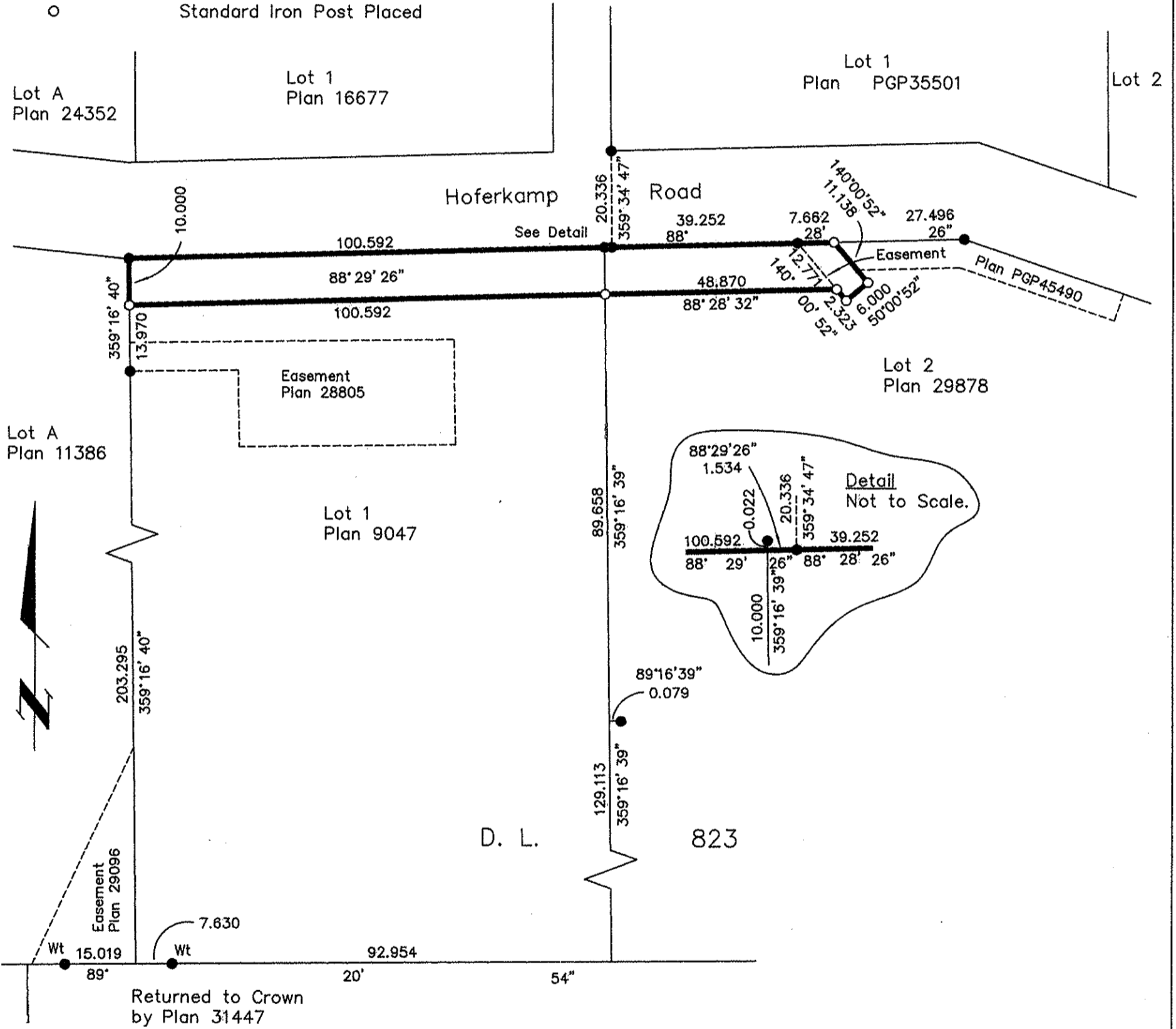
Scale: 1 : 1000 (Distances are in metres)



Bearings are astronomic, derived from
 West Bdy of Lot 1, Plan 9047 = 359°16'40"
 as shown on Plan 28805

LEGEND

- Standard Iron Post Found
- Standard Iron Post Placed



I, Gordon Kilbride, a British Columbia Land Surveyor, of
 Prince George, in British Columbia, certify that I was
 present at and personally supervised the survey
 represented by this plan, and that the survey and plan
 are correct. The field survey was completed on the 24 day
 of January, 2005. The plan was completed and
 checked, and the checklist filed under # 26742, on the
 27 day of January, 2005.

Gordon Kilbride
 Gordon Kilbride, B.C.L.S.

BOOK OF REFERENCE	
DESCRIPTION	AREA
Lot 1, Plan 9047,	0.101 ha
Lot 2, Plan 29878,	529 m ²

This plan lies within the Fraser-Fort
 George Regional District.

KILBRIDE LAND SURVEYING LTD.
 British Columbia Land Surveyors
 Prince George, B.C.
 Ph: (250) 562-1196 Fax: 562-3656

F.B.- XK18	D.L.- 823	File No. -050007
------------	-----------	------------------