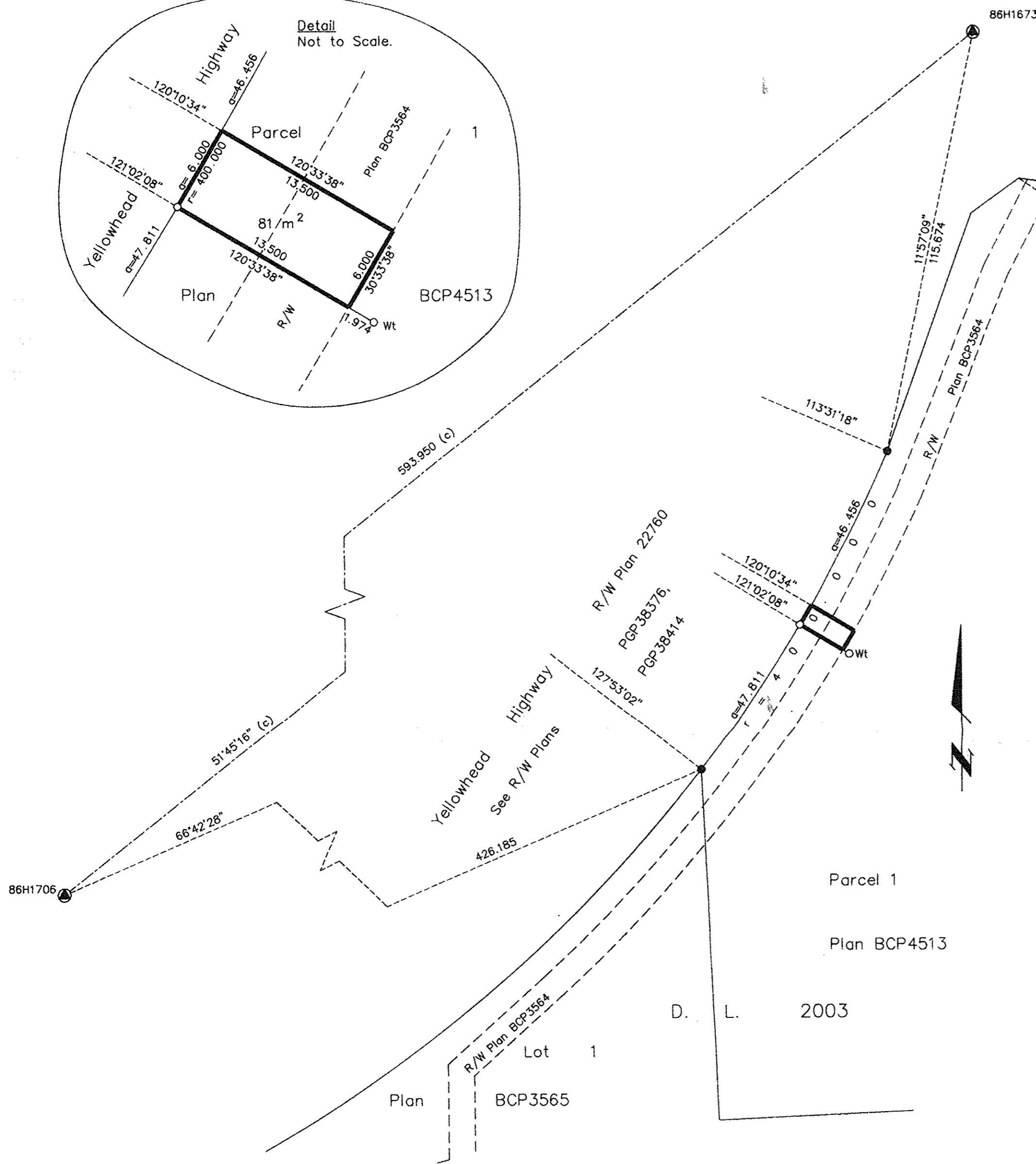
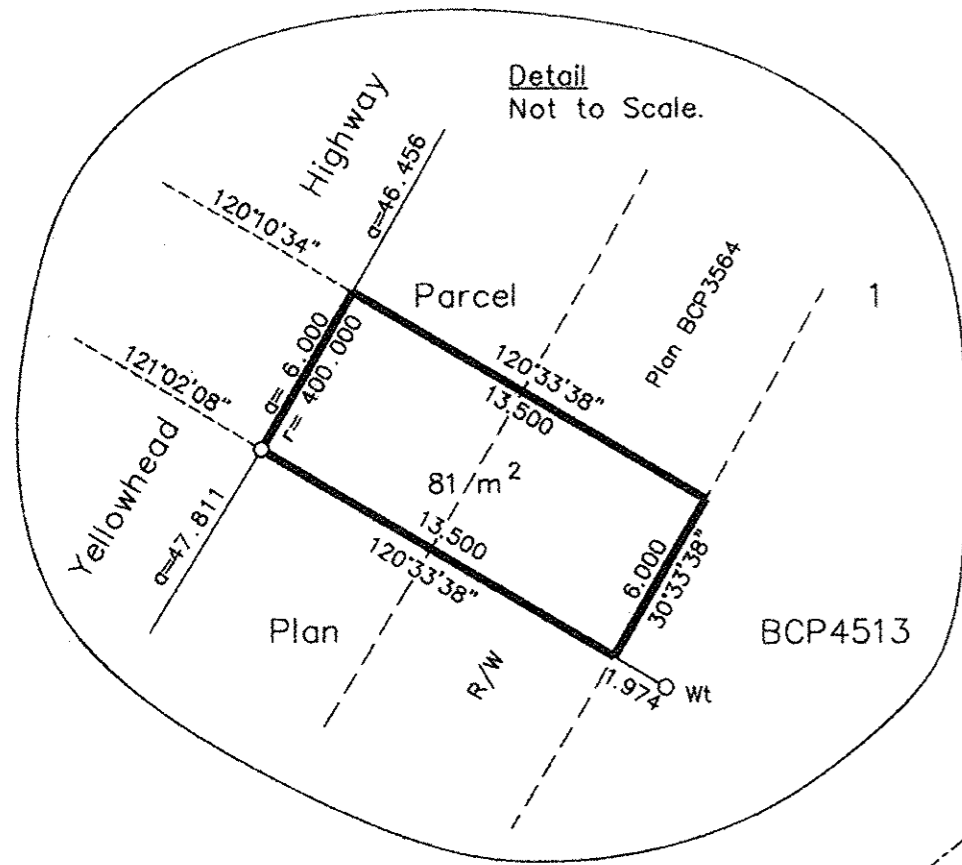


Deposited in the Land Title Office at New Westminster this 7 day of March 2005.

REGISTRAR

B7515924



REFERENCE PLAN OF EASEMENT WITHIN PARCEL 1, DISTRICT LOT 2003, CARIBOO DISTRICT PLAN BCP4513.

Pursuant to Section 99 of the Land Title Act.
B.C.G.S. 93G.097

Scale: 1 : 1000 (Distances are in metres)



Grid bearings are derived from observations between control monuments 86H1706 and 86H1673, integrated survey area number 39, City of Prince George, B.C. NAD83(CSRS)

Note: This plan shows ground level measured distances. Prior to computation of U.T.M. co-ordinates multiply by the combined factor 0.9995026

LEGEND

- Standard Iron Post Found
- Standard Iron Post Placed
- ⊙ Control Monument Found

I, Dale Keown, a British Columbia Land Surveyor, of Prince George, in British Columbia, certify that I was present at and personally superintended the survey represented by this plan, and that the survey and plan are correct. The field survey was completed on the 8th day of June, 2004. The plan was completed and checked, and the checklist filed under #16625, on the 13th day of June, 2004.

Dale Keown
Dale Keown, B.C.L.S.

This plan lies within the Fraser-Fort George Regional District.

KILBRIDE LAND SURVEYING LTD. British Columbia Land Surveyors Prince George, B.C. Ph: (250) 562-1196 Fax: 562-3656		
F.B.- RA	D.L.- 2003	File No. -040115