

Deposited in the Land Title Office at New Westminster this 18 day of OCT. 2004.

REGISTRAR BW 479265

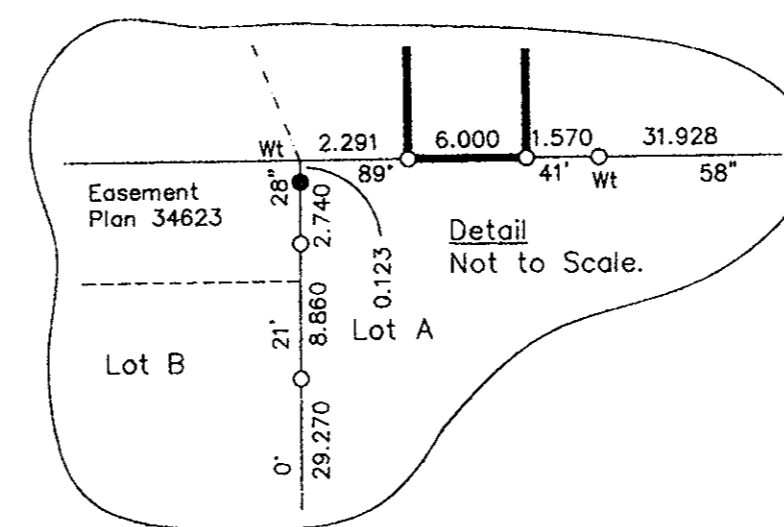
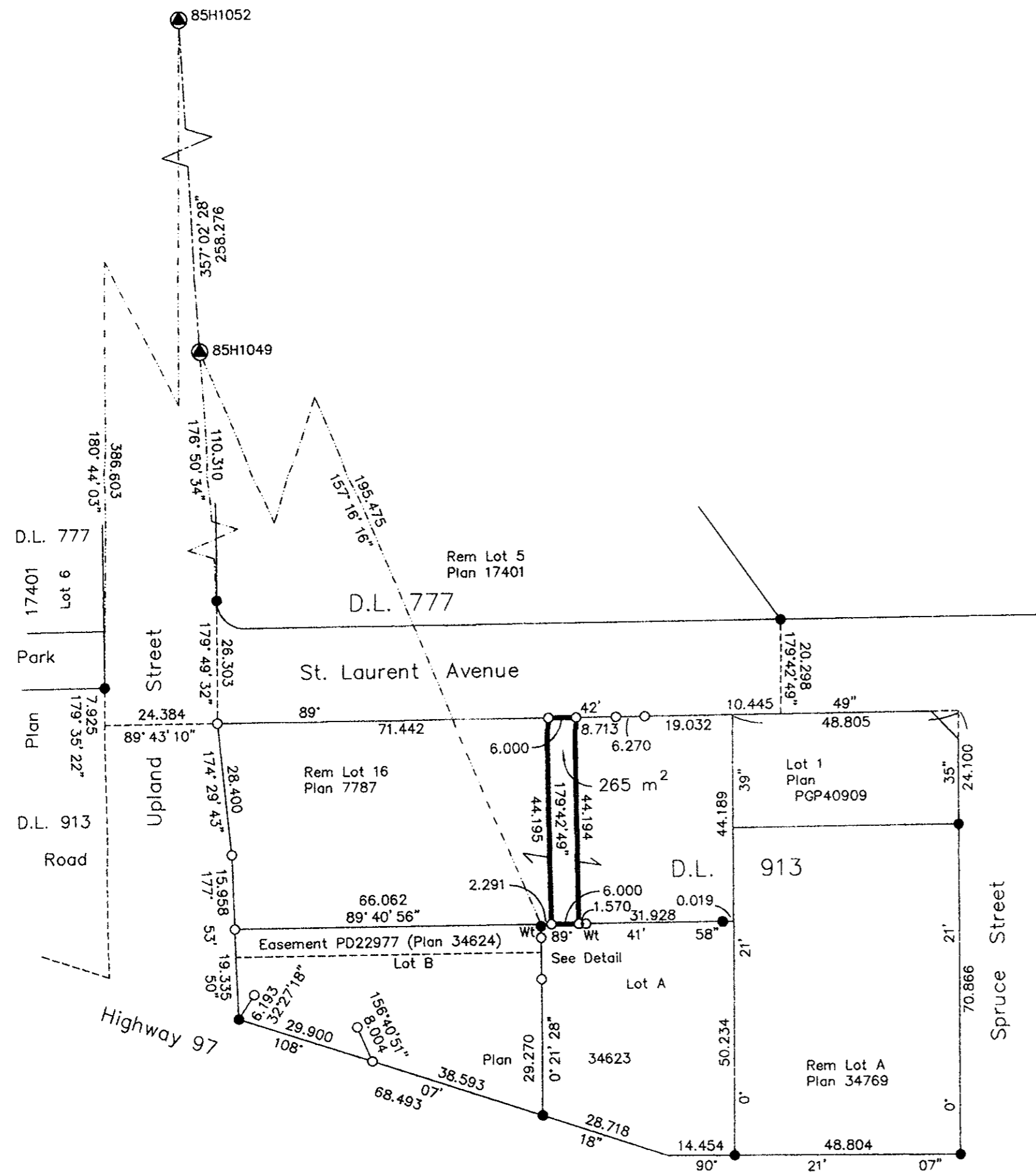
REFERENCE PLAN OF EASEMENT OVER PART OF LOT 16, DISTRICT LOT 913, CARIBOO DISTRICT, PLAN 7787, EXCEPT PLANS 21816, 32610 AND 34769. Pursuant to Section 99 of the Land Title Act. B.C.G.S. 93G.097

Scale: 1 : 1000 (Distances are in metres)

- LEGEND**
- Standard Iron Post Found
  - Standard Iron Post Placed
  - ⊙ Control Monument Found

Grid bearings are derived from observations between control monuments 85H1049 and 85H1052, integrated survey area number 39, City of Prince George, B.C. NAD83(CSRS)

Note: This plan shows ground level measured distances. Prior to computation of U.T.M. co-ordinates multiply by the combined factor 0.9995135



I, Gordon Kilbride, a British Columbia Land Surveyor, of Prince George, in British Columbia, certify that I was present at and personally superintended the survey represented by this plan, and that the survey and plan are correct. The field survey was completed on the 29 day of September, 2004. The plan was completed and checked, and the checklist filed under #21828, on the 1 day of October, 2004.

*Gordon Kilbride*  
Gordon Kilbride, B.C.L.S.

This plan lies within the Fraser-Fort George Regional District.

|   |           |                    |
|---|-----------|--------------------|
| <b>KILBRIDE LAND SURVEYING LTD.</b><br>British Columbia Land Surveyors<br>Prince George, B.C.<br>Ph: (250) 562-1196 Fax: 562-3656 |           |                    |
| F.B.- XE24  | D.L.- 913 | File No. - 040230A |