

PLAN NO. BCP 13810

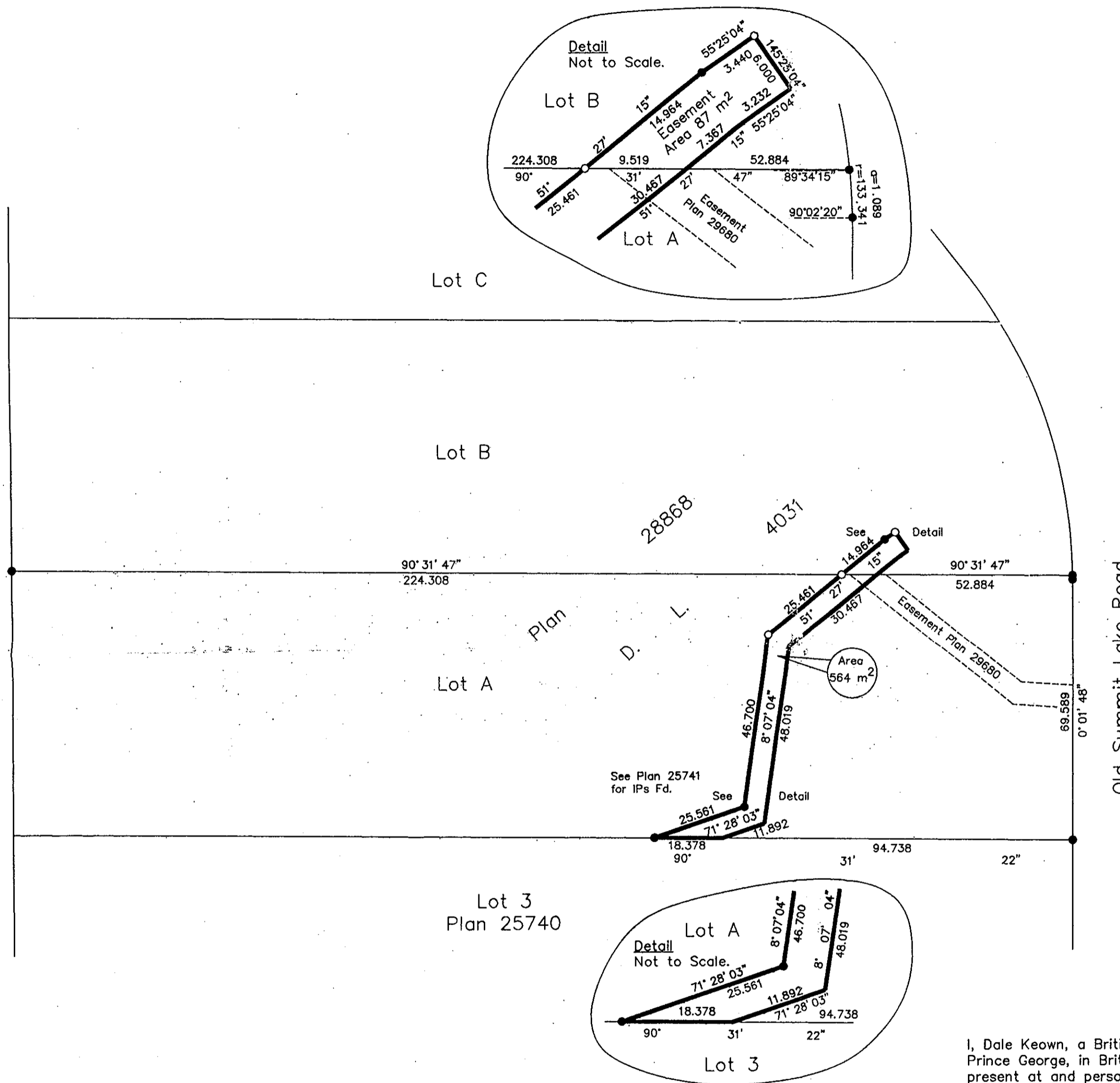
Deposited in the Land Title Office at New Westminster this 8th day of October 2004.

DEPUTY REGISTRAR *Brian Bigrao* per *am*

Ref. BW469020



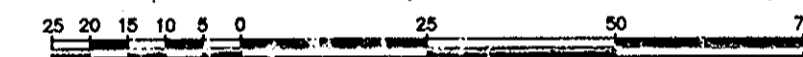
Rem B
Plan 19629



REFERENCE PLAN OF EASEMENT
WITHIN LOTS A AND B, DISTRICT
LOT 4031, CARIBOO DISTRICT,
PLAN 28868.
Pursuant to Section 99
of the Land Title Act.

B.C.G.S. 93J.007

Scale: 1 : 1000 (Distances are in metres)



Bearings are astronomic, derived from
Plan 28868 = 90°31'47\"/>

LEGEND

- Standard Iron Post Found
- Standard Iron Post Placed

BOOK OF REFERENCE	
DESCRIPTION	AREA
Lot A, D.L. 4031, Cariboo District, Plan 28868.	564 m ²
Lot B, D.L. 4031, Cariboo District, Plan 28868.	87 m ²

I, Dale Keown, a British Columbia Land Surveyor, of Prince George, in British Columbia, certify that I was present at and personally superintended the survey represented by this plan, and that the survey and plan are correct. The field survey was completed on the 15 day of September, 2004. The plan was completed and checked, and the checklist filed under #21994, on the 5th day of October, 2004.

Dale Keown
Dale Keown, B.C.L.S.

This plan lies within the Fraser-Fort George Regional District.

KILBRIDE LAND SURVEYING LTD. British Columbia Land Surveyors Prince George, B.C. Ph: (250) 562-1196 Fax: 562-3656		
F.B.- XM 1	D.L.- 4031	File No. - 040251