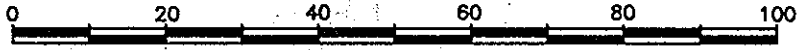


REFERENCE PLAN OF
EASEMENT THROUGH
LOT 1, PLAN BCP_1370
DISTRICT LOT 1432
CARIBOO DISTRICT

PLAN No. BCP _____
DEPOSITED IN THE LAND TITLE OFFICE
AT NEW WESTMINSTER, B.C., THIS 2
DAY OF OCT, 2002

B.G.C.S. 93G.087
PURSUANT TO SECTION 99 OF THE LAND TITLE ACT.

REGISTRAR



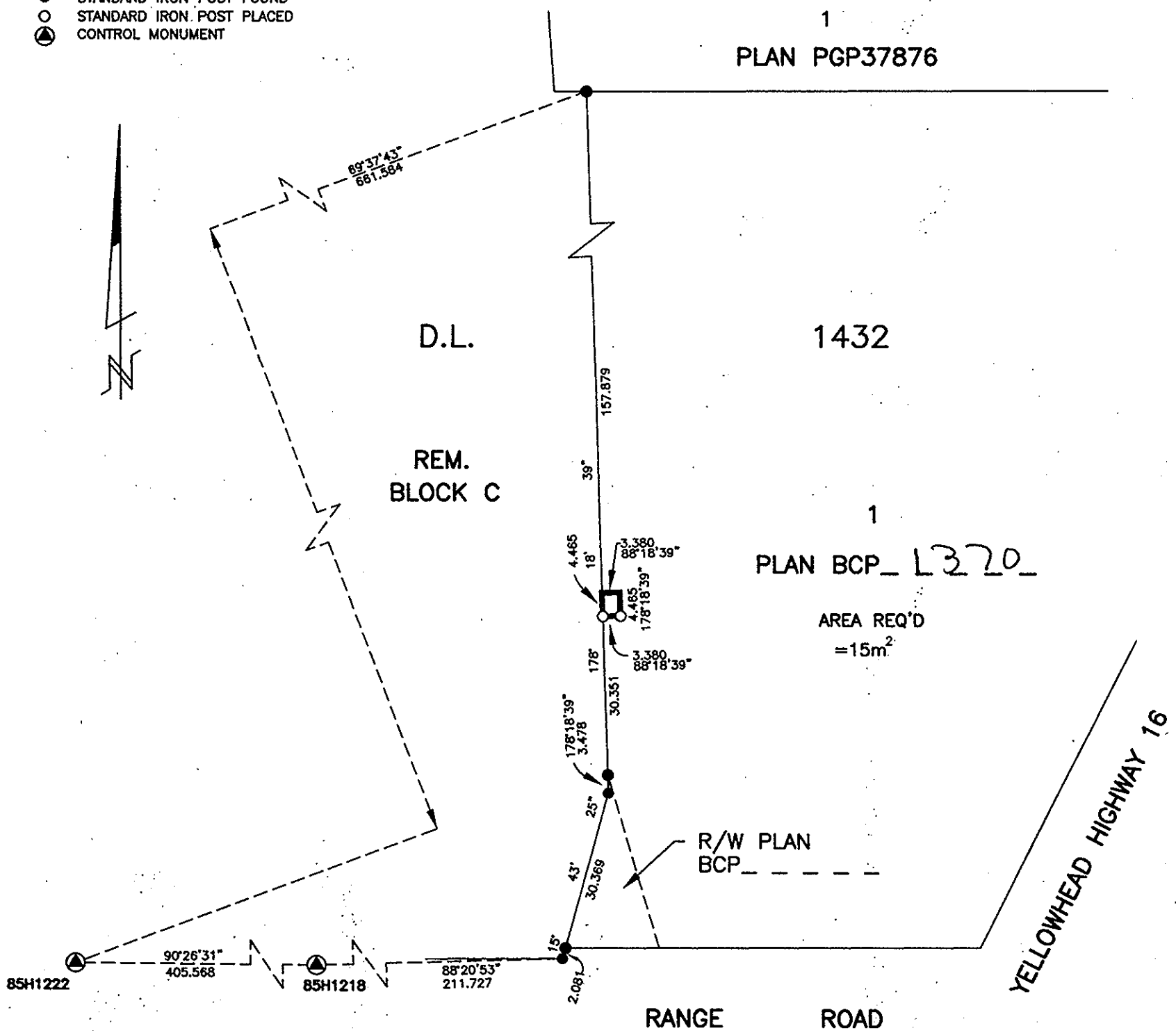
SCALE= 1 : 1000
ALL DISTANCES SHOWN ARE IN METRES.

THIS PLAN SHOWS GROUND-LEVEL MEASURED DISTANCES.
PRIOR TO COMPUTATION OF U.T.M. COORDINATES, MULTIPLY
BY COMBINED FACTOR 0.9995128.

GRID BEARINGS ARE DERIVED FROM OBSERVATIONS
BETWEEN CONTROL MONUMENTS 85H1218, AND 85H1222,
INTEGRATED SURVEY AREA NUMBER 39, PRINCE GEORGE.

LEGEND

- STANDARD IRON POST FOUND
- STANDARD IRON POST PLACED
- ⊙ CONTROL MONUMENT



I, RONALD L. JOHNS, A BRITISH COLUMBIA LAND SURVEYOR, OF PRINCE GEORGE, IN BRITISH COLUMBIA, CERTIFY THAT I WAS PRESENT AT AND PERSONALLY SUPERINTENDED THE SURVEY REPRESENTED BY THIS PLAN AND THAT THE SURVEY AND PLAN ARE CORRECT. THE SURVEY WAS COMPLETED ON THE 6TH DAY OF AUGUST, 2002.

THIS PLAN LIES WITHIN THE FRASER-FORT GEORGE REGIONAL DISTRICT.

R.L. Johns
R.L. JOHNS, B.C.L.S., C.L.S.

R. L. JOHNS LAND SURVEYING LTD.
LEGAL AND ENGINEERING SURVEYS
240 VICTORIA STREET
PRINCE GEORGE, B. C. V2L 2J4
PHONE: (250)562-5759
FAX: (250)562-5703