

REFERENCE PLAN OF STATUTORY
 RIGHT OF WAY THROUGH
 LOT 1, PLAN BCP_1370_ _ _
 DISTRICT LOT 1432
 CARIBOO DISTRICT

PLAN No. BCP 01371
 BT361943
 DEPOSITED IN THE LAND TITLE OFFICE
 AT NEW WESTMINSTER, B.C., THIS 2 _ _
 DAY OF OCT _ _ _ , 2002.

B.G.C.S. 93G.087
 PURSUANT TO SECTION 113 OF THE LAND TITLE ACT.

REGISTRAR



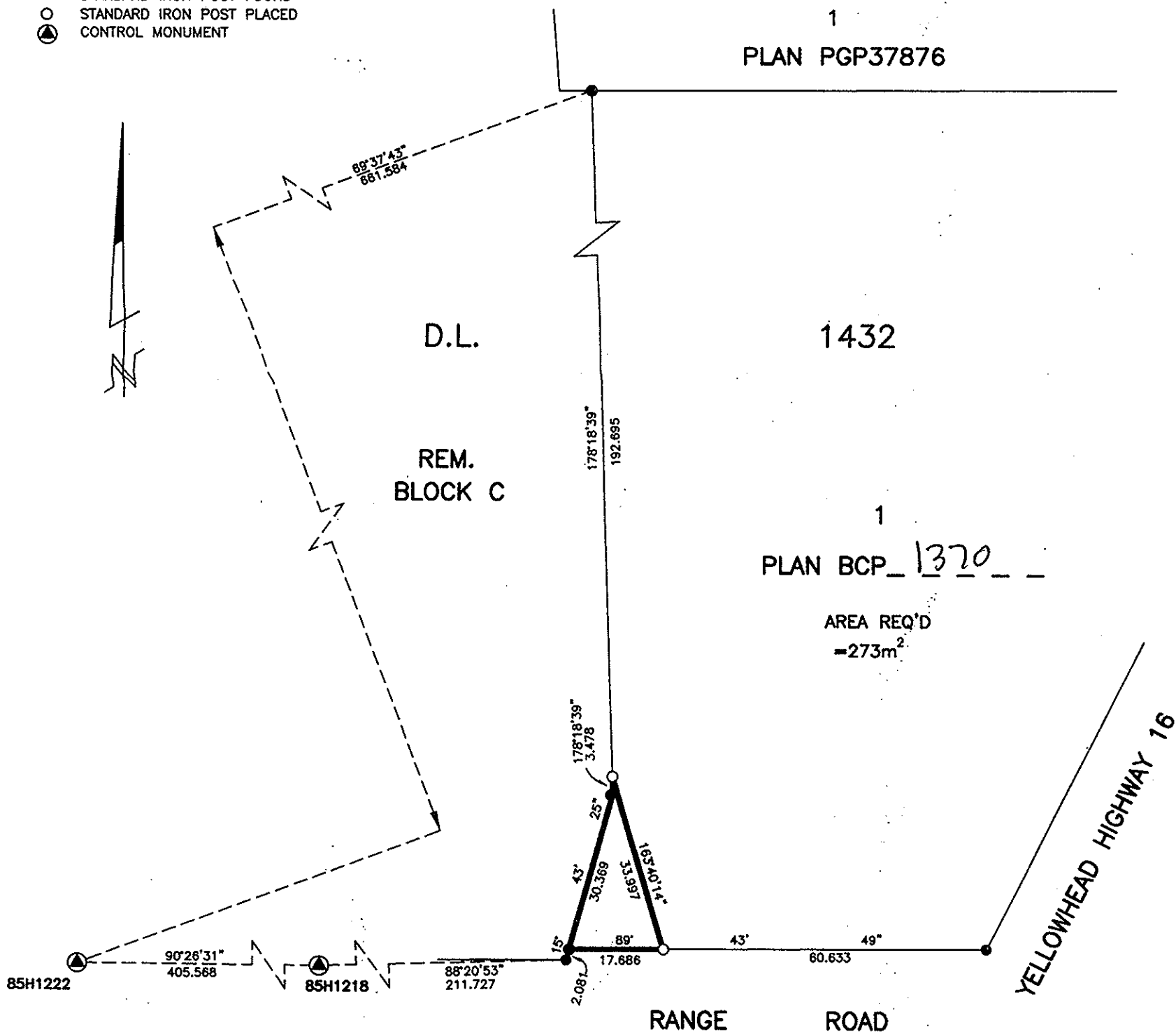
SCALE= 1 : 1000
 ALL DISTANCES SHOWN ARE IN METRES.

THIS PLAN SHOWS GROUND-LEVEL MEASURED DISTANCES.
 PRIOR TO COMPUTATION OF U.T.M. COORDINATES, MULTIPLY
 BY COMBINED FACTOR 0.9995128.

GRID BEARINGS ARE DERIVED FROM OBSERVATIONS
 BETWEEN CONTROL MONUMENTS 85H1218, AND 85H1222,
 INTEGRATED SURVEY AREA NUMBER 39, PRINCE GEORGE.

LEGEND

- STANDARD IRON POST FOUND
- STANDARD IRON POST PLACED
- ▲ CONTROL MONUMENT



I, RONALD L. JOHNS, A BRITISH COLUMBIA LAND
 SURVEYOR, OF PRINCE GEORGE, IN BRITISH COLUMBIA,
 CERTIFY THAT I WAS PRESENT AT AND PERSONALLY
 SUPERINTENDED THE SURVEY REPRESENTED BY THIS
 PLAN AND THAT THE SURVEY AND PLAN ARE CORRECT.
 THE SURVEY WAS COMPLETED ON THE 6TH DAY OF
 AUGUST, 2002.

THIS PLAN LIES WITHIN THE FRASER-
 FORT GEORGE REGIONAL DISTRICT.

R. L. JOHNS LAND SURVEYING LTD.
 LEGAL AND ENGINEERING SURVEYS
 240 VICTORIA STREET
 PRINCE GEORGE, B. C. V2L 2J4
 PHONE: (250)562-5759
 FAX: (250)562-5703

R.L. Johns
 R.L. JOHNS, B.C.L.S., C.L.S.

2002058R BB4-15-17