

PLAN OF SUBDIVISION OF PART OF REM. BLOCK C
DISTRICT LOT 1432
AND PART OF REM. E. 1/2
DISTRICT LOT 8181
CARIBOO DISTRICT

PLAN No. BCP - 01370

81361947
DEPOSITED IN THE LAND TITLE OFFICE
AT NEW WESTMINSTER, B.C., THIS 2nd DAY OF OCT 20 02

B.G.C.S. 93G.087

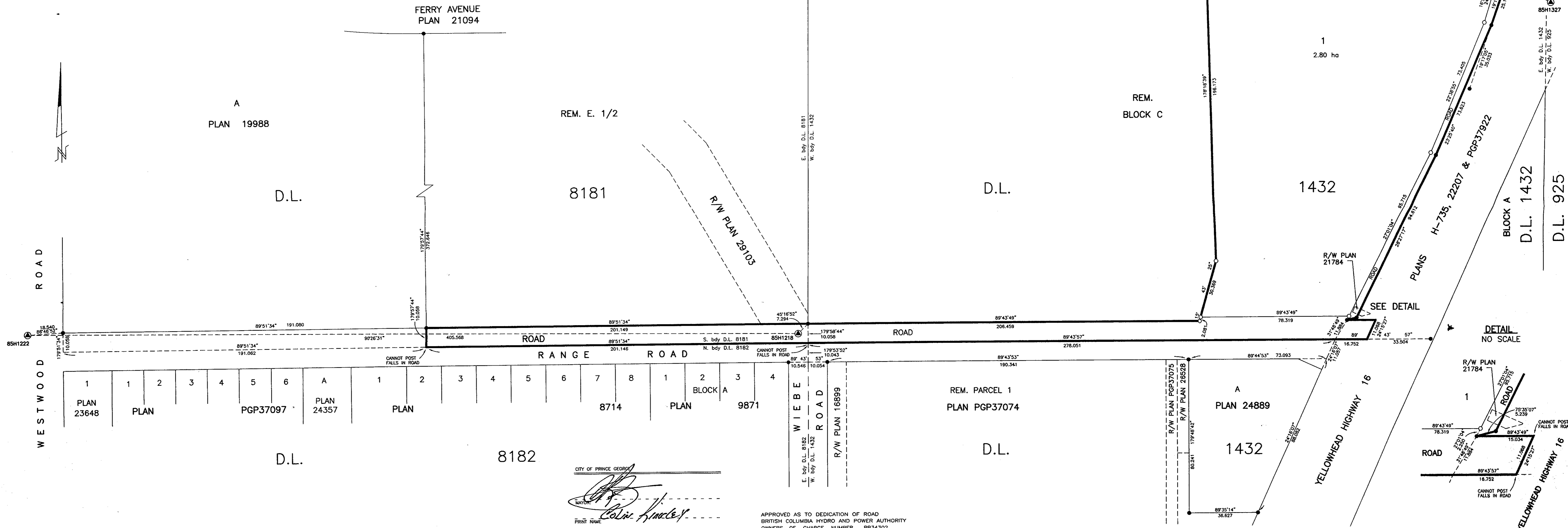


SCALE= 1 : 1000
ALL DISTANCES SHOWN ARE IN METRES.

THIS PLAN SHOWS GROUND-LEVEL MEASURED DISTANCES.
PRIOR TO COMPUTATION OF U.T.M. COORDINATES, MULTIPLY
BY COMBINED FACTOR 0.9995128.
GRID BEARINGS ARE DERIVED FROM OBSERVATIONS
BETWEEN CONTROL MONUMENTS 85H1218 AND 85H1222.
INTEGRATED SURVEY AREA NUMBER 39, PRINCE GEORGE.

LEGEND

- STANDARD IRON POST FOUND
- STANDARD IRON POST PLACED
- ⊙ CONTROL MONUMENT



I, RONALD L. JOHNS, A BRITISH COLUMBIA LAND SURVEYOR, OF PRINCE GEORGE, IN BRITISH COLUMBIA, CERTIFY THAT I WAS PRESENT AT AND PERSONALLY SUPERINTENDED THE SURVEY REPRESENTED BY THIS PLAN AND THAT THE SURVEY AND PLAN ARE CORRECT. THE SURVEY WAS COMPLETED ON THE 6TH DAY OF AUGUST, 2002.

R. L. Johns
R.L. JOHNS, B.C.L.S., C.L.S.

CITY OF PRINCE GEORGE

Colin Kinley
MAYOR

Jan Petrella
CLERK

Glenna Moore
WITNESS (AS TO BOTH SIGNATURES)

Princa George, B.C.
ADDRESS

Administration Clerk
OCCUPATION

APPROVED AS TO DEDICATION OF ROAD
BRITISH COLUMBIA HYDRO AND POWER AUTHORITY
OWNERS OF CHARGE NUMBER FP24302
BY ITS ATTORNEYS IN FACT. (D.F. 2128242)

Aki Jukka Lintunen
AKI JUKKA LINTUNEN

Damian Joseph Dunne
DAMIAN JOSEPH DUNNE

Shirley Mansfield
SHIRLEY MANSFIELD

8th FLOOR - 333 DUNSMUIR STREET
VANCOUVER, B.C.
V6B 3R3

LEGAL SERVICES SECRETARY

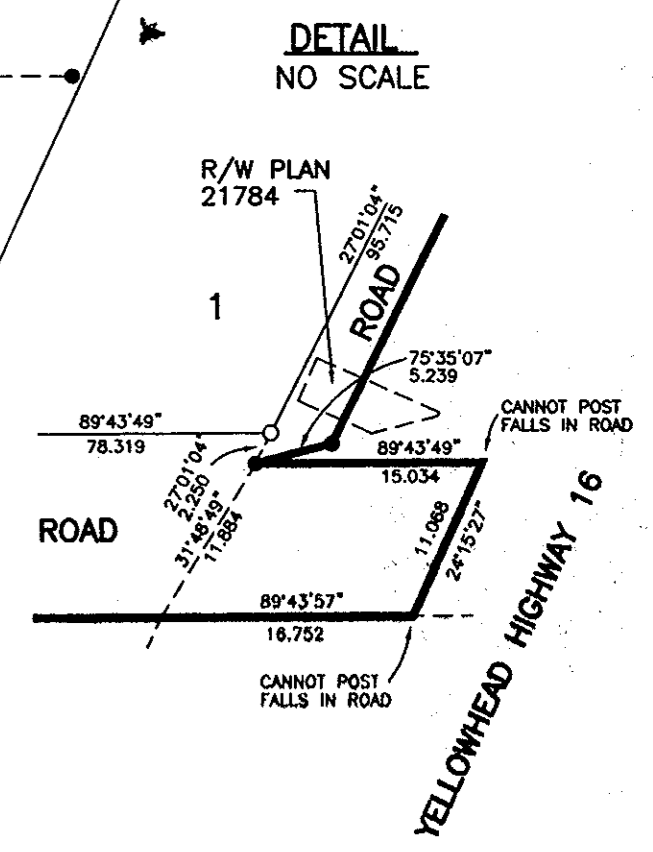


APPROVED UNDER THE LAND TITLE ACT
THIS 1st DAY OF OCTOBER 20 02

David Fraser
APPROVING OFFICER, CITY OF PRINCE GEORGE.

APPROVED UNDER THE LAND TITLE ACT
THIS 14th DAY OF AUGUST 20 02

M. G. B...
APPROVING OFFICER, MINISTRY OF TRANSPORTATION



THIS PLAN LIES WITHIN THE FRASER-FORT GEORGE REGIONAL DISTRICT.

R. L. JOHNS LAND SURVEYING LTD.
LEGAL AND ENGINEERING SURVEYS
240 VICTORIA STREET
PRINCE GEORGE, B. C. V2L 2J4
PHONE: (250)562-5758
FAX: (250)562-5703

20020585 BB4-15-17

MAT 3-00-1400