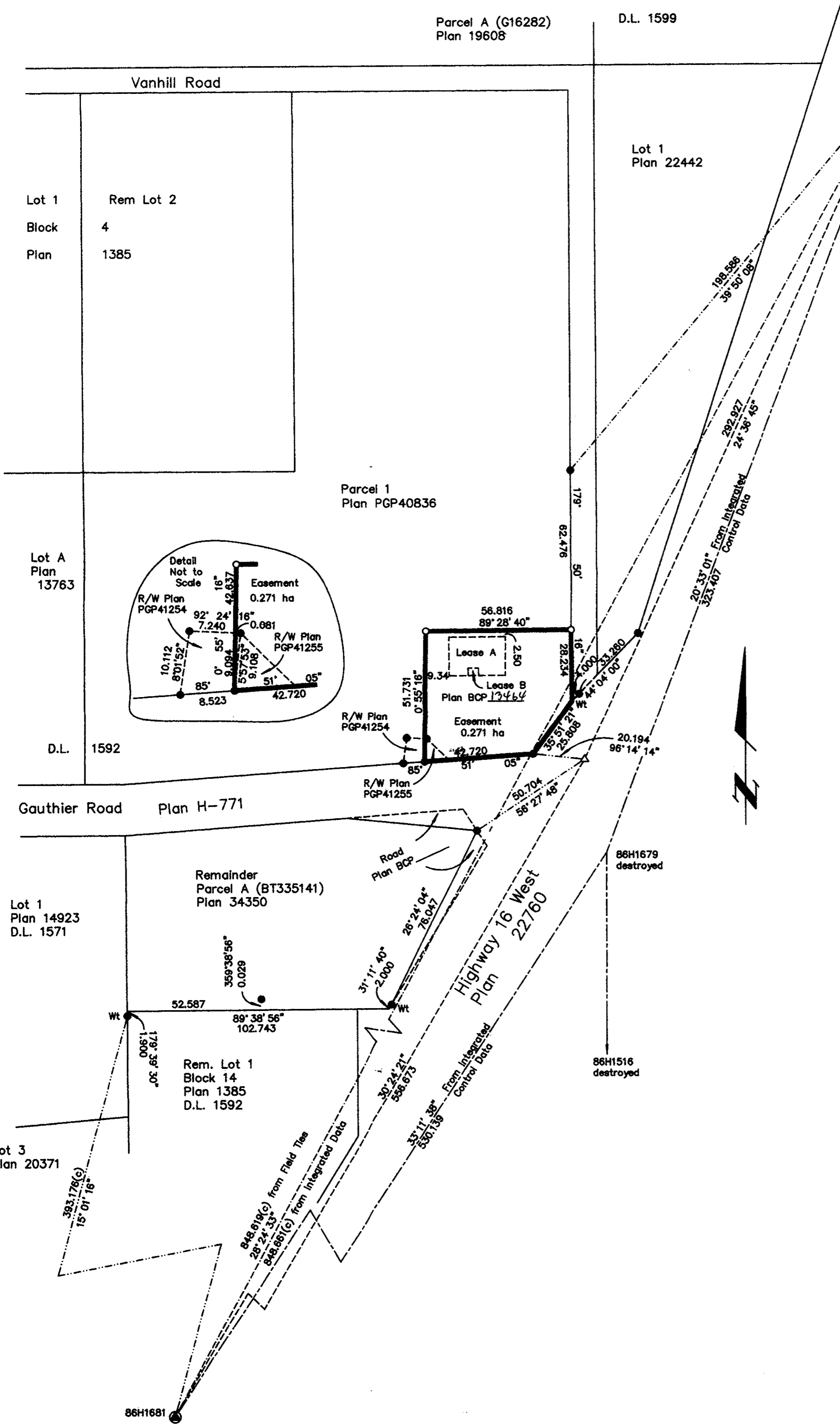


Deposited in the Land Title Office at New Westminster this 20 day of Sept, 2002.

REGISTRAR

B4433512



REFERENCE PLAN OF EASEMENT OVER PART OF PARCEL 1, PLAN PGP40836, DISTRICT LOT 1592, CARIBOO DISTRICT, B.C.G.S. 93G.086

Pursuant to Section 99(1)(a) of the Land Title Act.

Scale: 1 : 1250 (Distances are in metres)



Grid bearings are derived from observations between control monuments 86H1677 and 86H1681, integrated survey area number 39, City of Prince George, B.C. NAD83(CSRS)

Note: This plan shows ground level measured distances. Prior to computation of U.T.M. co-ordinates multiply by the combined factor 0.9994882

LEGEND

- Standard Iron Post Found
- Standard Iron Post Placed
- ⊙ Control Monument Found
- △ Traverse Hub Placed

I, Gordon Kilbride, a British Columbia Land Surveyor, of Prince George, in British Columbia, certify that I was present at and personally superintended the survey represented by this plan, and that the survey and plan are correct. The survey was completed on the 31 day of October, 2002.

*Gordon Kilbride*  
Gordon Kilbride, B.C.L.S.

This plan lies within the Fraser-Fort George Regional District.

<b>KILBRIDE LAND SURVEYING LTD.</b> British Columbia Land Surveyors Prince George, B.C. Ph: (250) 562-1196 Fax: 562-3656		
F.B. WN 67	D.L. 1592	File No. 020072E