

EXPLANATORY PLAN OF LEASE OF THE FIRST FLOOR OF A ONE STOREY BUILDING SITUATED ON PARCEL 1, PLAN PGP40836, DISTRICT LOT 1592, CARIBOO DISTRICT.

PLAN NO. BCP 13464

Deposited in the Land Title Office at New Westminster this 20 day of Sept, 2004.

Pursuant to Section 73(3) of the Land Title Act.

REGISTRAR

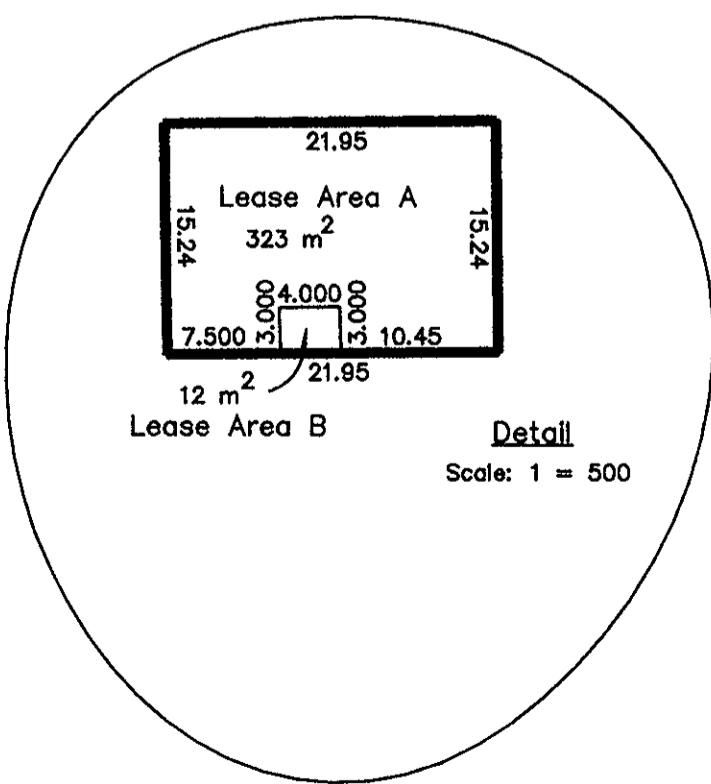
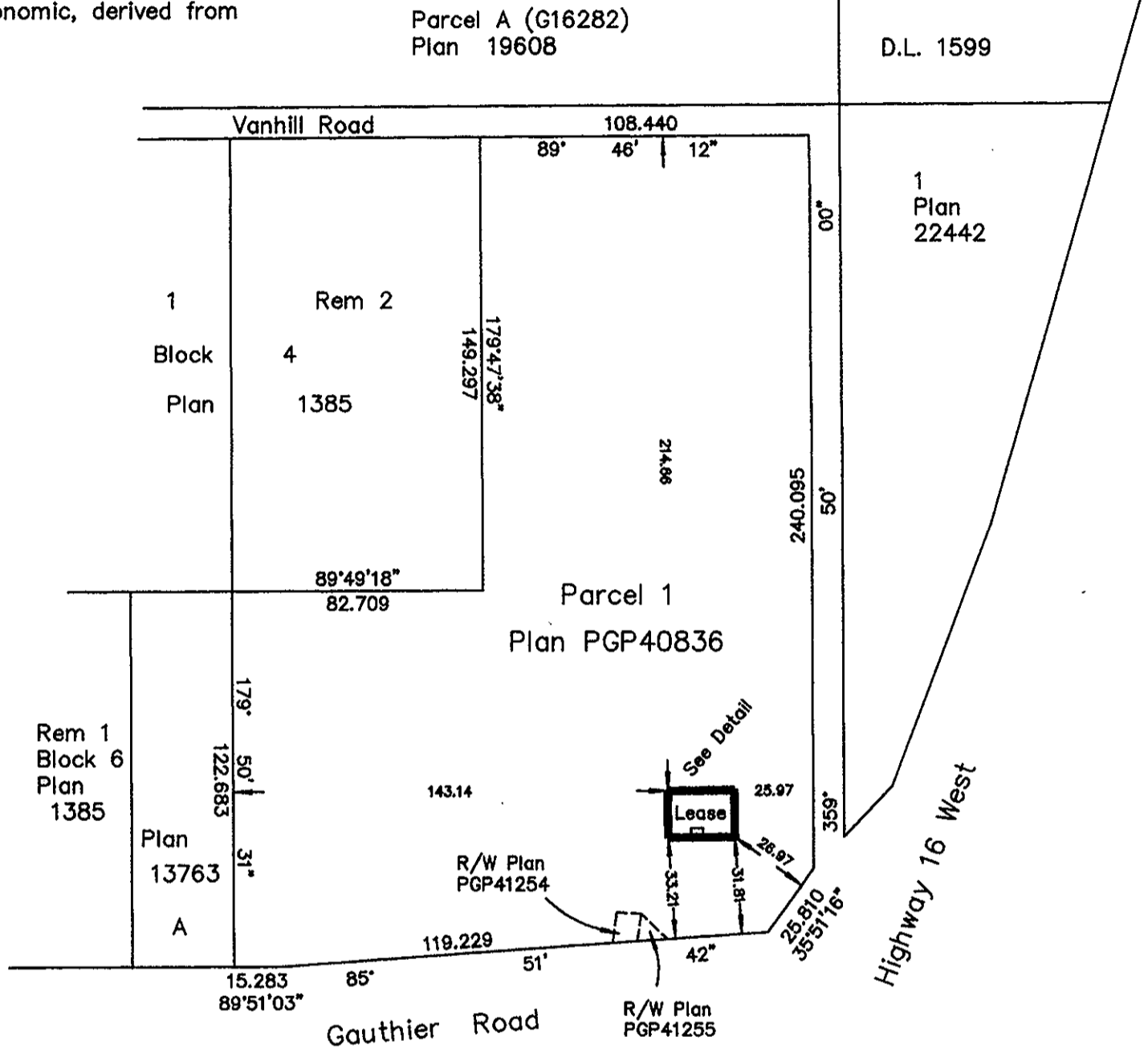
*Bu 433511*

B.C.G.S. 93G.086

Scale: 1 : 2000 (Distances are in metres)



Bearings are astronomic, derived from Plan PGP40836



Certified Correct, according to field measurements and Land Title Office Records. This 24 day of October, 2002.

*Gordon Kilbride*  
Gordon Kilbride, B.C.L.S.

This plan lies within the Fraser-Fort George Regional District.

<b>KILBRIDE LAND SURVEYING LTD.</b> British Columbia Land Surveyors Prince George, B.C. Ph: (250) 562-1196 Fax: 562-3656		
F.B.- WF80	D.L.- 1592	File No. 020072L