

EXPLANATORY PLAN OF EASEMENT THROUGH  
 LOTS 1 AND 2, PLAN BCP-1317  
 DISTRICT LOT 343  
 CARIBOO DISTRICT

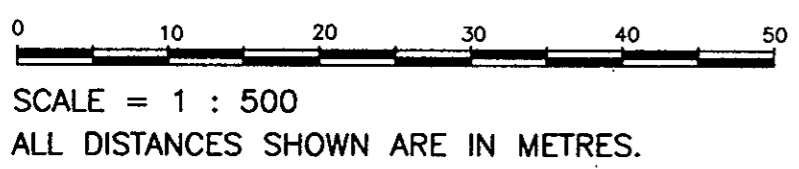
B.C.G.S. 93G.097

PURSUANT TO SECTION 99 OF THE LAND ACT.

PLAN No. BCP 01318

DEPOSITED IN THE LAND TITLE OFFICE  
 AT NEW WESTMINSTER, B.C., THIS 30  
 DAY OF SEPT 20 02

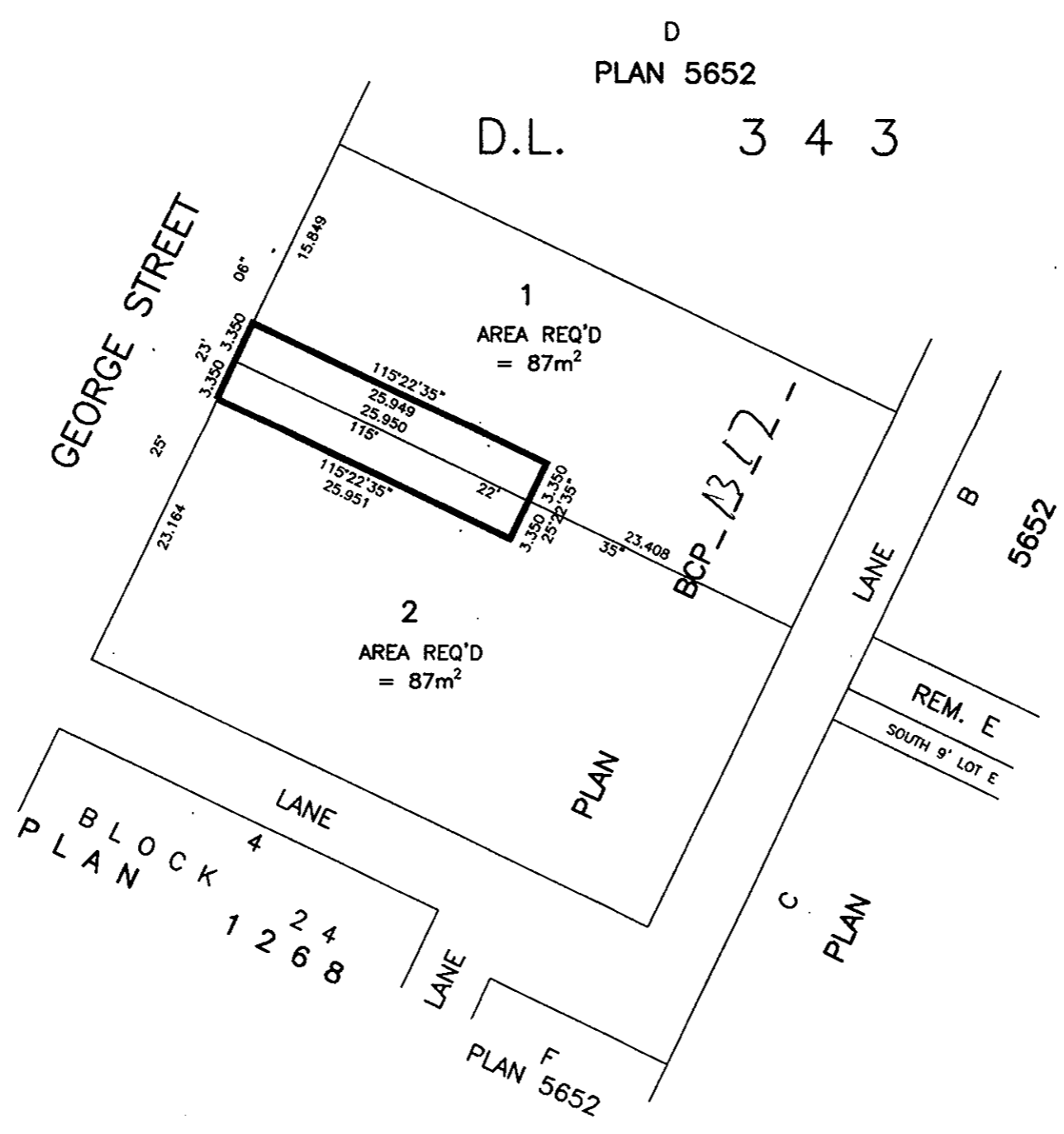
REGISTRAR  
 BT35640



BEARINGS ARE ASTRONOMIC, DERIVED FROM PLAN BCP-1317

BOOK OF REFERENCE

DESCRIPTION	PID	AREA REQUIRED
LOT 1, PLAN BCP-1317, D.L. 343, CARIBOO DISTRICT		87m <sup>2</sup>
LOT 2, PLAN BCP-1317, D.L. 343, CARIBOO DISTRICT		87m <sup>2</sup>



CERTIFIED CORRECT  
 ACCORDING TO LAND TITLE OFFICE RECORDS  
 THIS 18th DAY OF SEPTEMBER, 2002.

*R. L. Johns*  
 R. L. JOHNS, B.C.L.S., C.L.S.

THIS PLAN LIES WITHIN THE FRASER-FORT GEORGE REGIONAL DISTRICT.

R. L. JOHNS LAND SURVEYING LTD.  
 LEGAL AND ENGINEERING SURVEYS  
 240 VICTORIA STREET  
 PRINCE GEORGE, B. C. V2L 2J4  
 PHONE: (250)562-5759  
 FAX: (250)562-5703  
 2001047X CC6-10-12