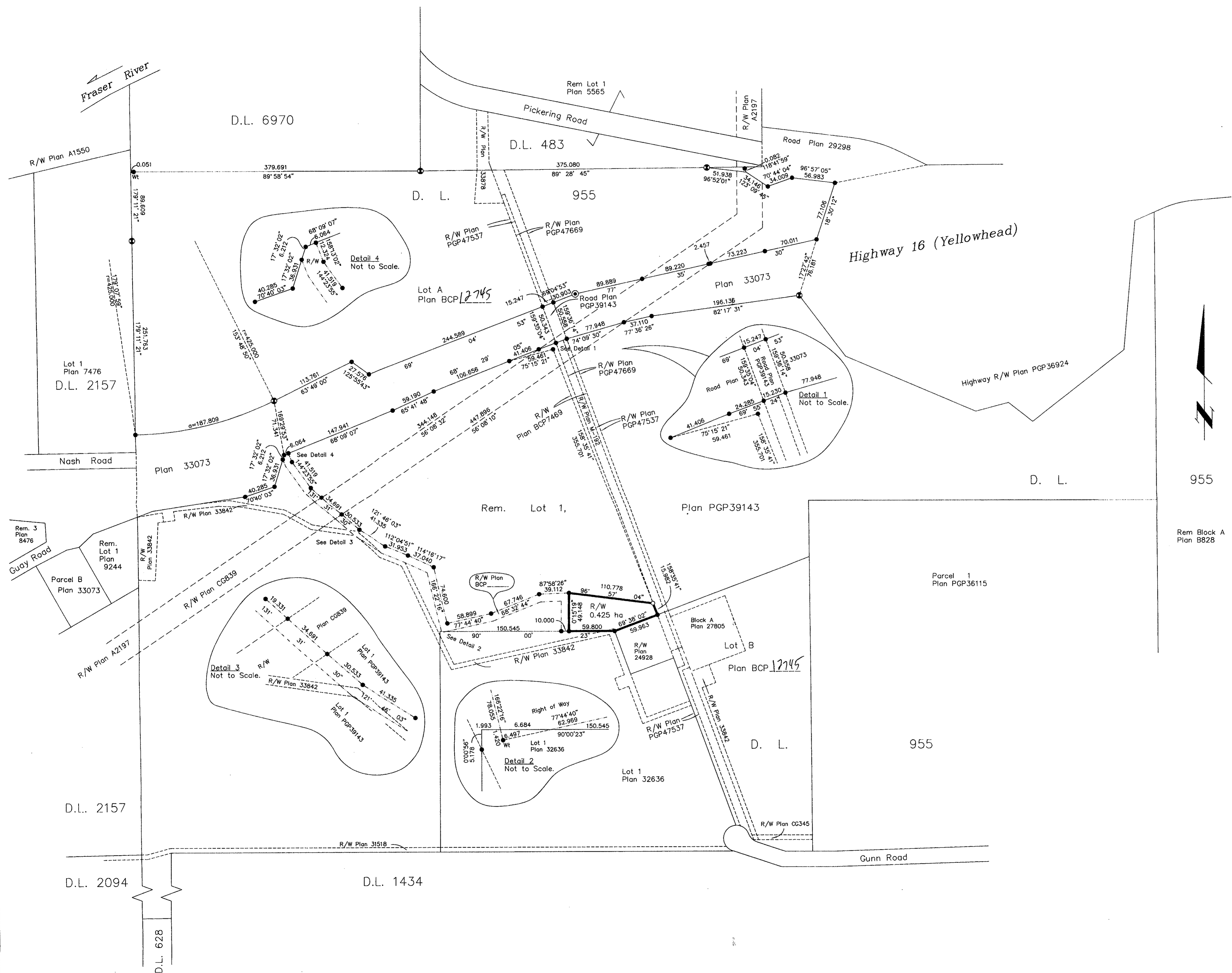


REGISTRAR



REFERENCE PLAN OF STATUTORY RIGHT OF WAY OVER PART OF LOT 1, DISTRICT LOT 955, CARIBOO DISTRICT, PLAN PGP39143. EXCEPT PLAN BCP 12745. Pursuant to Section 113 of the Land Title Act. B.C.G.S. 93G.097

Scale: 1 : 2500 (Distances are in metres)

Bearings are astronomic, derived from Plan PGP39143 - West Bdy = 179°11'21"

- LEGEND
- Standard Concrete Post Found
 - Standard Capped Post Found
 - Standard Iron Post Found
 - Standard Iron Post Placed

I, Gordon Kilbride, a British Columbia Land Surveyor, of Prince George, in British Columbia, certify that I was present at and personally superintended the survey represented by this plan, and that the survey and plan are correct. The field survey was completed on the 11 day of May, 2004. The plan was completed and checked, and the checklist filed under # 15865, on the 28 day of May, 2004.

Gordon Kilbride
 Gordon Kilbride, B.C.L.S.

This plan lies within the Fraser-Fort George Regional District.

KILBRIDE LAND SURVEYING LTD. British Columbia Land Surveyors Prince George, B.C. Ph: (250) 562-1196 Fax: 562-3656		
F.B.- WQ49	D.L.- 955	File No. - 000271R2