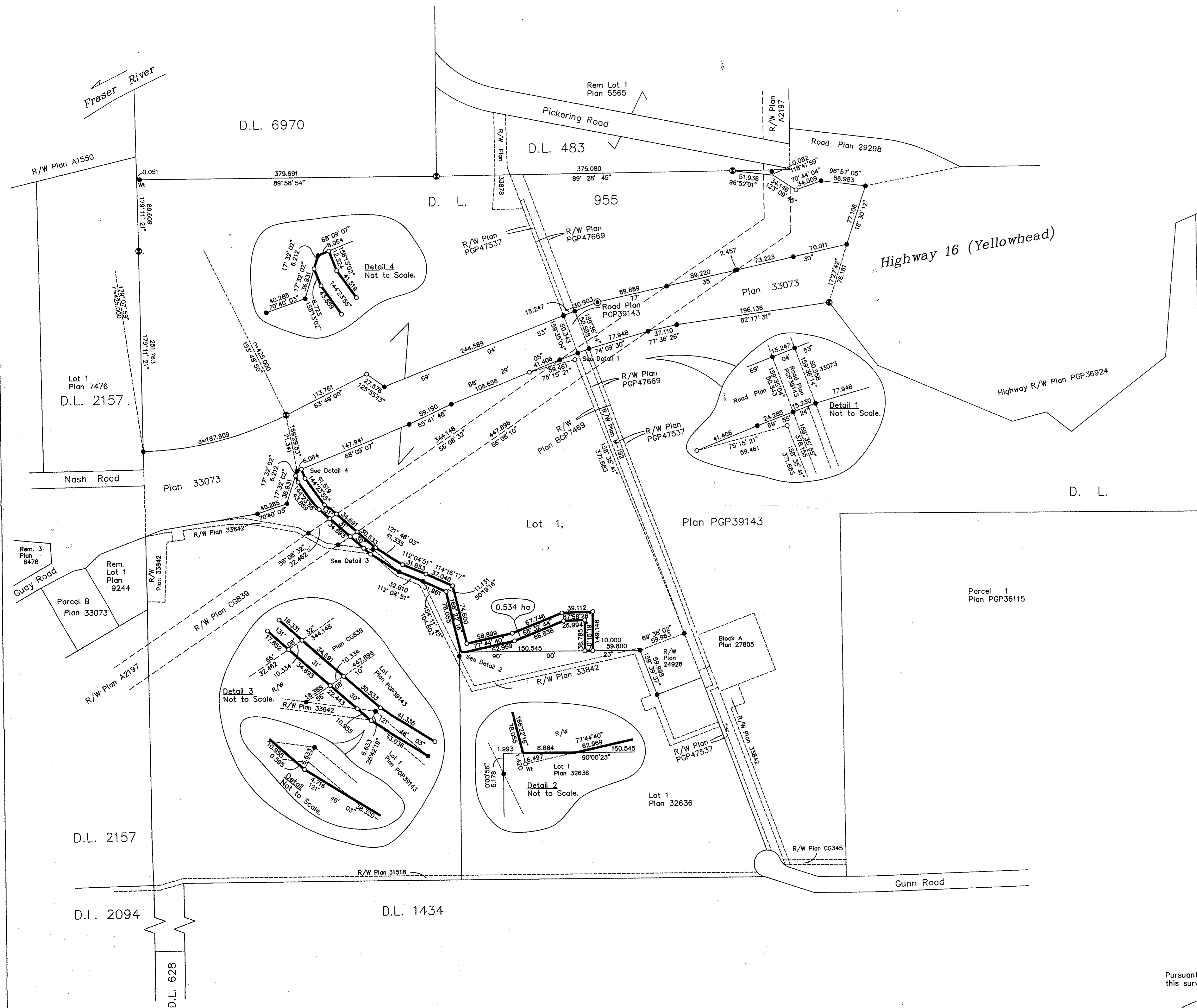


REGISTRAR



REFERENCE PLAN OF STATUTORY RIGHT OF WAY OVER PART OF LOT 1, DISTRICT LOT 955, CARIBOO DISTRICT, PLAN PGP39143. Pursuant to Section 113 of the Land Title Act. B.C.G.S. 93G.097

Scale: 1 : 2500 (Distances are in metres)



Bearings are astronomic, derived from Plan PGP39143 - West Bdy = 179°11'21"

LEGEND

- ⊙ Standard Concrete Post Found
- ⊕ Standard Capped Post Found
- Standard Iron Post Found
- Standard Iron Post Placed

Rem Block A Plan B828

I, Gordon Kilbride, a British Columbia Land Surveyor, of Prince George, in British Columbia, certify that I was present at and personally superintended the survey represented by this plan, and that the survey and plan are correct. The field survey was completed on the 16 day of December, 2003. The plan was completed and checked, and the checklist filed under #13637, on the 7 day of April, 2004.

Gordon Kilbride
Gordon Kilbride, B.C.L.S.

This plan lies within the Fraser-Fort George Regional District.

Pursuant to Section 50 of the General Survey Instruction Regulations, this survey need not be intergrated with survey control.

M. B. Baker
Surveyor General
Victoria, B.C. this 15th day of April, 2004.

KILBRIDE LAND SURVEYING LTD.
British Columbia Land Surveyors
Prince George, B.C.
Ph: (250) 562-1196 Fax: 562-3656

F.B.- WQ49 D.L.- 955 File No. -000271RW