

REFERENCE PLAN OF ROAD DEDICATION THROUGH  
DISTRICT LOT 938  
CARIBOO DISTRICT

12614  
PLAN No. BCP - - - - -

DEPOSITED IN THE LAND TITLE OFFICE  
AT NEW WESTMINSTER, B.C., THIS 3  
DAY OF AUG, 2004.

B.C.G.S. 93G.097  
PURSUANT TO SECTION 107 OF THE LAND TITLE ACT.



SCALE = 1 : 500  
ALL DISTANCES SHOWN ARE IN METRES.

REGISTRAR

BW35554

THIS PLAN SHOWS GROUND-LEVEL MEASURED DISTANCES.  
PRIOR TO COMPUTATION OF U.T.M. COORDINATES, MULTIPLY  
BY COMBINED FACTOR = 0.9995099.

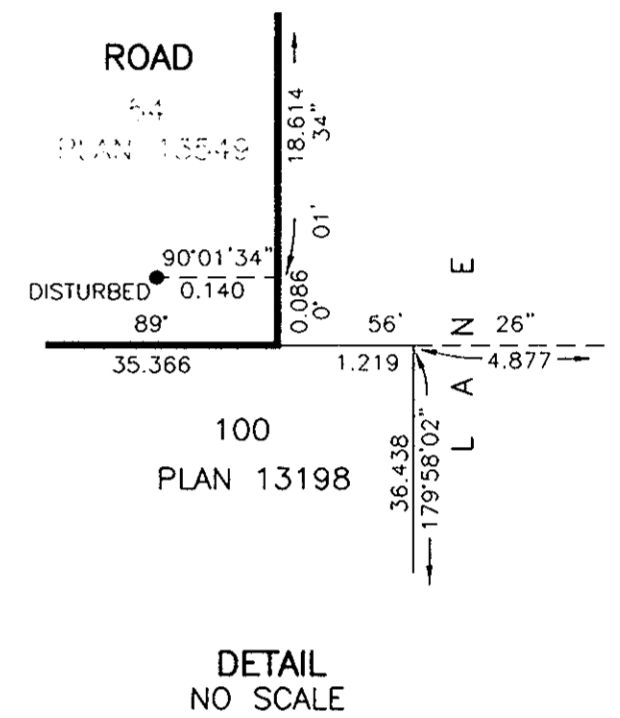
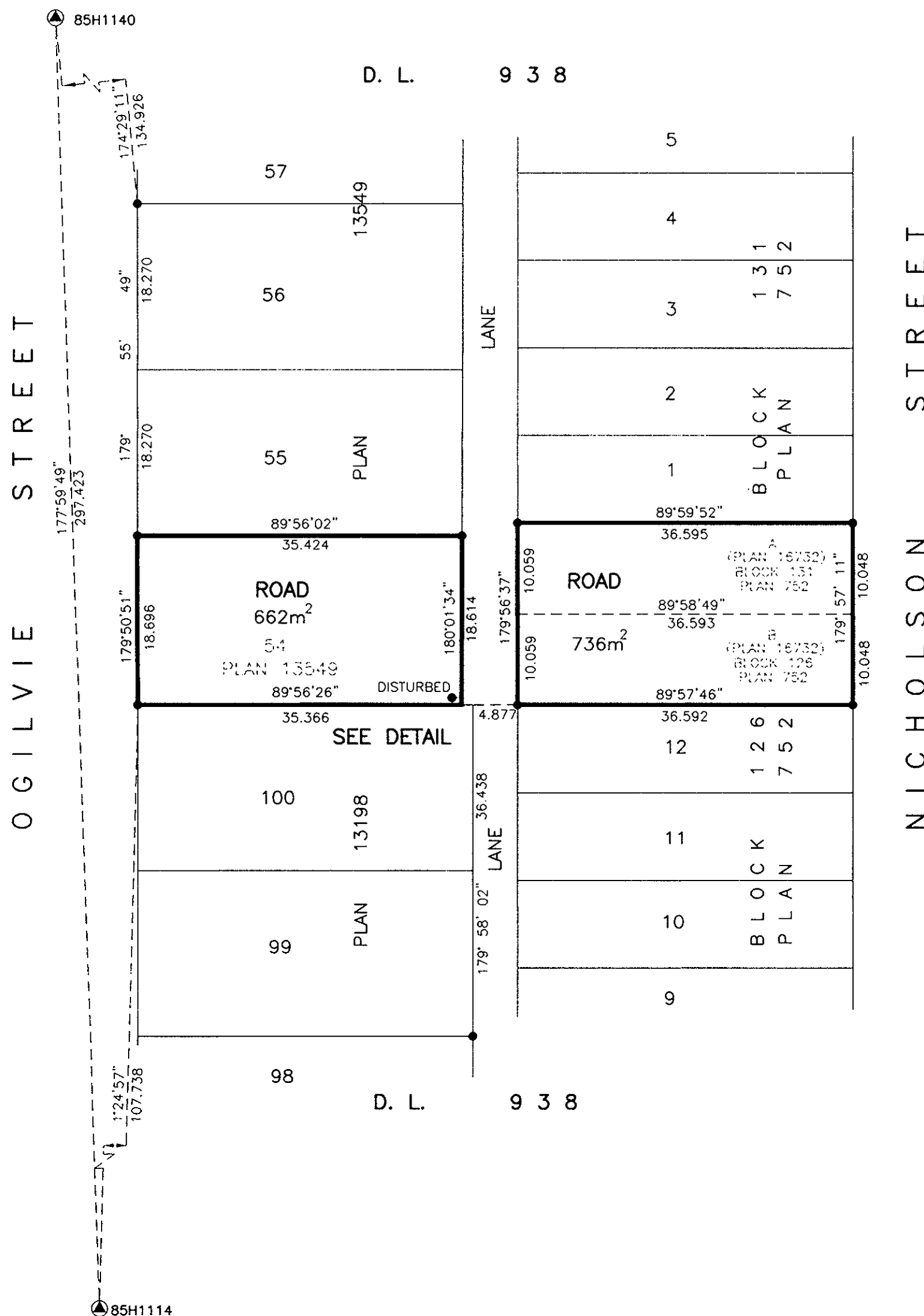
GRID BEARINGS ARE DERIVED FROM OBSERVATIONS  
BETWEEN CONTROL MONUMENTS 85H1114, AND 85H1140,  
INTEGRATED SURVEY AREA NUMBER 39, PRINCE GEORGE.

BOOK OF REFERENCE

DESCRIPTION	P.I.D.	AREA REQUIRED
LOT 54, PLAN 13549, D.L. 938	012-480-177	662m <sup>2</sup>
LOT A (PLAN 16732), BLOCK 131, PLAN 752, D.L. 938	012-587-338	368m <sup>2</sup>
LOT B (PLAN 16732), BLOCK 126, PLAN 752, D.L. 938	012-587-354	368m <sup>2</sup>

LEGEND

- STANDARD IRON POST FOUND.
- STANDARD IRON POST PLACED.
- ▲ CONTROL MONUMENT.



CITY OF PRINCE GEORGE

MAYOR: *[Signature]*  
PRINT NAME: Colin Kinsley

CLERK: *[Signature]*  
PRINT NAME: Don Schaffer

WITNESS (AS TO BOTH SIGNATURES):  
Judy Dix  
PRINT NAME: JUDY DIX  
ADDRESS: City Hall  
Prince George, B.C.  
Exec. Assistant  
OCCUPATION

APPROVED UNDER THE LAND TITLE ACT  
THIS 29th DAY OF July, 2004

*[Signature]*  
APPROVING OFFICER, CITY OF PRINCE GEORGE.

I, RONALD L. JOHNS, A BRITISH COLUMBIA LAND SURVEYOR, OF PRINCE GEORGE, IN BRITISH COLUMBIA, CERTIFY THAT I WAS PRESENT AT AND PERSONALLY SUPERINTENDED THE SURVEY REPRESENTED BY THIS PLAN AND THAT THE SURVEY AND PLAN ARE CORRECT. THE FIELD SURVEY WAS COMPLETED ON THE 22ND DAY OF APRIL, 2004. THE PLAN WAS COMPLETED AND CHECKED, AND THE CHECKLIST FILED UNDER #15748, ON THE 26TH DAY OF MAY, 2004.

*[Signature]*  
R.L. JOHNS, B.C.L.S., C.L.S.

THIS PLAN LIES WITHIN THE FRASER-FORT GEORGE REGIONAL DISTRICT.

R. L. JOHNS LAND SURVEYING LTD.  
LEGAL AND ENGINEERING SURVEYS  
240 VICTORIA STREET  
PRINCE GEORGE, B.C. V2L 2J4  
PHONE: (250)562-5759  
FAX: (250)562-5703  
2004004 EE6-17