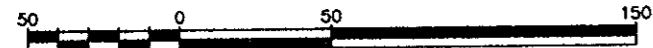


REFERENCE PLAN OF ROAD DEDICATION
OVER PART OF DISTRICT LOT 10227,
CARIBOO DISTRICT.
Pursuant to Section 107 of
the Land Title Act.
B.C.G.S. 93G.096

PLAN NO. BCP 12613

Deposited in the Land Title Office at New
Westminster this 3 day of Aug. 2004

Scale: 1 : 2500 (Distances are in metres)



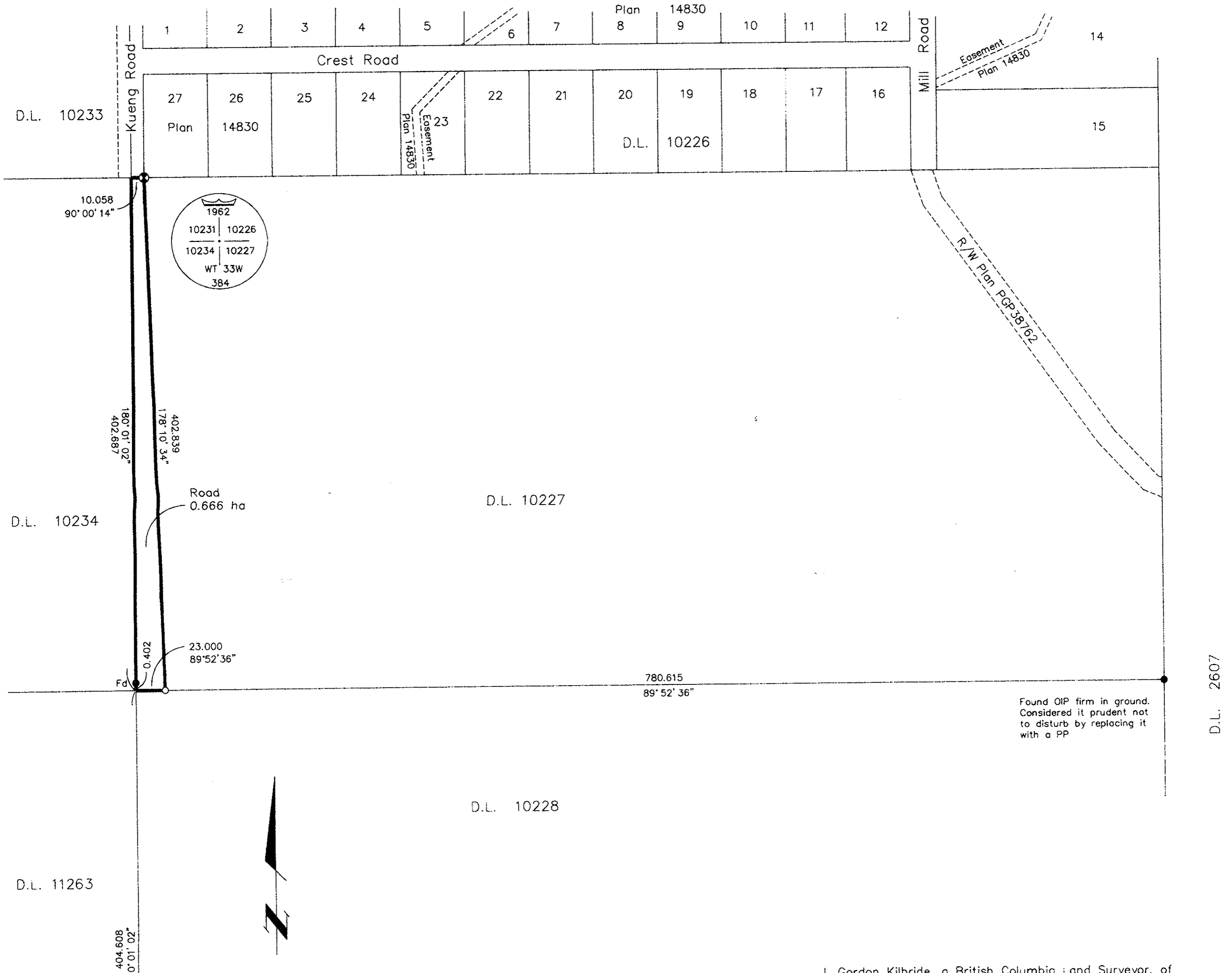
Bearings are astronomic, derived from
Plan PGP39741 = 0°01'20"

LEGEND

- Standard Capped Post Found
- Standard Iron Post Found
- Standard Iron Post Placed

REGISTRAR

REF. BW357269



I, Gordon Kilbride, a British Columbia Land Surveyor, of Prince George, in British Columbia, certify that I was present at and personally superintended the survey represented by this plan, and that the survey and plan are correct. The field survey was completed on the 9 day of September, 2004. The plan was completed and checked, and the checklist filed under #20887, on the 14th day of September, 2004.

Gordon Kilbride
Gordon Kilbride, B.C.L.S.

Owner: City of Prince George

Attest: *[Signature]*
Mayor

[Signature]
Clerk

Witness to both
JUDY DIX

Print Name: *City Hall*

Address: *Prince George, BC, V2L 3V9*
Postal Code

Occupation: *Secretary*

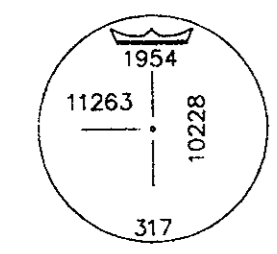
Approved under the Land Title Act this *17th* day of
September, 2004

[Signature]
Approving Officer
City of Prince George

This plan lies within the Fraser--Fort
George Regional District.

KILBRIDE LAND SURVEYING LTD.
British Columbia Land Surveyors
Prince George, B.C.
Ph: (250) 562-1196 Fax: 562-3656

F.B.- XH01 | D.L.- 10227 | File No. - 040135



Unsurveyed
Crown
Land