

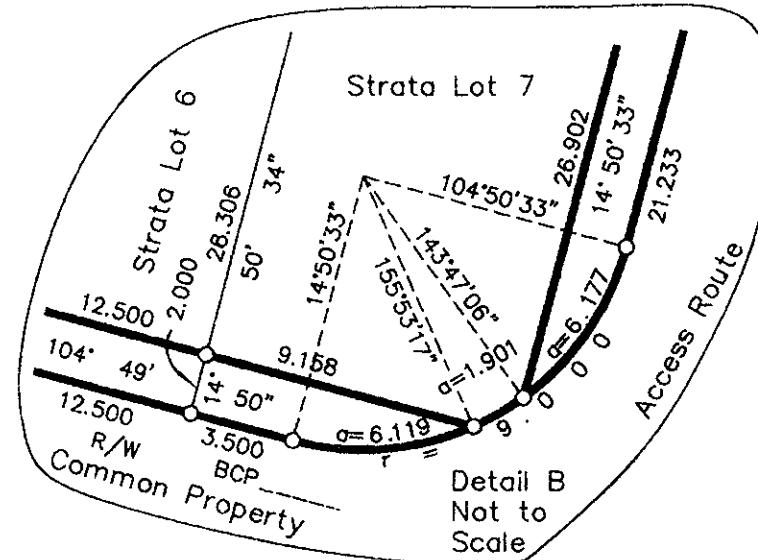
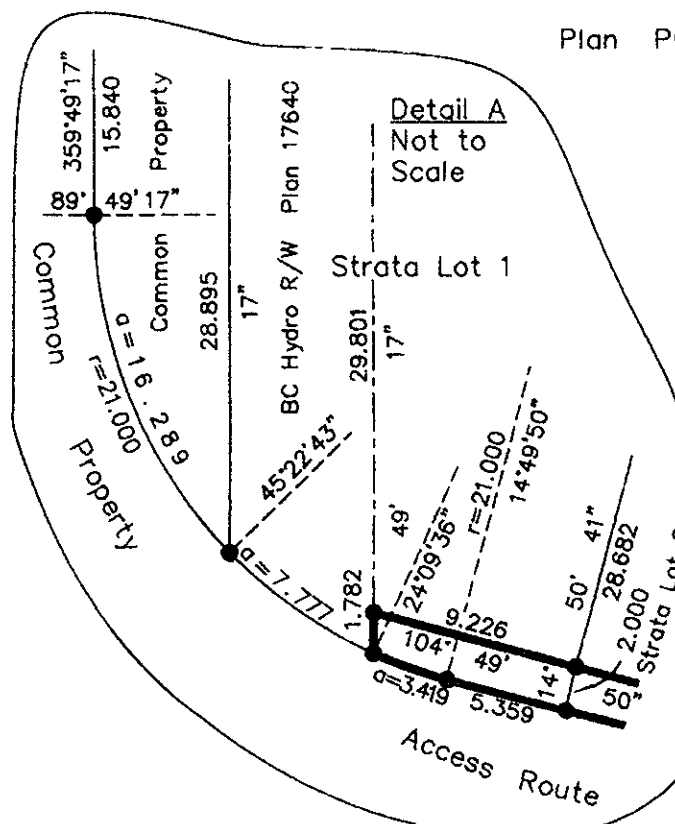
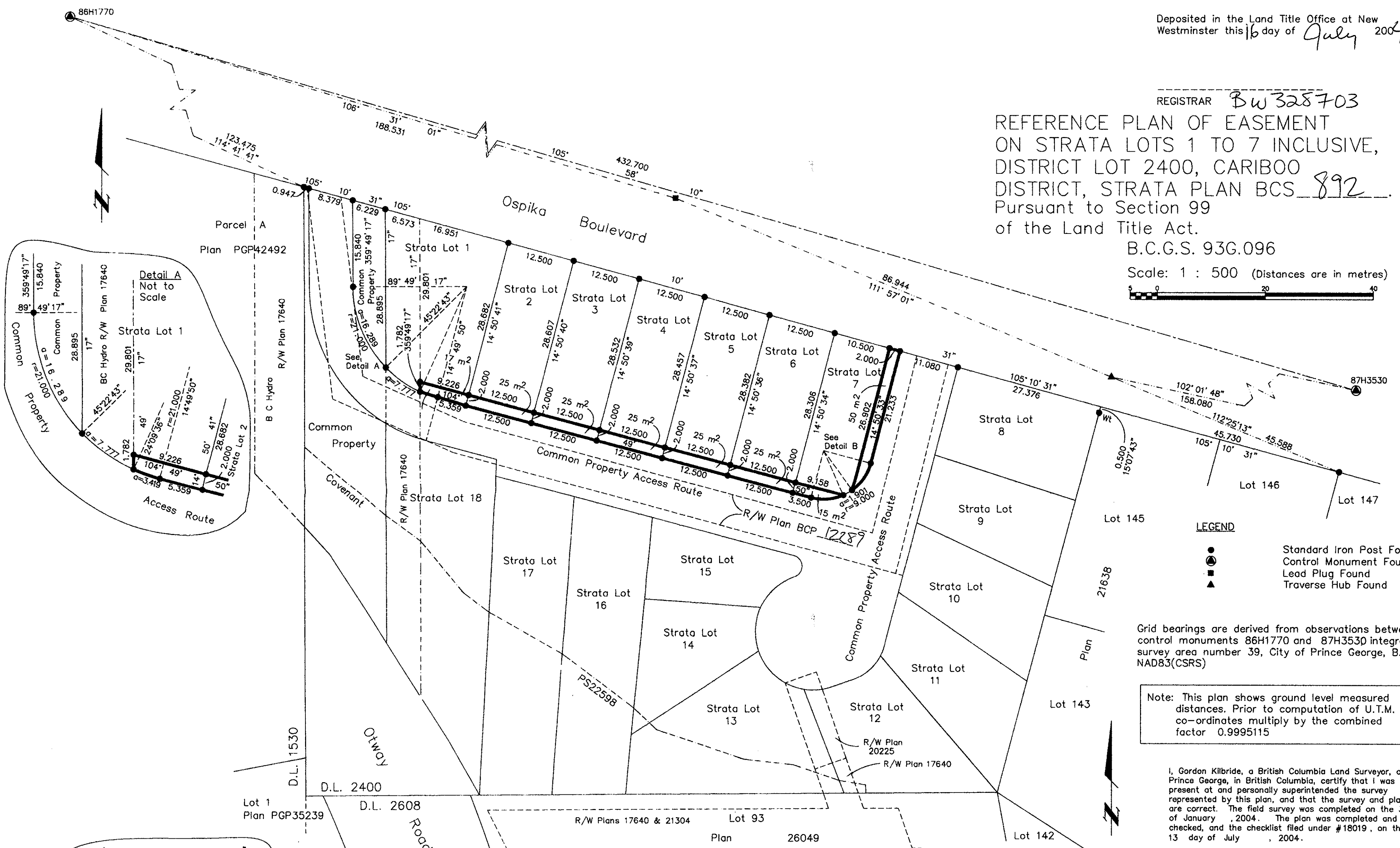
Deposited in the Land Title Office at New Westminster this 16 day of July 2004.

REGISTRAR Bw 328703

REFERENCE PLAN OF EASEMENT ON STRATA LOTS 1 TO 7 INCLUSIVE, DISTRICT LOT 2400, CARIBOO DISTRICT, STRATA PLAN BCS 892 Pursuant to Section 99 of the Land Title Act.

B.C.G.S. 93G.096

Scale: 1 : 500 (Distances are in metres)



LEGEND

- Standard Iron Post Found
- ⊙ Control Monument Found
- Lead Plug Found
- ▲ Traverse Hub Found

Grid bearings are derived from observations between control monuments 86H1770 and 87H3530 integrated survey area number 39, City of Prince George, B.C. NAD83(CSRS)

Note: This plan shows ground level measured distances. Prior to computation of U.T.M. co-ordinates multiply by the combined factor 0.9995115

I, Gordon Kilbride, a British Columbia Land Surveyor, of Prince George, in British Columbia, certify that I was present at and personally supervised the survey represented by this plan, and that the survey and plan are correct. The field survey was completed on the 30 day of January, 2004. The plan was completed and checked, and the checklist filed under #18019, on the 13 day of July, 2004.

*Gordon Kilbride*  
Gordon Kilbride, B.C.L.S.

BOOK OF REFERENCE	
DESCRIPTION	AREA
Strata Lot 1, D.L. 2400, Cariboo District, Plan BCS_____	17 m <sup>2</sup>
Strata Lot 2, D.L. 2400, Cariboo District, Plan BCS_____	25 m <sup>2</sup>
Strata Lot 3, D.L. 2400, Cariboo District, Plan BCS_____	25 m <sup>2</sup>
Strata Lot 4, D.L. 2400, Cariboo District, Plan BCS_____	25 m <sup>2</sup>
Strata Lot 5, D.L. 2400, Cariboo District, Plan BCS_____	25 m <sup>2</sup>
Strata Lot 6, D.L. 2400, Cariboo District, Plan BCS_____	25 m <sup>2</sup>
Strata Lot 7, D.L. 2400, Cariboo District, Plan BCS_____	65 m <sup>2</sup>

This plan lies within the Fraser-Fort George Regional District.

**KILBRIDE LAND SURVEYING LTD.**  
British Columbia Land Surveyors  
Prince George, B.C.  
Ph: (250) 562-1196 Fax: 562-3656

F.B.- RA    D.L.- 2400    File No. -030179-E