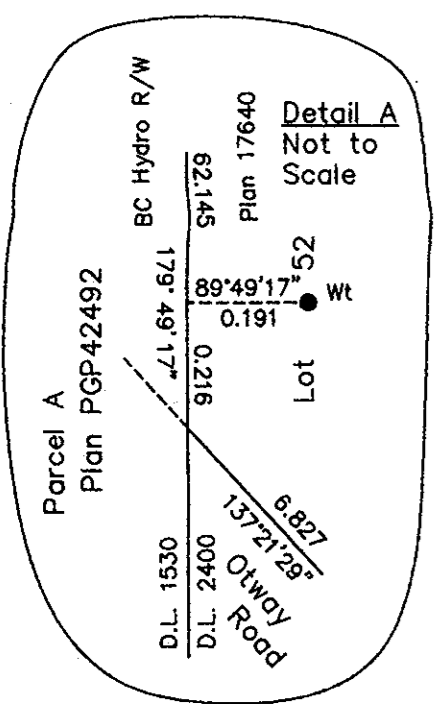
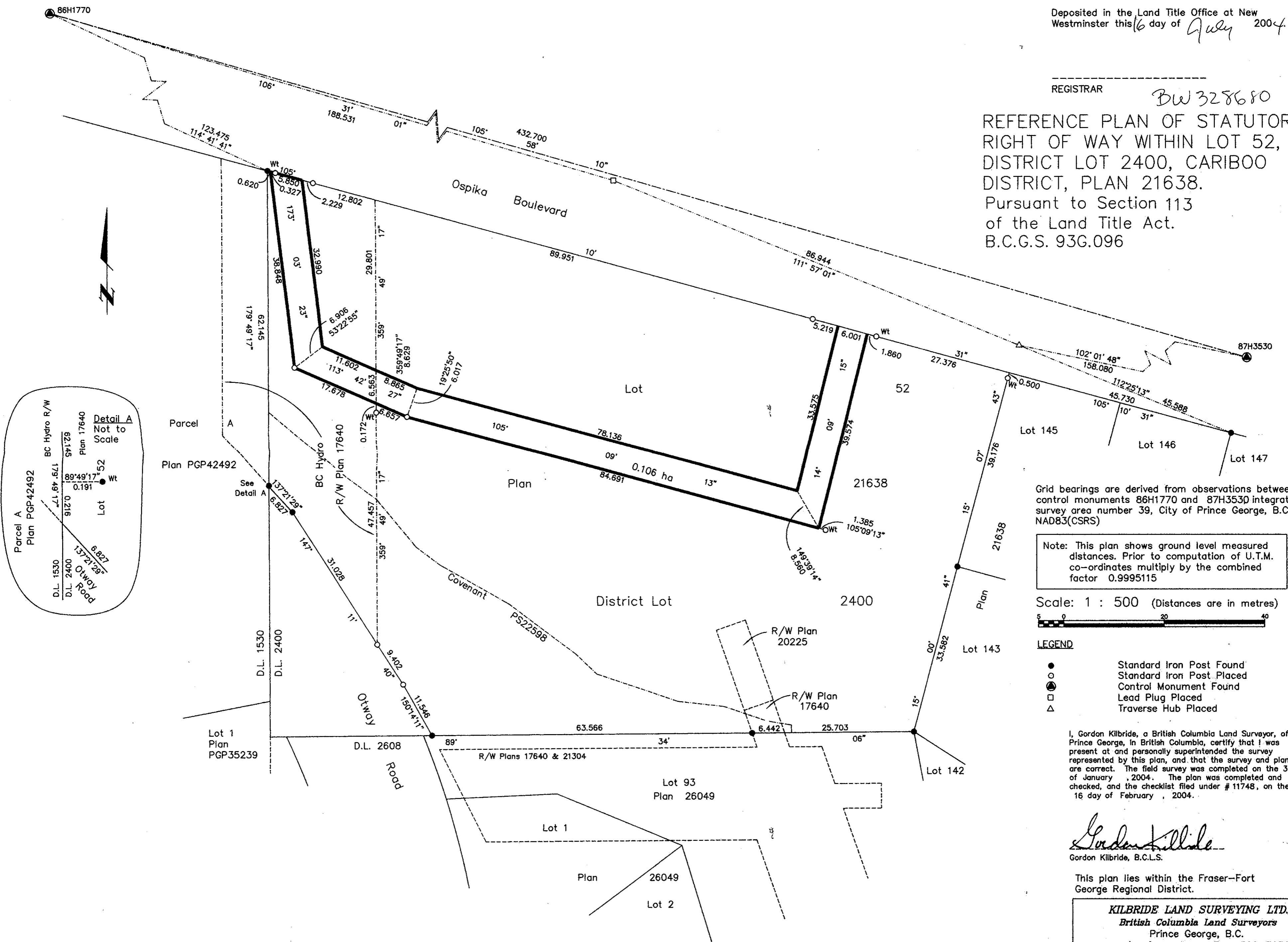


Deposited in the Land Title Office at New Westminster this 16 day of July 2004

REGISTRAR BW 328680

REFERENCE PLAN OF STATUTORY RIGHT OF WAY WITHIN LOT 52, DISTRICT LOT 2400, CARIBOO DISTRICT, PLAN 21638. Pursuant to Section 113 of the Land Title Act. B.C.G.S. 93G.096



Grid bearings are derived from observations between control monuments 86H1770 and 87H3530 integrated survey area number 39, City of Prince George, B.C. NAD83(CSRS)

Note: This plan shows ground level measured distances. Prior to computation of U.T.M. co-ordinates multiply by the combined factor 0.9995115

Scale: 1 : 500 (Distances are in metres)

- LEGEND**
- Standard Iron Post Found
 - Standard Iron Post Placed
 - ⊙ Control Monument Found
 - Lead Plug Placed
 - △ Traverse Hub Placed

I, Gordon Kilbride, a British Columbia Land Surveyor, of Prince George, in British Columbia, certify that I was present at and personally supervised the survey represented by this plan, and that the survey and plan are correct. The field survey was completed on the 30 day of January, 2004. The plan was completed and checked, and the checklist filed under #11748, on the 16 day of February, 2004.

Gordon Kilbride
Gordon Kilbride, B.C.L.S.

This plan lies within the Fraser-Fort George Regional District.

KILBRIDE LAND SURVEYING LTD.		
British Columbia Land Surveyors		
Prince George, B.C.		
Ph: (250) 562-1196 Fax: 562-3656		
F.B.- RA	D.L.- 2400	File No. - 030179RW