

Deposited in the Land Title Office at New Westminster this 12 day of July 2004.

BW317601

REGISTRAR

REFERENCE PLAN TO ACCOMPANY COVENANTS OVER LOT 1, PLAN BCP3565, DISTRICT LOTS 753 AND 2003 AND PART LOT 2, EXCEPT: PART ON PLAN BCP3565, PLAN PGP47842, DISTRICT LOT 2003, ALL IN CARIBOO DISTRICT.

Pursuant to Section 99(1)(e) of the Land Title Act.

B.C.G.S. 93G.097

Scale: 1 : 2000 (Distances are in metres)



Grid bearings are derived from observations between control monuments 86H1484 and 86H1673, integrated survey area number 39, City of Prince George, B.C. NAD83(CSRS)

Note: This plan shows ground level measured distances. Prior to computation of U.T.M. co-ordinates multiply by the combined factor 0.9995006

LEGEND

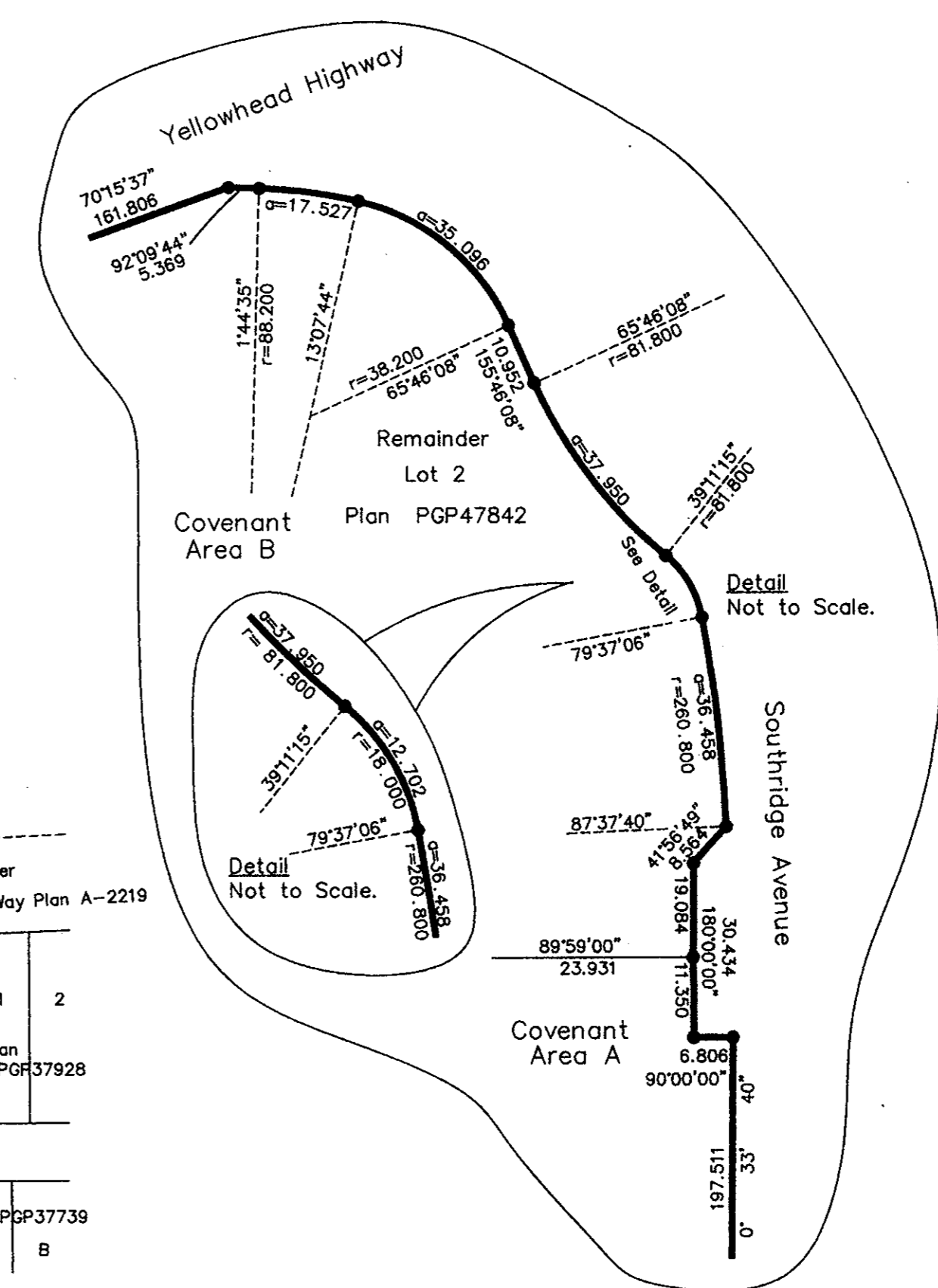
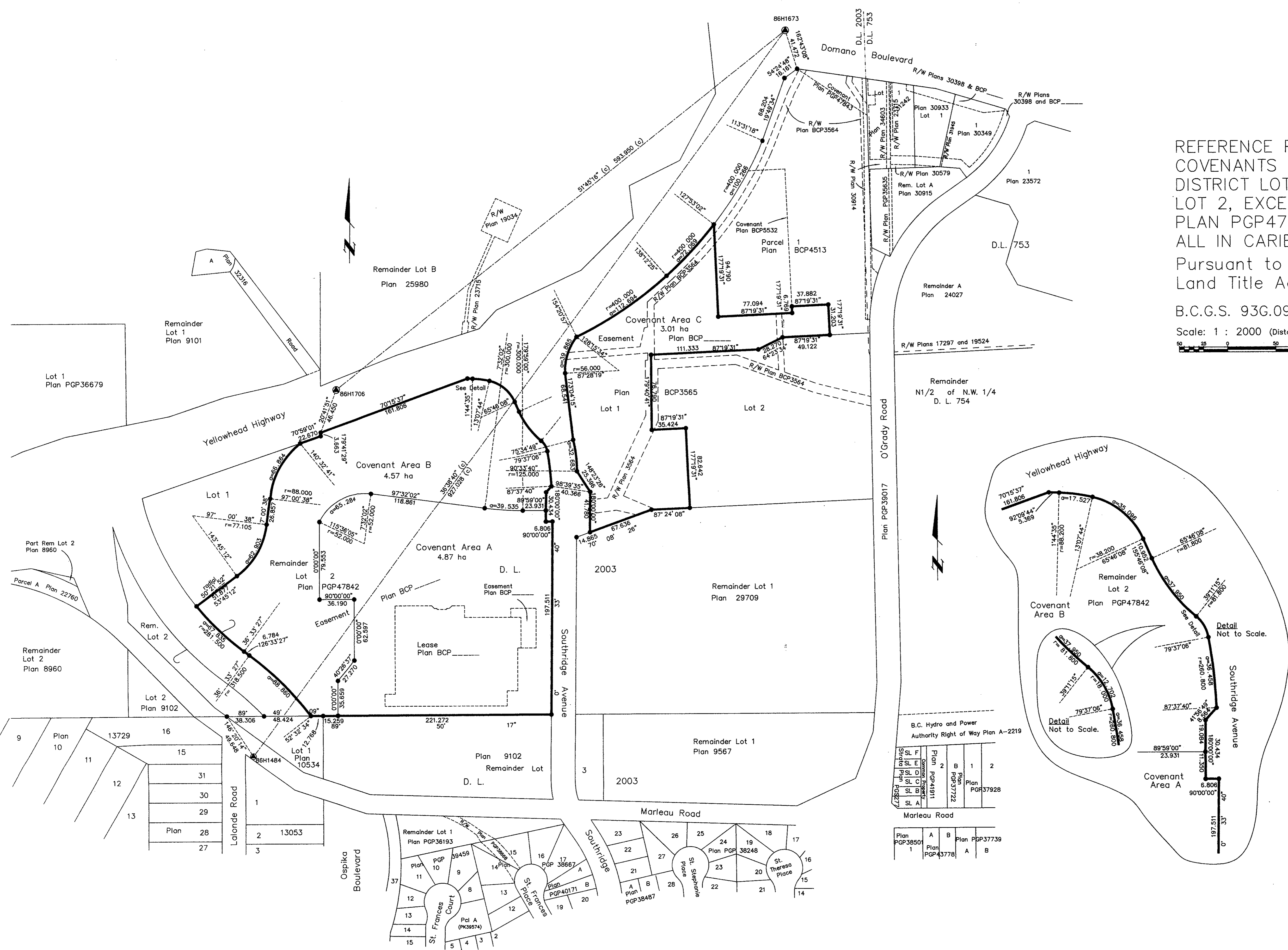
- Standard Iron Post Found
- ⊙ Control Monument Found

I, Gordon Kilbride, a British Columbia Land Surveyor, of Prince George, in British Columbia, certify that I was present at and personally superintended the survey represented by this plan, and that the survey and plan are correct. The field survey was completed on the 20 day of November, 2003. The plan was completed and checked, and the checklist filed under #14012, on the 16th day of April, 2004.

Gordon Kilbride
Gordon Kilbride, B.C.L.S.

This plan lies within the Fraser-Fort George Regional District.

KILBRIDE LAND SURVEYING LTD.
British Columbia Land Surveyors
Prince George, B.C.
Ph: (250) 562-1196 Fax: 562-3656
F.B.- RA D.L.- 2003 File No. - 030219A4



B.C. Hydro and Power Authority Right of Way Plan A-2219

Plan	Authority	Plan	Authority
Plan PGP41811	Authority	Plan PGP37722	Authority
Plan PGP41811	Authority	Plan PGP37722	Authority
Plan PGP41811	Authority	Plan PGP37722	Authority

Marleau Road

Plan	Authority	Plan	Authority
Plan PGP38501	Authority	Plan PGP37739	Authority
Plan PGP38501	Authority	Plan PGP37739	Authority