

Deposited in the Land Title Office at New Westminster this 12 day of July 2004

BW 317600

REGISTRAR

REFERENCE PLAN OF EASEMENT OVER PART OF LOT 2, EXCEPT PART ON PLAN BCP3565, DISTRICT LOT 2003, CARIBOO DISTRICT, PLAN PGP47842.

Pursuant to Section 99 of the Land Title Act.

B.C.G.S. 93G.097

Scale: 1 : 2000 (Distances are in metres)



Grid bearings are derived from observations between control monuments 86H1484 and 86H1673, integrated survey area number 39, City of Prince George, B.C. NAD83(CSRS)

Note: This plan shows ground level measured distances. Prior to computation of U.T.M. co-ordinates multiply by the combined factor 0.9995006

LEGEND

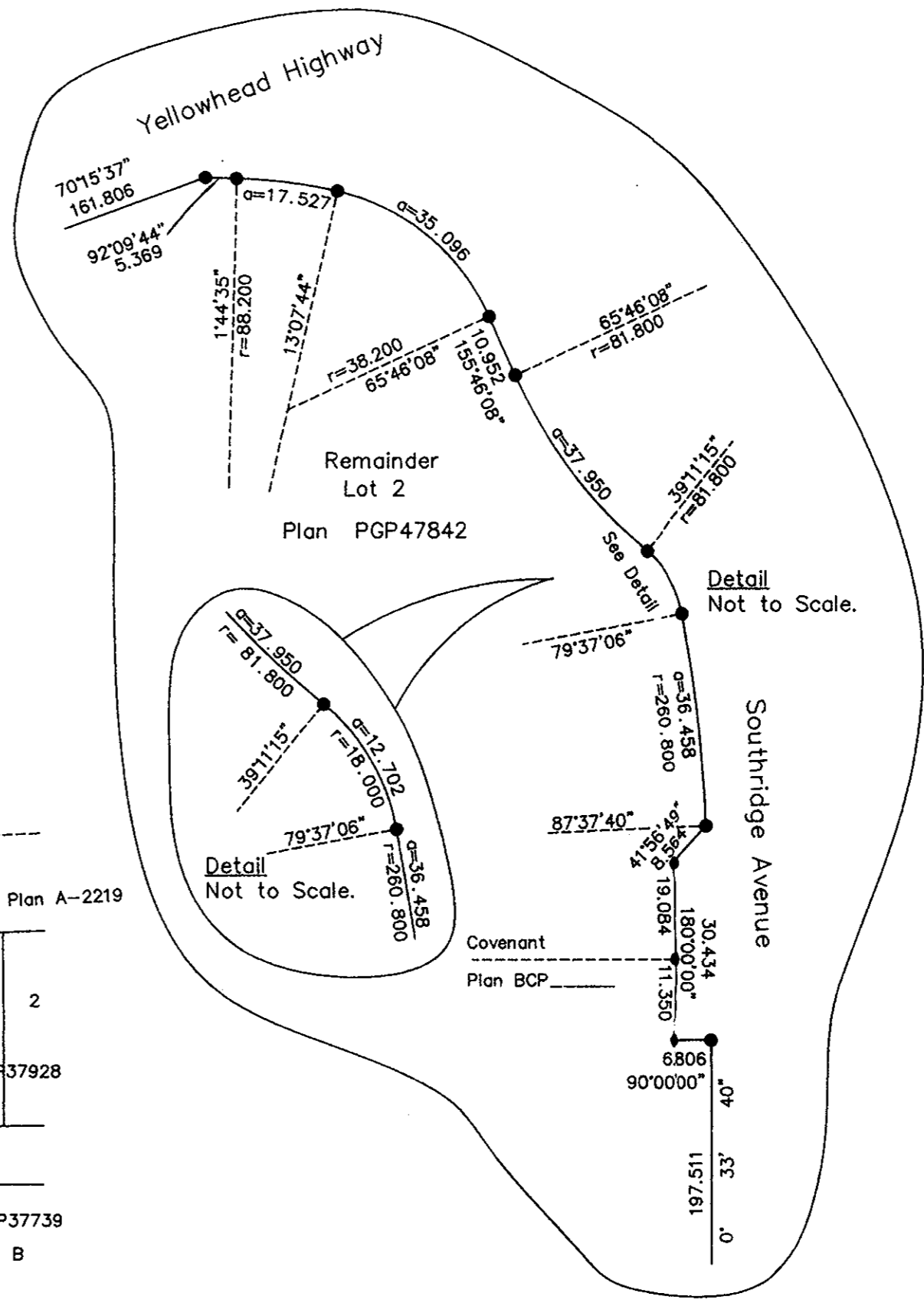
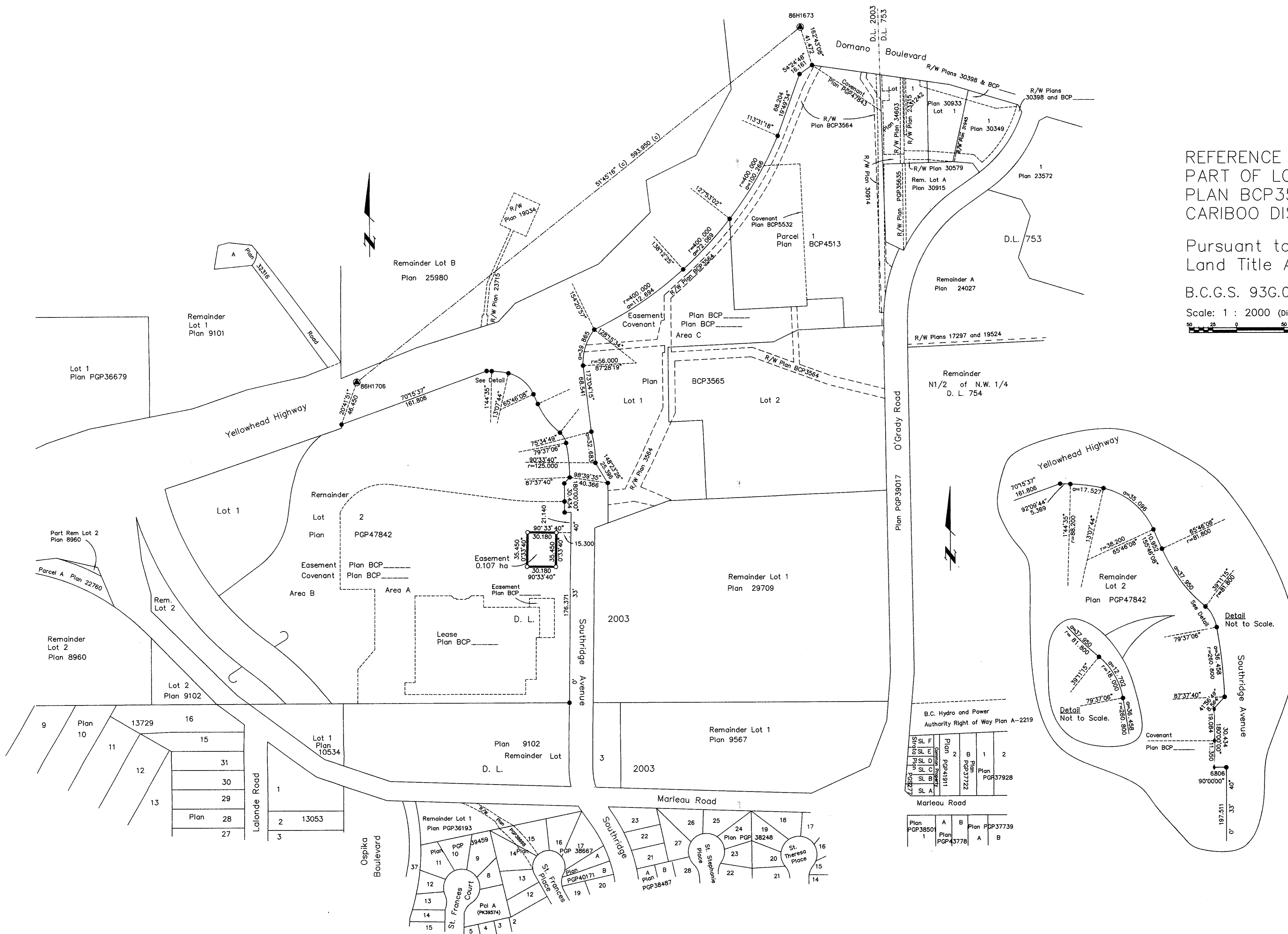
- Standard Iron Post Found
- Standard Iron Post Placed
- ⊙ Control Monument Found

I, Gordon Kilbride, a British Columbia Land Surveyor, of Prince George, in British Columbia, certify that I was present at and personally superintended the survey represented by this plan, and that the survey and plan are correct. The field survey was completed on the 21 day of November, 2003. The plan was completed and checked, and the checklist filed under #14013, on the 16 day of April, 2004.

Gordon Kilbride
Gordon Kilbride, B.C.L.S.

This plan lies within the Fraser-Fort George Regional District.

KILBRIDE LAND SURVEYING LTD.
British Columbia Land Surveyors
Prince George, B.C.
Ph: (250) 562-1196 Fax: 562-3656
F.B.- RA D.L.- 2003 File No. - 030219A3



SL F	Plan	1	2
SL E	Plan	PGP41811	PGP37722
SL C	Plan	PGP41811	PGP37722
SL B	Plan	PGP41811	PGP37722
SL A	Plan	PGP41811	PGP37722

Plan	A	B	Plan	PGP37739
PGP38501	1	Plan	PGP43778	A B