

Deposited in the Land Title Office at New Westminster this 22 day of July 2004

217599

REGISTRAR

REFERENCE PLAN OF EASEMENTS OVER LOT 1, PLAN BCP3565, DISTRICT LOTS 753 AND 2003 AND PART OF LOT 2, EXCEPT: PART ON PLAN BCP3565, DISTRICT LOT 2003, PLAN PGP47842, ALL OF CARIBOO DISTRICT.

Pursuant to Section 99 of the Land Title Act.

B.C.G.S. 93G.097

Scale: 1 : 2000 (Distances are in metres)



Grid bearings are derived from observations between control monuments 86H1484 and 86H1673, integrated survey area number 39, City of Prince George, B.C. NAD83(CSRS)

Note: This plan shows ground level measured distances. Prior to computation of U.T.M. co-ordinates multiply by the combined factor 0.9995006

LEGEND

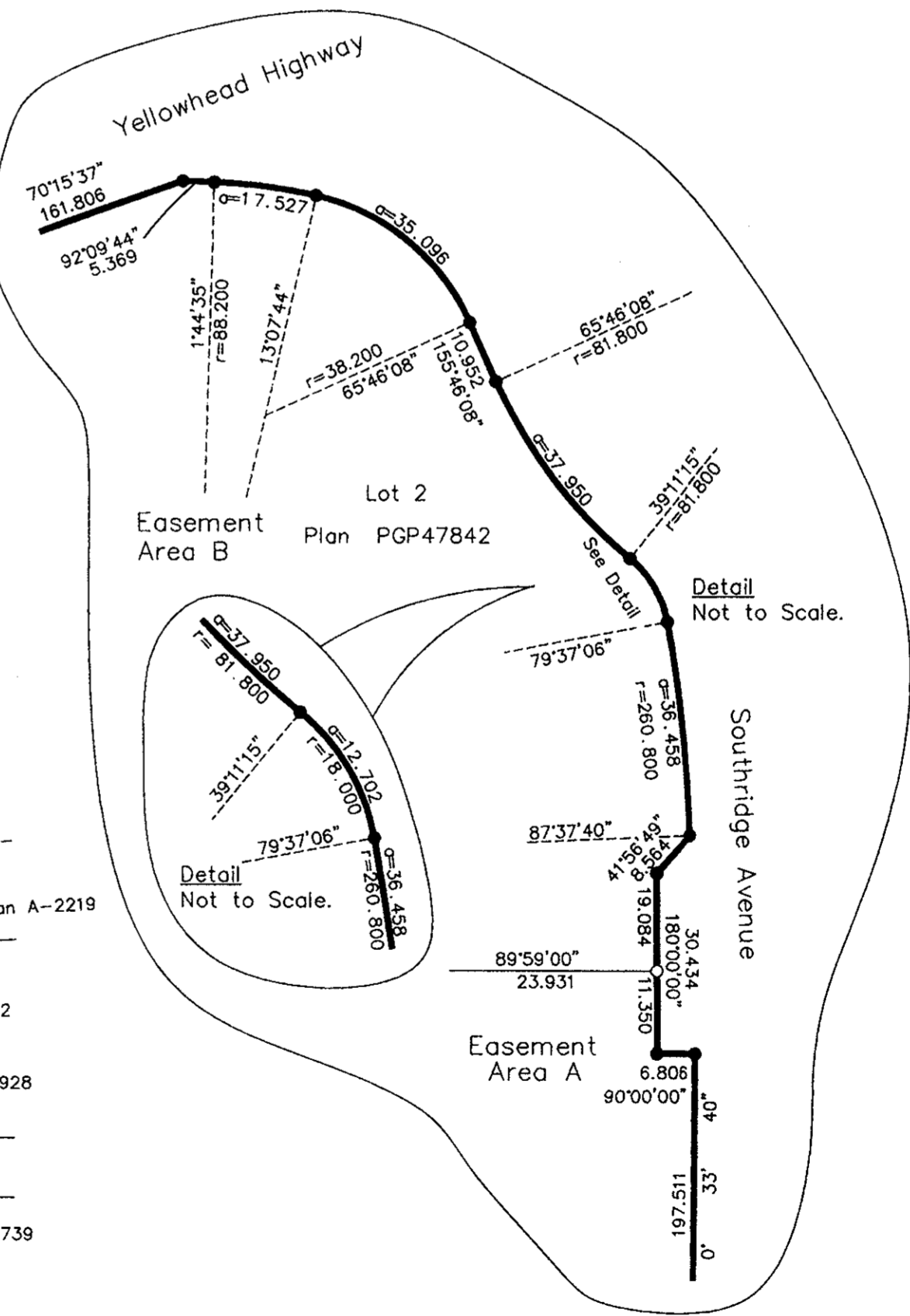
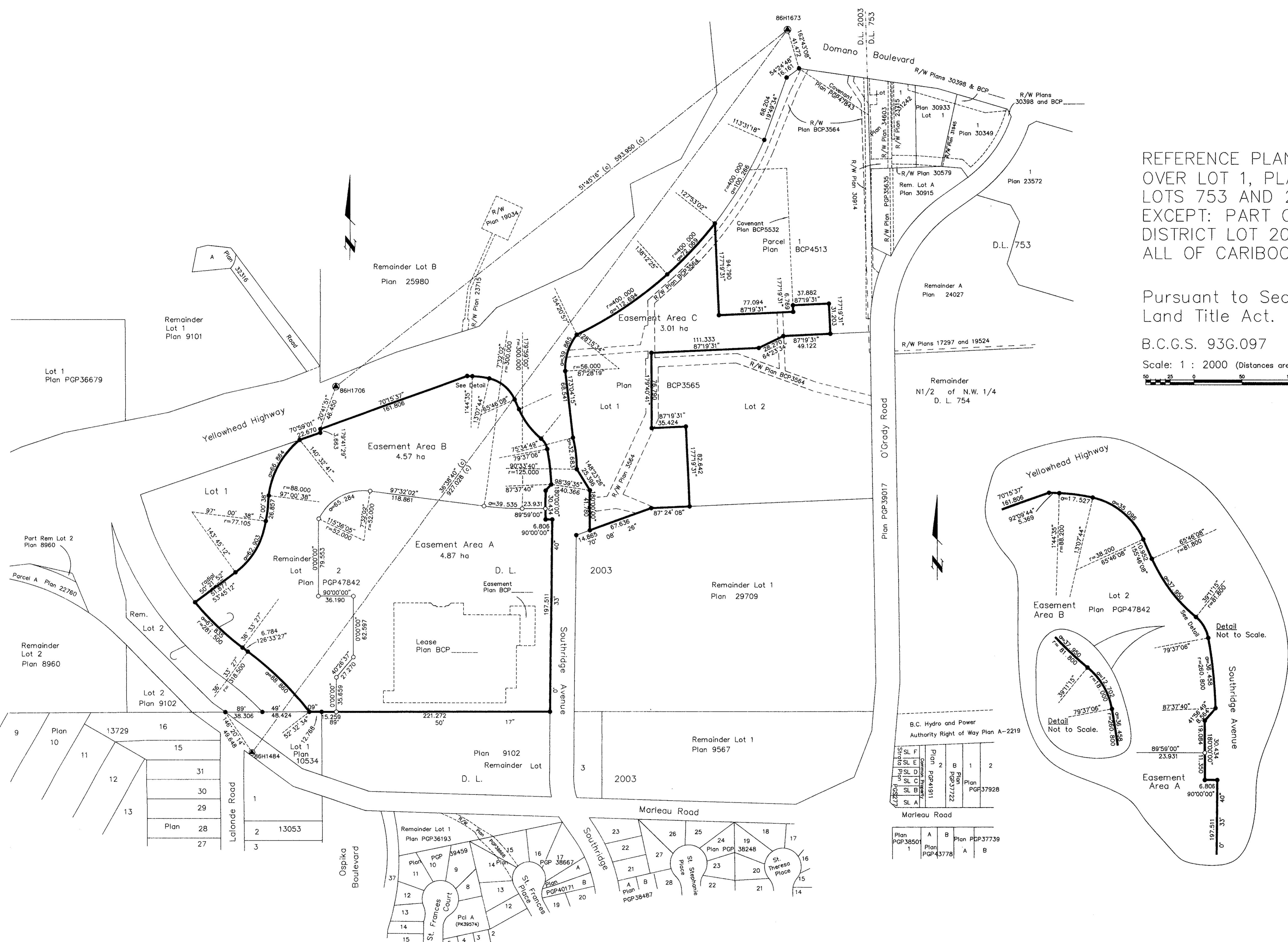
- Standard Iron Post Found
- Standard Iron Post Placed
- ⊙ Control Monument Found

I, Gordon Kilbride, a British Columbia Land Surveyor, of Prince George, in British Columbia, certify that I was present at and personally supervised the survey represented by this plan, and that the survey and plan are correct. The field survey was completed on the 19 day of November, 2003. The plan was completed and checked, and the checklist filed under #14020, on the 16 day of April, 2004.

*Gordon Kilbride*  
Gordon Kilbride, B.C.L.S.

This plan lies within the Fraser-Fort George Regional District.

**KILBRIDE LAND SURVEYING LTD.**  
British Columbia Land Surveyors  
Prince George, B.C.  
Ph: (250) 562-1196 Fax: 562-3656  
F.B.- RA D.L.- 2003 File No. - 030219A2



B.C. Hydro and Power Authority Right of Way Plan A-2219

System	SL F	Plan	2	B	1	2
Structure	SL E	Plan	PGP37722			
Structure	SL D	Plan	PGP41911			
Structure	SL C	Plan	PGP37722			
Structure	SL B	Plan	PGP37928			
Structure	SL A	Plan	PGP43778			

Marleau Road

Plan	A	B	Plan	PGP37739
PGP38501			PGP43778	