

BW 517598

REGISTRAR

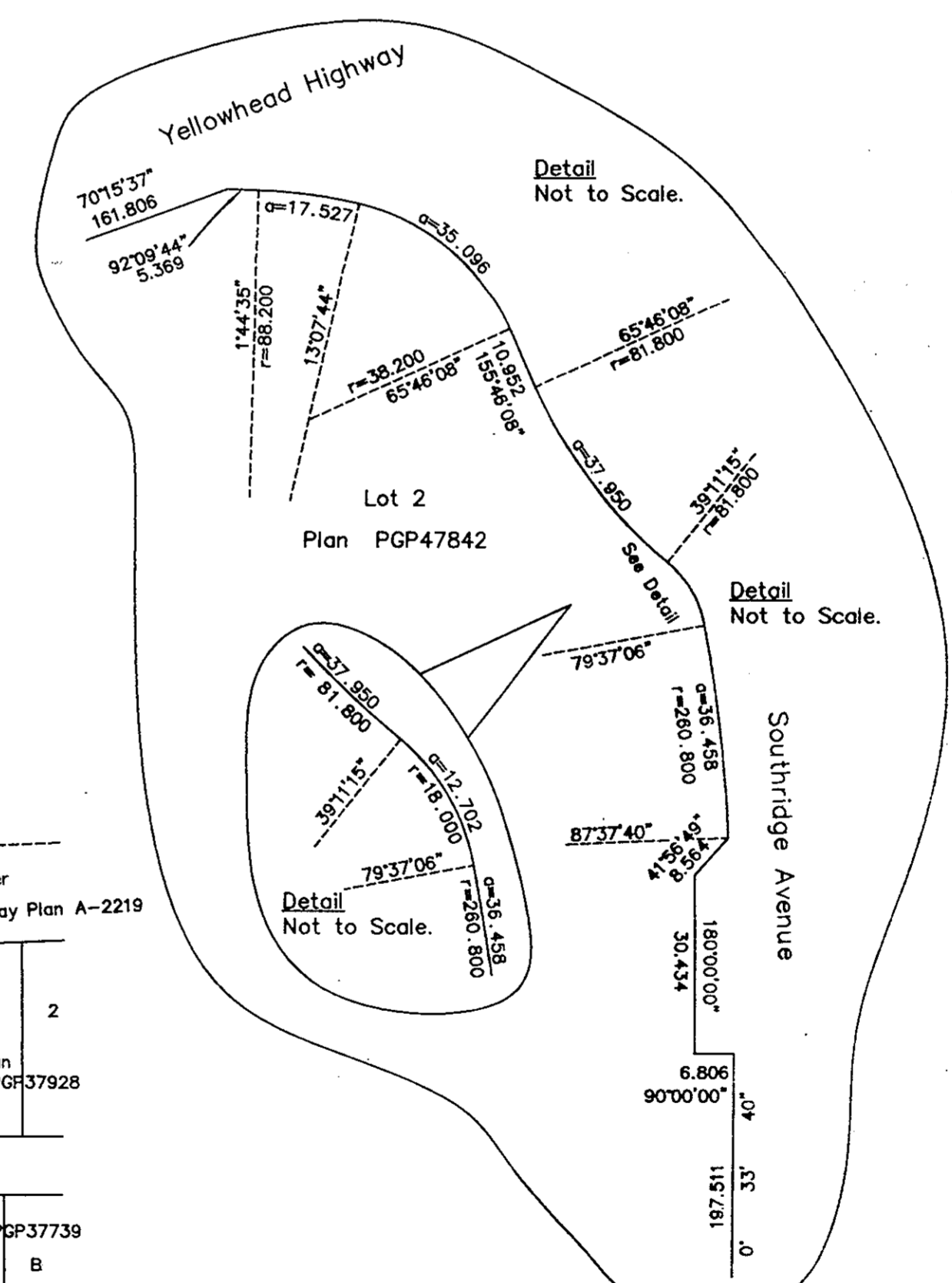
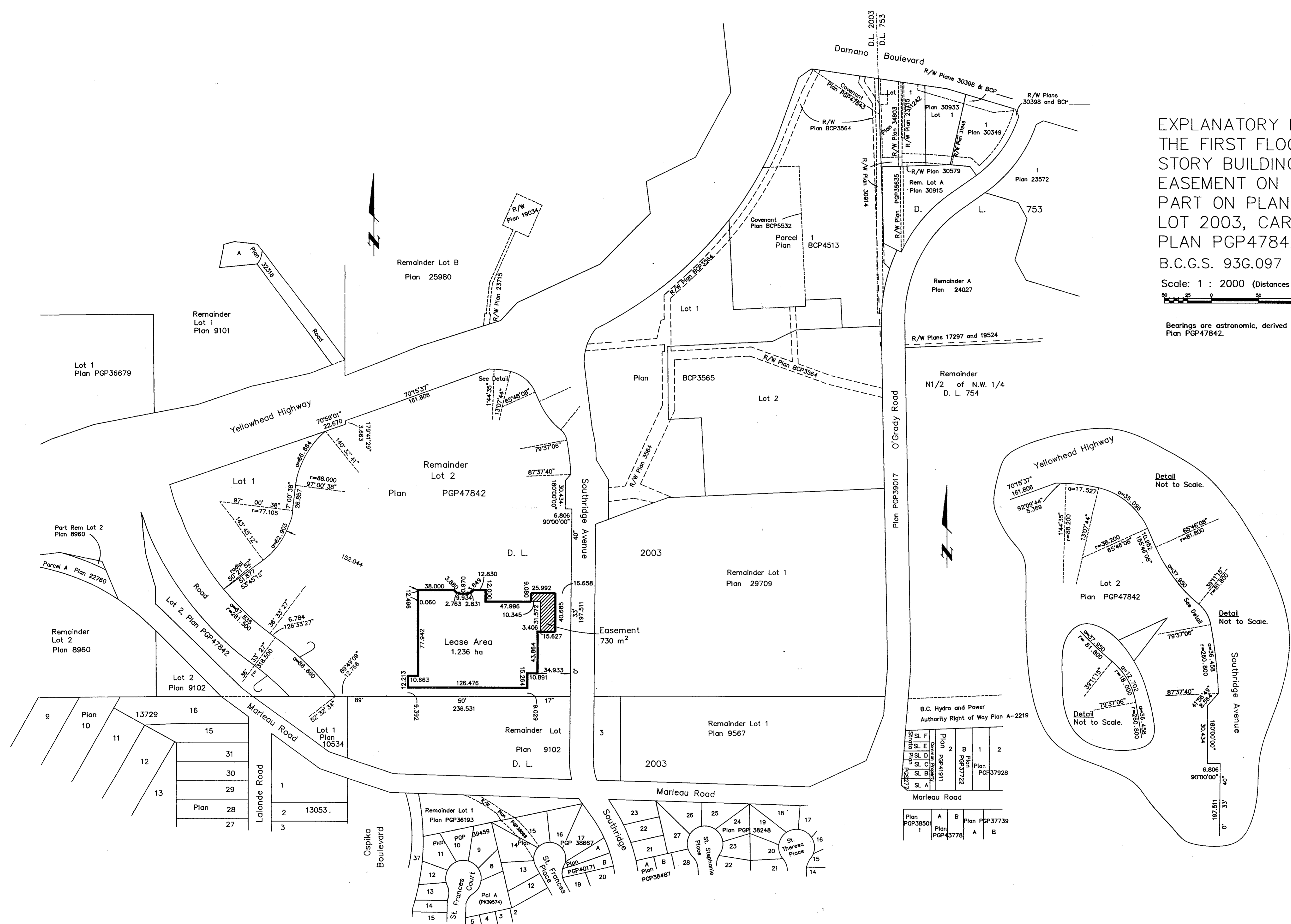
EXPLANATORY PLAN OF LEASE OF THE FIRST FLOOR OF A ONE STORY BUILDING AND ADJACENT EASEMENT ON LOT 2, EXCEPT: PART ON PLAN BCP3565, DISTRICT LOT 2003, CARIBOO DISTRICT, PLAN PGP47842.

B.C.G.S. 93G.097

Scale: 1 : 2000 (Distances are in metres)



Bearings are astronomic, derived from Plan PGP47842.



B.C. Hydro and Power Authority Right of Way Plan A-2219

Street	SL F	Plan	B	1	2
Southridge Avenue	SL E	PGP37722	1	1	2
Marleau Road	SL C	PGP41911	1	1	2
Marleau Road	SL B	PGP37722	1	1	2
Marleau Road	SL A	PGP37722	1	1	2

Plan	A	B	Plan	PGP37739
PGP38501	1	Plan	PGP43778	A B

Certified Correct, according to Land Title Office Records.
 This 19 day of November, 2003.
 The plan was completed and checked, and the checklist filed under #14011, on the 16 day of April, 2004.

Gordon Kilbride
 Gordon Kilbride, B.C.L.S.

This plan lies within the Fraser-Fort George Regional District.

KILBRIDE LAND SURVEYING LTD.
 British Columbia Land Surveyors
 Prince George, B.C.
 Ph: (250) 562-1196 Fax: 562-3656

F.B.- RA	D.L.- 2003	File No. -030219A1
----------	------------	--------------------

Original